

Legislative Proposal 2026

Bringing water infrastructure to the Northwest Area



The challenge

Brooklyn Park's northwest area is a high-demand area consisting of 700 acres of land, with transportation access to Highway 169 and Trunk Highway 610. The anticipated development of a BioTech district in the area is expected to bring 10,000 new jobs and 3,000 housing units, a key strategy in addressing historic and current racial disparities in the city.

However, Brooklyn Park's water distribution system cannot meet the area's anticipated capacity and water pressure needs. With the barriers of both Hwy 169 and Hwy 610, extending water into this area adds significant cost to already high costs to provide this vital utility.

The City is currently investing over \$13 million in this area with the construction of a new water tower and 24" water main extension to connect the new water tower and future crossings to the existing city distribution system.

The proposal



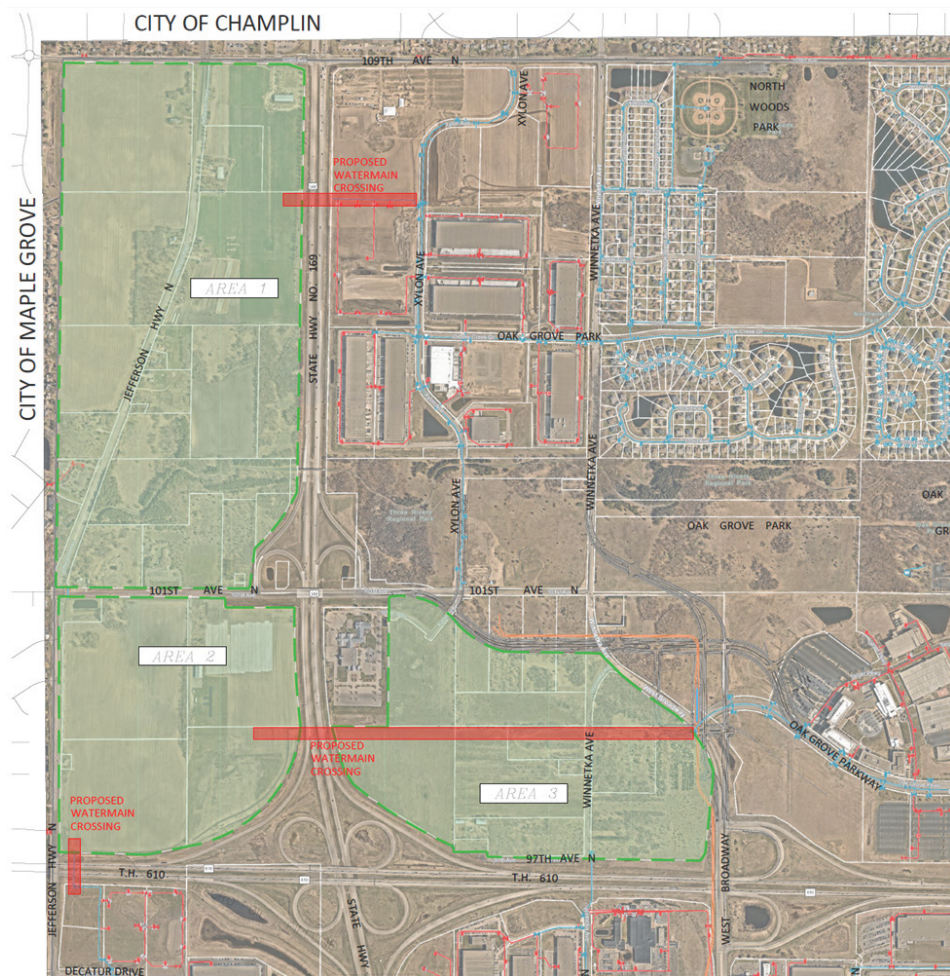
Water main crossings
\$4.5 million

The City is proposing to install three 16-inch water main crossings in the northwest area and connect these distribution lines to provide system resiliency and maximum capacity. Two of the lines would cross Highway 169 north of TH 610 and one line crosses TH 610 just east of Jefferson Highway. This cost includes the cost of trenchless installation of the water mains underneath TH 169 as well as the cost to extend new and existing lines to the crossings on both sides of TH 169, including right-of-way and easement costs, design and construction.

Providing all three crossings is vital to the ultimate need to loop the water main system to provide redundancy and sufficient water pressure.

Why it matters

The City is currently making significant infrastructure investments in this area including more than \$10 million for a water tower to be completed in 2027 and additional trunk water mains to provide water to the entire northwest growth area. This vital water infrastructure will provide the necessary infrastructure to open up the northwest area to development and help the City grow its tax base, improve the regional economy, and keep Brooklyn Park a top choice for residents for years to come.



Marc Culver, Public Works Director

Marc.Culver@brooklynpark.org | (763) 493-8047

Brooklyn Park is BioTech's future.

Brooklyn Park is a member of Minnesota MedTech 3.0 and home to a growing ecosystem of MedTech companies, many of which are members of Medical Alley.

Medical Alley members:

CVRx, Inc., Central Package and Display, Children's Minnesota (Hospitals & Clinics), Diversified Plastics Inc., Fairview Health Services, Medtronic, Olympus Surgical Technologies America, STERIS, and Takeda Pharmaceuticals.

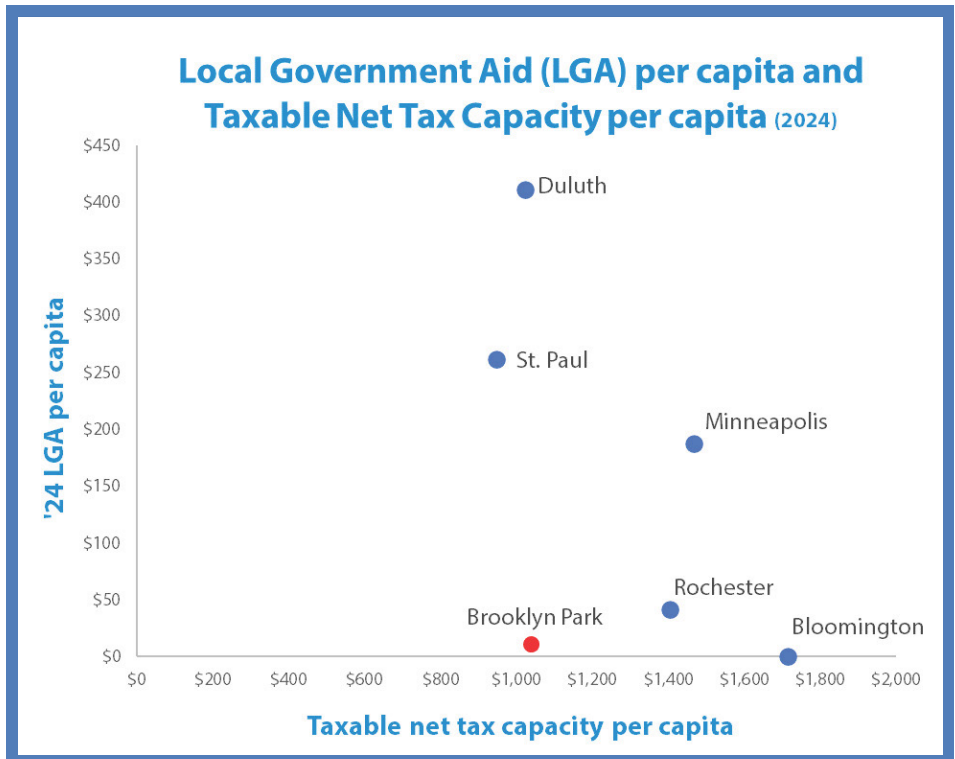


Tax base disparities persist.

Historically, Brooklyn Park has not benefited from significant investment, compared to other similarly sized cities.

This ongoing imbalance and inequity has led to the funding burden for critical regional services falling almost entirely on local residents and businesses.

The right chart reflects per capita investment of LGA funds in several cities. Brooklyn Park has missed critical funding, putting the city at risk of falling further behind economically.



Tim Gladhill, Community Development Director
 Tim.Gladhill@brooklynpark.org | (763) 493-8050