

# Brooklyn Park Park Pages

[www.brooklynpark.org](http://www.brooklynpark.org)

Brooklyn Park Newsletter • November / December 2025



## It's a whole new park!

Thank you to everyone who joined us for the Mississippi Gateway Regional Park grand opening celebration this Fall. More than 3,000 people came to celebrate and discover the incredible new features and enhancements at the park, including exploring the Treetop Trail elevated walkway, splashing in the Mini-Mississippi water play feature, hiking the trails throughout the park and visiting the Gateway Center.

Kids of all ages can climb, slide and explore the Mississippi Playway on the hillside near the Treetop Trail and the play area in the western part of the park, and four-legged friends can romp, run and play in the six-acre dog off-leash area. The Gateway Center offers interpretive exhibits and live animals. It is the ideal hub to explore the park's features or pause with a beverage on the observation deck and enjoy spectacular views of the river.

The Gateway Center offers fishing poles, yard games, hiking poles and nature exploration backpacks to borrow, bikes to rent, and fishing bait to purchase. This winter, cross-country skis and snowshoes will be available to rent. Stop by the Gateway Center's lower level to rent or borrow gear. The Mini-Mississippi water play feature is closed for the season.

### Mississippi Gateway Regional Park

10360 West River Road

**Park hours:** 5AM-10PM Daily

### Gateway Center hours

Monday-Saturday: 9AM-5PM

Sunday: 12-5PM

PSRT STD  
US POSTAGE  
PAID  
PERMIT NO. 481  
TWIN CITIES, MN

## Brooklyn Park City Council

ECRWSS  
Postal Customer



**HOLLIES WINSTON**  
Mayor  
(Elected through 2026)



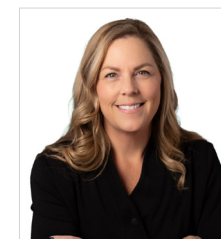
**CHRISTIAN ERIKSEN**  
East District  
(Elected through 2026)



**AMANDA CHENG XIONG**  
East District  
(Elected through 2028)



**NICHOLE KLONOWSKI**  
Central District  
(Elected through 2026)



**SHELLE PAGE**  
Central District  
(Elected through 2028)



**TONY MCGARVEY**  
West District  
(Elected through 2028)



**MARIA TRAN**  
West District  
(Elected through 2026)

  
City of Brooklyn Park  
City Hall  
5200 85th Ave. N.  
Brooklyn Park, MN 55443

### Stay informed!

Watch City Council meetings live, at 6PM on the second and fourth Monday of every month.

Access meeting agendas and the livestream at [www.brooklynpark.org/city-council](http://www.brooklynpark.org/city-council).



[brooklynpark.org/subscribe](http://brooklynpark.org/subscribe)



[brooklynparkmn](https://www.facebook.com/brooklynparkmn)



[cityofbrooklynpark](https://www.instagram.com/cityofbrooklynpark)



[brooklynpark](https://twitter.com/brooklynpark)



[cityofbrooklynpark](https://www.tiktok.com/@cityofbrooklynpark)



[brooklynparkmn](https://www.youtube.com/brooklynparkmn)

For other languages, formats or more accommodations, email [access@brooklynpark.org](mailto:access@brooklynpark.org) or call 763-424-8000.  
Si usted necesita esta información en español llame 763-424-8000.

Yog xav tau kev pab, thov hu rau 763-424-8000 lawv mam li nrhiv ib tus neeg txhais lus rau koj.

# Hmong New Year Celebration

Saturday, December 13, 2025

**Happy Hmong New Year - `Nyob Zoo Xyoo Tshiab!** Each year at the end of the harvest season, the Hmong community comes together to celebrate the fruits of their labor through dance, music, and food. This year is especially special as it marks the 50th year of Hmong refugees living in Minnesota.

Come celebrate the new year at the Brooklyns' Hmong New Year on Saturday, December 13 from 5-9PM. Enjoy performances, music, food, and a resource fair.



## Get your tickets!

Buy tickets starting November 10. Learn more about this event and more at [www.brooklynpark.org/events](http://www.brooklynpark.org/events).

## November events

### HOA Workshop

Saturday, November 8, 6-8PM  
Brooklyn Park City Hall

### Living Well Resource Fair

Friday, November 14, 10AM-11PM  
Community Activity Center

### Civic Engagement Education Series

Thursday, November 20, 5:30-7:30PM  
North Hennepin Community College

## December events

### Community Band Concert

Monday, December 8, 7-8PM  
Community Activity Center

### Health & Resource Fair

Saturday, December 13, 10AM-2PM  
North Hennepin Community College

### Hmong New Year

Saturday, December 13, 5-9PM  
Community Activity Center

### Winter Game Night

Friday, December 19, 5:30-9PM  
Community Activity Center

## Enjoy seasons at the Historic Eidem Farm!



The farm is a welcoming place open year-round, that invites community to get hands-on in nature, connect to the local food system and learn about our shared heritage. The cold weather doesn't stop the fun!

### An Eidem Farm Christmas

This festive all-ages event features carolers, a winter makers market, tours of the historic farmhouse and more!

Sunday, December 7

12:00-3:00PM

### Nature Preschool Day Camp

Campers will get to use all five senses to explore the barnyard, cozy up around the bonfire for story time, build forts and more!

December 29-30

9:00-11:30AM



## Rent a park building or pavilion for your next event!



Brooklyn Park is one of Minnesota's most diverse communities, and our park spaces are designed to welcome it all - from traditional gatherings to vibrant cultural events.

### Options for every occasion

- Park buildings (20 - 50 people): Great for indoor fall and winter get-togethers.
- Picnic pavilions: Sizes range from cozy (20 people) to large (150), for every-thing from family picnics to community celebrations.
- Kitchen access is available at some sites, making it easy to bring your own food!

### Plan ahead

- Reservations for 2026 open in January!
- Choosing your space early means more time to coordinate permits for extras like music, tents, or inflatables.
- Fees are affordable, with reduced rates for residents. Deposits are required at book-ing.

### Reservations are easy

- Learn more and check availability online at [www.brooklynpark.org/parks](http://www.brooklynpark.org/parks).
- Call the Community Activity Center at 763-493-8333 with questions or to book.
- If your plans include music, cultural performances, or special equipment, be sure to ask about permits!



## Native American Heritage Month



November is Native American Heritage Month and offers an opportunity to honor the rich cultures, histories, and ongoing contributions of Indigenous peoples. Brooklyn Park sits on Dakota homelands, and today is home to one of Minnesota largest Native populations, including Dakota and Ojibwe families, and many tribal nations across North America.

This month, commit to learning more about the land we live on, support Native-owned businesses, and attend local events that highlight Native voices and traditions. Learn more from the Minneapolis American Indian Center at [www.maicnet.org](http://www.maicnet.org).



# 2026 proposed tax levy

A preliminary 8% levy increase is being considered by the Brooklyn Park City Council, for a total proposed \$77M tax levy. Residents are invited to provide input to help guide final City Council budget and levy decisions in early December

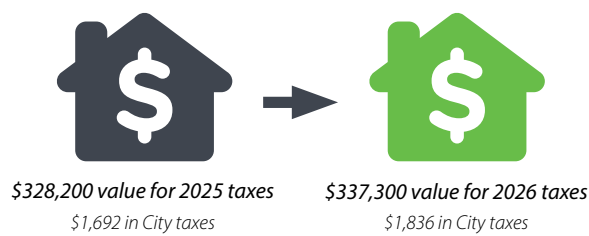
## What is a property tax levy?

A property tax levy is the total amount of money a city needs from property owners to fund services. The Brooklyn Park City Council sets a preliminary levy each September and finalizes it in December.

The preliminary levy is the maximum amount the City can collect, but the final levy can be lowered before adoption.

## Median home values

Median home values have changed over time. Changes in median home value affect how property taxes are distributed across homes.



**Value increase** 2.8%  
**Tax change** \$12 per month

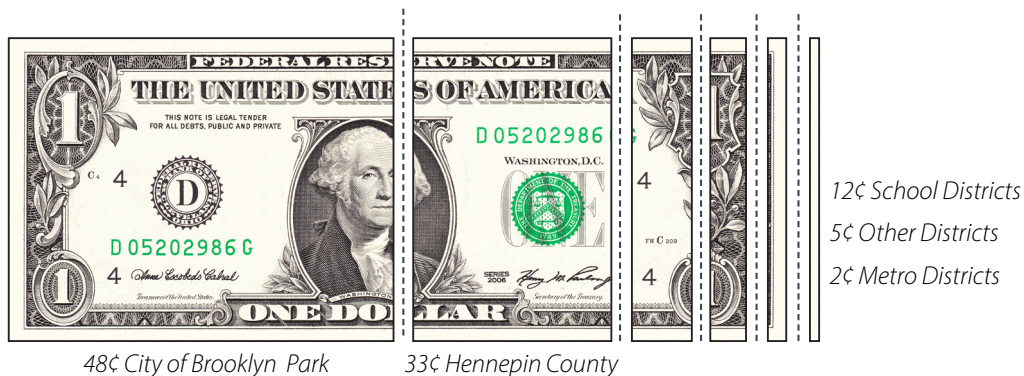
**Note:** Every January 2, properties are valued for taxes that will be paid the next year.

## Where your tax dollars go

### Property taxes

Category	Tax/month
Public Safety <i>(police, fire, and emergency management)</i>	\$79
General Government <i>(administration, finance, human resources, legal, IT, and community development)</i>	\$27
Public Works <i>(street maintenance, snow removal, and utilities)</i>	\$17
Recreation & Parks <i>(parks, trails, recreation centers, and programs)</i>	\$13
Debt Service <i>(pays off bonds to build or improve fire stations, facilities, streets, and other projects)</i>	\$11
Economic Development Authority (EDA) <i>(business growth, job creation, and revitalization of commercial areas)</i>	\$3
Housing and Redevelopment Authority (HRA) <i>(neighborhood reinvestment, affordable housing programs and housing stability)</i>	\$3

For every \$1 you pay in property taxes, about 48 cents goes to City services, City debt and housing and economic initiatives, while 52 cents goes to other taxing jurisdictions. The actual amount you owe depends on your property's assessed value, tax laws, and the levy.



## New constructions and community growth

Brooklyn Park's community has grown over time. As our population grows, the cost of staying current with City services and infrastructure also increases

New construction has been on the rise, with new commercial/industrial, apartments, and residential housing. Between 2018-2025, Brooklyn Park's new construction has seen a total growth value of \$816.7 million

# Upcoming Public Hearing

Comment on the proposed budget and tax levy before its final adoption on December 8, 2025.

**Monday, December 1**  
Beginning 6:00PM  
**Brooklyn Park City Hall**  
5200 85th Ave N

**Can't make it to the hearing in person?  
Give us your feedback by email!**

Contact Brooklyn Park finance at [bpbudget@brooklynpark.org](mailto:bpbudget@brooklynpark.org) before December 8.

# Key additions in 2026



The current Central Fire Station, built in the 1970s, no longer supports the needs of a full-time fire department. To serve our growing community and maintain Brooklyn Park's low emergency response times, especially in the rapidly developing northwest area, a new station is required.

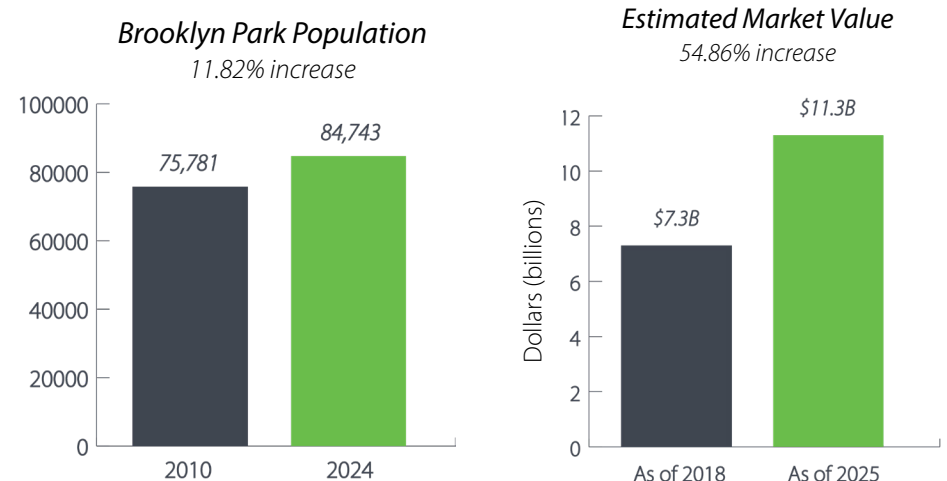


In addition, strategic investments are being made in several other areas, including elections, technology improvements, park projects, firefighter staffing, and wage adjustments. Rising benefit costs and inflation are also factors.

Between 2018-2025, Brooklyn Park's new construction has seen a total value growth of **\$816.7 million.**

## Information sources

- <sup>1</sup> Hennepin County 2025 Assessment Report
- <sup>2</sup> Hennepin County 2025 Final Tax Rate Card
- <sup>3</sup> Metropolitan Council
- <sup>4</sup> Hennepin County New Construction Report
- <sup>5</sup> Metro Counties Property Tax Data



## Become an election judge in 2026!



Ever wondered what it's really like behind the ballot box? In 2026, Brooklyn Park will be recruiting election judges to help Election Day run smoothly and fairly. Judges greet voters, check them in, hand out ballots, and help keep the process organized and accessible.

Watch for details on how to apply! Recruitment begins in early 2026. Learn more and apply online at [www.brooklynpark.org/election-judges](http://www.brooklynpark.org/election-judges).

### What you need to know

- You must be a U.S. citizen and eligible to vote in Minnesota
- Training is required (a 3-hour paid session is provided by the City).
- Full-day or half-day shifts are available during either the primary or general election.
- State law protects your right to take time off work to serve.
- Hiring salary: \$15-16/hour
- Community members who speak additional languages are encouraged to apply!

### Teens can serve as Election Judge Trainees!

High school students ages 16 and 17 can serve as Election Judge Trainees, gaining unique civic experience, earning money, and building skills in communication, teamwork, and responsibility. Parents: this is a hands-on way for your teen to participate in democracy while serving their community.

## Finishing your basement



Planning to create a cozy space or finish bedrooms or bathrooms in your basement? You can do the work on your own or hire a contractor. But remember: You'll need building, mechanical, plumbing, and electrical permits. Detailed drawings are needed when applying for the building permit. The Building division is here to help you along the way! Get in the know at [www.brooklynpark/permits-and-licenses](http://www.brooklynpark/permits-and-licenses) or call 763-488-6379.

**Ready to get your permit?** Submit your permit application online at [www.brooklynpark.geocivix.com/secure](http://www.brooklynpark.geocivix.com/secure).

### Smoke detectors & Carbon Monoxide detectors:

- Smoke alarms are required on all levels of the house and in all sleeping rooms. You will be required to update your home to the current code. (R314)
- Carbon monoxide alarms shall be installed outside and not more than ten feet from each sleeping room on each level of the dwelling containing sleeping rooms. You will be required to update your home to the current code. (R315)

## 2025 Business Forward Forum

The 14th Annual Business Forward Forum is a free, lunch-hour event designed to educate, empower, and connect Brooklyn Park's business community. Local businesses and organizations are invited to network, access city resources, and hear from a panel of speakers over lunch.

**Wednesday, November 19**

10:00AM-1:00PM

**Edinburgh USA Clubhouse**

8700 Edinbrook Crossing  
Brooklyn Park, MN 55443

### Questions?

For more information, visit [www.brooklynpark.org/business-forward-forum](http://www.brooklynpark.org/business-forward-forum)

**Josephine Thao**

Project Facilitator

Josephine.Thao@brooklynpark.org

## Oh deer! Keep the snacks to yourself

Feeding deer may seem harmless, but it can harm both them and our community. Here's why:

- **Health Risks:** Deer sometimes carry diseases that can spread to humans and other animals.
- **Unintended Consequences:** Feeding deer can draw them into more populated areas, where they can cause damage and traffic accidents.
- **Overpopulation:** Artificial feeding disrupts natural population control mechanisms, leading to overpopulation and habitat destruction.

For their safety and ours, please admire deer from a distance and avoid feeding them.

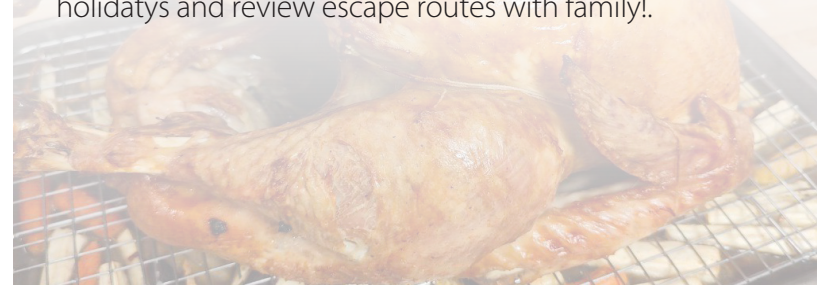
## Holiday safety reminders from Brooklyn Park Fire

The holidays bring gatherings, meals, and decorations, and unfortunately, an increased risk of fire. Please use extra caution when using heat or electricity this season.

Major fire hazards include...

- Incorrectly deep-frying turkeys
- Overloading electrical outlets
- Lighting candles near flammable objects
- Letting holiday trees get too dry

Plus, always remember that every second counts in a fire. Test smoke alarms before guests arrive for the holidays and review escape routes with family!



### Why serve on a commission?

- Give back to your community
- Advise the city council
- Professional development



**No experience necessary—only your commitment to building a vibrant Brooklyn Park!**

## Pumpkin disposal

**After midnight, what does your pumpkin turn into? Turn it into valuable compost!**

Pumpkins can be placed in your backyard compost bin, your yard waste cart, or your organics recycling cart. You can also use the free drop-off container in Central Park across the street from Brooklyn Park's Operations & Maintenance facility between Friday, October 31 and Monday November 10.

Remember to remove all candles, wax, and decorations before you drop off your pumpkins. They'll be transformed into compost to help keep our soil and landscapes healthy!

### Operations and Maintenance

8300 Noble Ave N  
Brooklyn Park, MN 55443

## Don't get towed when it snows!

Remember that on-street parking is not allowed after two or more inches of snow has fallen or when a snow emergency is declared. Vehicles must be off city streets so snow can be cleared, allowing emergency vehicles, school buses, and more to get to their destinations quickly.



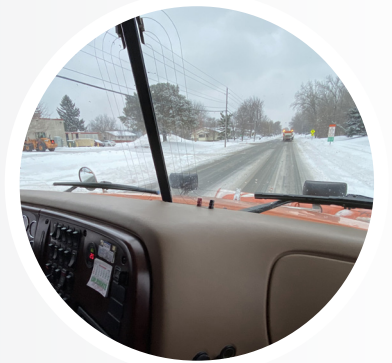
Vehicles left on city streets after a snow emergency is called can get a ticket and be towed to an impound lot. The owner of the vehicle is responsible for all fees associated with snow emergency citation, towing and storing operations.

### How to stay informed

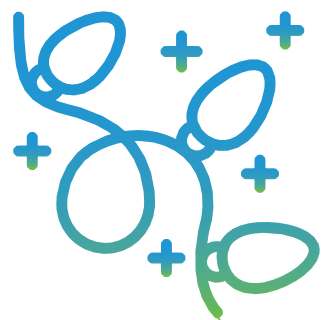
- Sign up for alerts at [www.brooklynpark.org/subscribe](http://www.brooklynpark.org/subscribe).
- Follow us on Facebook and Instagram
- Stay tuned to local TV and radio stations

### Where to park

Residents without access to off-street parking may move their vehicles to an approved snow emergency parking lot for up to 24 hours after a snow emergency is called. Find a list of approved parking lots at [www.brooklynpark.org/snow](http://www.brooklynpark.org/snow).



## Recycle your holiday lights



Don't put lights in your curbside recycling cart! String lights and more can get wrapped around the machinery at the sorting facility, which means workers will have to cut them off by hand and throw them out. Instead, recycle them for FREE.



### Hennepin County Drop-off Facility

8100 Jefferson Highway  
Brooklyn Park, MN 55443

## Last call for leaves!

### Maple Grove Yard Waste Site closes December 1

By law, leaves and other yard waste cannot go in your trash or recycling containers. Drop off leaves, grass, brush, and garden waste for FREE!



### Maple Grove Yard Waste Site

10300 Maple Grove Parkway N.  
Maple Grove, MN 55369



## Free Walk-ups for Recycling

**Concerned about your slippery driveway? Let us grab it for you!**

Winter is coming. That means potentially slippery driveways that could be difficult to traverse for those with mobility concerns. That's why we provide free walk-up service for your cart. Just get your recycling cart outside their garage or by their stoop. The driver will take care of the rest! Garbage companies may offer this service for a fee. Check with your hauler.

### Request your walk-up service

Call 763-493-8006 or email [BPOM@brooklynpark.org](mailto:BPOM@brooklynpark.org) to request a walk-up service for recycling.

## Give to CEAP this holiday season

**Make your donations from November 10 through December 15**

During the upcoming holidays in November and December, the City of Brooklyn Park will be collecting food and toys for the Community Emergency Assistance Programs (CEAP).

Collection barrels will be available for a limited time. Classic holiday meal items are welcomed, such as stuffing mix, canned green beans, creamed soup and gravy. Also, food staples such

as peanut butter, jelly, cereal, crackers, canned soup and veggies, pasta, and baking ingredients. We are also collecting toys and fun gifts for children ages 1-18!

Please donate only new toys, books, and gifts.

### Collection sites

**Community Activity Center**  
5600 85th Ave N

**Brooklyn Park City Hall**  
5200 85th Ave N



## Tales from Tim's Recycling Bin



### Food for thought

Now, is the time of year we cook and consume lots of special foods. For instance, in October my son and I celebrated Chuseok the Korean Thanksgiving with japchae and bibimbap. For Thanksgiving in November my family always asks me to make my mashed sweet potatoes.

I never want to run out of food at a family gathering so I make way more sweet potatoes than needed. Which means lots of leftovers.

Now I love sweet potatoes, but I don't want to be eating them at breakfast, lunch and dinner for the next week. So, I bring extra takeout containers, and I send some home with other family members. And they share their items with me too.

Which brings me to the point of this column. We don't have to create waste. With a little planning we can figure out how to reduce or reuse. Until next time if you have a good thing, reuse it by sharing it with someone else my friends.

## Did you know... college can be affordable for you?

More than 50% of NHCC students receive grants and/or scholarships to help pay for college.

At NHCC, you'll also enjoy:

- Low tuition and fees
- FREE college tuition for eligible students through the North Star Promise Scholarship
- An inclusive campus with academic and well-being resources



**Scan to find out how to make college affordable or free!**



*"Receiving the North Star Promise scholarship was a stress reliever for sure! It is hard to be a student when you feel that financial burden, especially when you want to build a future, but you're scared to build it when you know you're going to have so much debt. North Hennepin and the NSP scholarship helped to take some of that weight off my shoulders."*

– Abbie Chandarath, NSP scholarship recipient

## Because of You: Students Find Opportunity & Success



Because of generous community support for scholarships and academic programs, students like Shaybreanna Braxton are finding opportunity and success at NHCC.

*"Attending North Hennepin Community College has been one of the most meaningful chapters of my life. It has not only helped me grow academically but also personally, professionally, and as a student leader. As a first-generation college student balancing two jobs, health challenges, and family responsibilities, I've found NHCC to be a place of support, growth, and opportunity."*



## On the Edge: Art Quilts Exhibit

*On the Edge: Art Quilts* by Jane Bassuk runs through December 11, 2025, and includes "Blooming" (left) and "Electric" (right). Bassuk used fabric, beads and embroidery thread to create surreal landscapes that use organic shapes derived from the flora and fauna of the natural world. An accomplished artist, Bassuk retired from NHCC after teaching for 23 years.



## Nourish & Flourish Food Drive



Join us on **Give to the Max Day, Thursday, November 20, 10:30 a.m. - 1:00 p.m.** in the Campus Center for our Nourish & Flourish Food Drive for NHCC students. Drop off non-perishable items or scan the QR code to give online.

Most-needed items include ethnic foods (fufu, couscous, palm oil, attieke), grab-and-go snacks (granola bars, fruit cups), and hygiene essentials (toothpaste, shampoo, body wash). While you're there, enjoy wellness activities, a clothing swap, and Holiday Helper opportunities for student families.



## UPCOMING EVENTS

Visit [nhcc.edu](http://nhcc.edu) for more information.

### MUSIC

**Vocal Ensembles Concert** —  
December 5, 7:30 p.m.

**Orchestra Concert** —  
December 8, 7:30 p.m.

**Jazz Ensemble Concert** —  
December 9, 7:30 p.m.

**Concert Band Concert** —  
December 10, 7:30 p.m.

### THEATRE

**"Our Town"** —  
November 19–22, 7:30 p.m.

### ART

**On the Edge: Art Quilts by Jane Bassuk** —  
October 27–December 11

### DEI

**American Indian Heritage Month Speaker** —  
November 6, 10 a.m.