

# **A G E N D A**

If you need this information in another language or format or disability accommodations, email [access@brooklynpark.org](mailto:access@brooklynpark.org) or call 763-293-8000.

Si usted necesita esta información en español: 763-315-8000.

Yog xav tau kev pab, thov hu rau 763-424-8000 lawv mam li nrhiav ib tus neeg txhais lus rau koj.

## **1. CALL TO ORDER/ROLL CALL**

## **2. OPEN FORUM-PUBLIC COMMENT AND RESPONSE**

*Provides an opportunity for the public to address the Commission on items which are not on the agenda. Public Comment will be limited to 15 minutes (if no one is in attendance for Public Comment, the regular meeting may begin), and it may not be used to make personal attacks, to air personality grievances, to make political endorsements or for political campaign purposes. Individuals should limit their comments to three minutes. Commissioners will not enter into a dialogue with citizens. Questions from the Commission will be for clarification only. Public Comment will not be used as a time for problem solving or reacting to the comments made, but rather for hearing the citizen for informational purposes only.*

## **3. APPROVAL OF October 15, 2025 AGENDA**

## **4. APPROVAL OF MINUTES FROM September 17, 2025**

## **5. ACTION ITEMS**

### **5.1 VOTE ON NATIONAL FITNESS CAMPAIGN**

## **6. GENERAL INFORMATION - PRESENTATIONS**

### **6.1 TOUR**

### **6.2 YOUTH SERVICES**

## **7. OLD BUSINESS**

## **8. WRITTEN REPORTS**

### **8.1 PROGRAM AND EVENTS UPDATE**

### **8.2 PARK PROJECTS UPDATE**

### **8.3 DIRECTORS REPORT**

### **8.4 RECENT CITY COUNCIL AGENDA ITEMS**

## **9. DISCUSSION ITEMS**

### **9.1 OPEN FORUM – QUESTION AND ANSWERS**

## **10. VERBAL REPORTS AND ANNOUNCEMENTS**

### **10.1 CITY COUNCIL UPDATE – Councilmember Page**

### **10.2 KEY TOPICS FOR DISCUSSION AT THE NEXT RPAC MEETING**

- NOVEMBER 19
  - BUDGET
- DECEMBER – NO MEETING
- JANUARY 21
  - ELECTIONS
  - WORK PLAN

## **11. KEY DATES FOR FUTURE MEETINGS/EVENTS**

## **12. ADJOURNMENT**

**Wednesday, September 17, 2025**  
**Recreation & Parks Advisory Commission**  
**Minutes**

- 1. CALL TO ORDER/ROLL CALL - The Recreation & Parks Advisory Commission meeting was held at the Community Activity Center Grand Room 1 and was called to order by Chairperson Purcell at 6:01 pm.**

**Commission Members present:**

Judy Purcell Chairperson  
Joshua Uloth Vice-Chair  
Emily Arias, At-large  
Latrina Caldwell, At-large  
Doug Crandall, At-large  
Kyle Krysinski, Central  
Taylor Murray, East  
Terry Parks, At-large  
Kellina Quigley, At-large

**Youth Liaisons:**

Councilmember Page

**Absent:**

Long Dang, East  
Miriam Osammor, East  
Abundance Anako (YL)  
Keesha Ramirez (YL)

**Brooklyn Park Staff present:**

Brad Tullberg, Director of Recreation and Parks  
Jen Gillard, Manager Recreational Programming  
Greg Hoag, Manager Maintenance Park and Facilities  
Jeanine Machan, Administrative Assistant

- 2. OPEN FORUM-PUBLIC COMMENT AND RESPONSE**

N/A

- 3. APPROVAL OF AGENDA**

**A Motion was made to approve the September 17<sup>th</sup>, 2025 agenda by Commissioner Uloth and second by Commissioner Caldwell.**

**Motion unanimously approved.**

- 4. APPROVAL OF MINUTES**

**A Motion was made to Approve August 20<sup>th</sup>, 2025 minutes by Commissioner Caldwell and second by Commissioner Uloth.**

**Motion unanimously approved.**

- 5. ACTION ITEMS**

N/A

- 6. GENERAL INFORMATION - PRESENTATIONS**

**6.1 RECREATION SERVICES DIVISION REPORT**

Chairperson Purcell introduced Jen Gillard, Manager of Recreations Services, who provided a PowerPoint presentation (attached) on the work of the Recreation Services Division.

Comments and Questions

Chairperson Purcell asked if there was an age limit in Aquatics? Manager Gillard stated there was no age limit.

Commissioner Crandall asked what was the percentage of attendees in the Adaptive Recreation and Inclusion Services to the city population? Manager Gillard stated that statistically roughly 10% of the population have some form of disability. For the City of Brooklyn Park that would be 8k people. However, if you compare the Brooklyn Park Recreation program to surrounding cities, several surrounding cities do not have this kind of program.

Vice-Chair Uloth asked about the progress with the programming of the BIPC community? Manager Gillard stated that it is a work in progress. Staff are making progress. When connections are made, staff hear the issues the residents have and work with other organizations to solve those issues. It is hard to engage them in programming when they are dealing with other life issues.

Vice-Chair Uloth asked if rec and parks is a good way to get people comfortable with government? Manager Gillard responded that yes, it is. It is possible that some have not had a good experience in their country of origin. Rec and Parks provides a new perspective of how government is here to serve and help.

Councilmember Paige asked if we offer aqua fitness classes? Manager Gillard stated that because we share the pool with swimming teams, we do not due to the temperature of the water.

Commissioner Crandall asked if there were a lot of adults who do not know how to swim? Manager Gillard stated that there are a number of families that join together.

Commissioner Crandall asked where are the pools that hold the classes? Manager Gillard stated, Jackson Community Middle School and Brooklyn Middle School.

Vice-Chair Uloth asked if the usage fee will be waived at the Howl-O-Ween? Manager Gillard stated yes.

Vice-Chair Uloth noted that River Park Fest was during the Pride weekend. Manager Gillard stated if staff can operate with Three Rivers Park District that will change.

Vice-Chair Uloth asked if there are any thoughts in a dog walking club? Manager Gillard said that was a good thought.

Vice-Chair Uloth asked what the 2026 budget was looking like? Director Tullberg stated that overall the city is not at budget dictated by the City Council.

Vice-Chair Uloth asked if there will be cuts? Direct Tullberg stated that at this time it is not known what or if there will be cuts.

Councilmember Page stated that she has gone to most of the events and compliments the staff for their enthusiasm and professional work.

Director Tullberg thanked Manager Gillard and her staff.

Vice-Chair Uloth commented that promoting of the programs and events needs improvement.

## **7. OLD BUSINESS**

N/A

## **8. WRITTEN REPORTS**

8.1 PROGRAM AND EVENTS UPDATE

8.2 PARK PROJECTS UPDATE

8.3 DIRECTORS REPORT

8.4 RECENT CITY COUNCIL AGENDA ITEMS

Director Tullberg highlighted the Mississippi Gateway Grand Opening that occurred on September 6.

Commissioner Murray commented that it was a great event.

Director Tullberg highlighted a youth member of Zanewood through the divisional partnership of Zanewood and golf course taking lessons and learning golf, has excelled at the sport and has joined the Maple Grove High School golf team.

Director Tullberg provided information on a new project that staff is working on showing a video from the National Fitness Campaign (NFC). Staff completed an application and was awarded \$50,000 towards equipment with the National Fitness Campaign program. The city must match with \$150,000.

Comments/Questions

Chairperson Purcell asked if there are any NFC parks in the Twin Cities? Director Tullberg stated that there are two; one in Columbia Heights and the other is University of Minnesota. Director Tullberg stated that staff

are considering adding it to the Zanewood redevelopment north of the basketball court. He asked for comments.

Admin Machan asked if it needs to be staffed? Director Tullberg stated no.

Commissioner Crandall asked if staff would consider putting it in the new park area in the NW.

Chairperson Purcell stated that she felt at Zanewood would be a good location since even when Zanewood is closed there are still kids in the area.

Vice-Chair Uloth stated that there are people in the city that are unable to afford a gym membership, and this is a good alternative.

Commissioner Crandall

Commissioner Arias stated that she felt it was a great project.

Commissioner Parks asked if there was any upkeep or maintenance. Director Tullberg stated the materials used are conditioned for our area.

Commissioner Quigley asked if Zanewood is an appropriate area if the idea is to also bring in adults?

Commissioner Murray asked if additional parking would be required? Director Tullberg said the existing parking lot should be sufficient since it is intended that people will walk or bike from nearby to use the equipment.

Commissioner Parks asked if it does not go into the space noted at Zanewood, does that become wasted space? Director Tullberg said the space would remain as open green space. The Fitness Court was not originally planned as part of the project.

Several Commissioners asked if there were other parks that this would be a better fit?

Director Tullberg stated that the conversation will continue and possibly bring it up for a vote in the October meeting.

## **9. DISCUSSION ITEMS**

### **9.1 OPEN FORUM – QUESTION AND ANSWERS**

Vice-Chair Uloth stated that he serves on the Blue Line Cultural Displacement Committee. He stated they are considering a significant Ojibwe cultural element in the southern segment of the line. Vice-Chair Uloth wanted to bring this to the attention of staff considering the discussion staff is having about the new Northwest Park. Director Tullberg stated he will look into that and appreciated the heads up from Vice-Chair Uloth.

### **9.2 RPAC REMOTE PARTICIPATION**

Director Tullberg provided background on the policy for City Council and Commission remote participation policy. Director Tullberg reminded the commission that Grand Room 1, where we currently meet, is not set up for remote meetings. Staff are asking for discussion by Commissioners.

After discussion it was decided to leave the meetings as is.

## **10. VERBAL REPORTS AND ANNOUNCEMENTS**

### **10.1 CITY COUNCIL UPDATE – Councilmember Paige**

Councilmember Paige reported the EDA had presented Biotech innovations to City Council.

### **10.2 KEY TOPICS FOR DISCUSSION AT THE NEXT RPAC MEETING**

- OCTOBER 15 – @ ZANEWOOD
  - TOUR
  - YOUTH SERVICES REPORT

### **10.3 KEY DATES FOR FUTURE MEETINGS/EVENTS**

N/A

## **11. ADJOURNMENT**

**A Motion was made by Commissioner Uloth to close the meeting, second by Commissioner Crandall. Motion unanimously approved.**

**Adjourned by Chairperson Purcell at 7:50 PM**

Submitted respectfully,  
Jeanine Machan  
Secretary

**Attachments:**  
**4.1A 2025 Summer Recreation Update**

# **2025 Summer Recreation Services Report and Fall Preview**

September 17, 2025

Jen Gillard, CTRS  
Recreation Services Manager

# 2025 Program Overview

	0-3	3-5	6-12	13-18	19-55	55+
Adaptive Rec & Inclusion Services						
Adults on the Move						
Adult Sports						
Aquatics						
Summer Camp						
Dance						
Eidem Farm						
Events						
Fitness						
Youth Sports						



**2025  
Seasonal  
Staff  
Training**





# ADAPTIVE RECREATION & INCLUSION SERVICES

## Summer Adaptive Recreation

- 131 participants registered
- 422.5 contact hours

## Summer Inclusion Services

- 107 people with disability related needs registered with 53 receiving inclusion support
- 177 people with allergy/medical needs registered with 33 receiving inclusion support
- 11,582.84 contact hours

## Fall Adaptive Recreation (as of 9/16)

- 43 participants registered
- 206 contact hours

## Fall Inclusion Services (as of 9/16)

- 25 people with disability related needs registered with 5 receiving inclusion support
- 37 people with allergy/medical needs registered with 0 receiving inclusion support

**Highlights:** Twins Fantasy Camp, Camp Fundamentals, new adaptive figure skating class, and Recreation Therapy internship



# ADULTS ON THE MOVE for 50+

## Weekly Social Groups

- 12 weekly social groups at the CAC with 197 enrolled

## Programs, Trips, and Luncheons

- 161 registration over the summer
- 269 registrations this fall so far

## Community Connections and Outreach

- Adults on the Move guide mailed to 860 households quarterly
- Solo Seniors group
- Foot Care Nurse
- African Immigrant Dementia Project at the U of M
- Alzheimer's Association of MN
- Apartment outreach with BP Fire
- Senior Tech Help – now in apartment communities vs only CAC
- Community engagement group through North Memorial
- New: Medicare & Mocktails with Tree of Life Benefits
- Living Well Resource Fair in November

In Person Classes @ Brooklyn Park Activity Center

### Educational Classes with ALZHEIMER'S ASSOCIATION

Minnesota - North Dakota Chapter

Classes held at the Brooklyn Park Community Activity Center, 5600 85th Ave N  
Pre-registration is appreciated, walk-ins are welcome.

#### EMPOWERED CAREGIVERS

These classes are designed to increase caregiver confidence while reducing stress. They offer helpful ways to approach the responsibilities of caring for someone living with dementia using a person-centered approach.

#### Building Foundations of Caregiving

Tuesday | September 16 | 6-7:30 pm | FREE | 144002.71  
This class explores the role of the caregiver and changes they may experience, how to build a support team and ways to manage caregiver stress.

#### Managing Money: A Caregiver's Guide to Finances

Tuesday | October 14 | 6-7 pm | FREE | 144002.72  
If you or someone you know is facing Alzheimer's disease, dementia or another chronic illness, it's never too early to put financial plans in place. Join us to learn tips for managing someone else's finances, how to prepare for future care costs and the benefits of early planning.

#### Supporting Independence

Tuesday | November 18 | 6-7:30 pm | FREE | 144002.73  
This class focuses on helping the person living with dementia participate in daily activities, providing the right amount of support, and balancing safety and independence while managing expectations.

HOW TO REGISTER  
CAC Front Desk 5600 85th Ave N  
763-493-8333  
www.brooklynpark.org/registration

Brooklyn Park Recreation & Parks

If you need this information in another language or format or disability accommodations, email access@brooklynpark.org or call 763-293-8000. Si usted necesita esta información en español: 763-315-8000. Yoj xav' tau kev pab, thov rau rau 763-424-8000 laav mam k'nhav' to lus neeg tshais lus rau koj.

Brooklyn Park Recreation & Parks

## adults on the move

July-Sept. 2025

### Activities and Adventures for Adults!

Recreation programs aren't just for kids! Brooklyn Park offers a wide variety of classes, groups, and activities for adults of all ages. Whether you're looking to stay active, learn a new skill, or meet new people, there's something for everyone!

Take a look at what's inside:

- Trips ..... pg. 2-3
- Opportunities ..... pg. 4
- Brooklyn Park Bulletin ..... pg. 5
- Lifelong Learning ..... pg. 6-9
- Social Groups ..... pg. 10-11
- Adult Fitness ..... pg. 12-13
- Community Resources ..... pg. 14-15

Register today!  
Phone: 763-493-8333  
Online: [www.brooklynpark.org/registration](http://www.brooklynpark.org/registration)  
In Person: Community Activity Center  
5600 85th Ave N, Brooklyn Park, MN 55443

Connect with Us!

Facebook: @BrooklynParkMN @BPRecreationandParks  
Instagram: @CityofBrooklynPark @BPRecreationandParks  
Email: [www.brooklynpark.org/subscribe](mailto:www.brooklynpark.org/subscribe)  
Sign up for a weekly e-mail to stay connected!



Brooklyn Park Recreation & Parks

## Living Well Resource Fair

FRIDAY, NOVEMBER 14 | 10 AM - 1 PM  
COMMUNITY ACTIVITY CENTER  
5600 85th Ave N, Brooklyn Park

Brooklyn Park Recreation & Parks invites community members to attend the annual Living Well Resource Fair. A FREE open house to provide information and resources to support our Age-Friendly community and quality of life at all ages, stages, and abilities!

This event is open to all community members, with exhibitors and speakers tailored to older adults, individuals with disabilities, and caregivers.

- Engage with 45+ local exhibitors offering resources and services for as you age
- Drop into a 15 minute hot-topic speaker to learn about a variety of aging topics
- Enjoy light refreshments
- Enter to win door prizes at many of the exhibitor tables
- Free shuttles are available from the parking lot to the front door of the Community Activity Center

adults on the move

# AQUATICS

## Highlights:

Learn-to-Swim camps with Salvation Army and Excel Academy

Summer Camp field trips

Taught Lifeguarding for Professional Rescuers

Women & Girls Only lessons

Adult Lessons



## Summer Lessons

- 160 classes offered
- 1041 people enrolled
- 5552 hours of lessons

## Fall Lessons

- 100 classes offered between session 1 & 2
- Enrollment open now





## Summer Events:

5/10 Art in the Park	500
5/31 Tater Daze Parade	2,500
5/31 Tater Daze Community Gathering	3,500
6/28 River Park Fest	140
7/11 Summer Splash	300
7/19 Jazz in July	180
7/24 All Abilities Showcase	52
8/1 Brooklyn Park Night Out	canceled
8/2 Sounds of Africa	89
8/21 Back to School Bash	3,000
9/13 Latinofest	200

**Total: 10,461**

### Brooklyn Park Farmers Market

Wednesdays 7/9-10/8  
 Attendance through 9/10: **4,949**

### Highlights:

New events: Art in the Park, River Park Fest, All Abilities Showcase, Game Night, Skate Through the Decades, Winter Trivia

Grant for Metro Transit tokens to Farmers Market for attendees using EBT/SNAP

## Fall Events:

10/10 Howl-o-Ween	10/10
10/24 Ghostly Gala	
10/25 Spooktacular	
TBD Hmong New Year	
12/8 Holiday Concert	
12/19 Winter Trivia	

### Upcoming Winter Events

- Winterfest
- Skate Through the Decades
- Black History Month Showcase
- International Women's Day
- Game Night





## 2024-25 Dance Season:

- 2,003 tickets sold for spring recitals
- 483 enrollments in school year program
- 10,177 contact hours

## Summer 25 Dance

- Return of Parade Troup in the Tater Daze Parade
- Return of Dance Parties
- Intro classes for ages 3-7
- Fall Open House and Shoe Sale

## 2025-26 Dance Season

- Core classes beginning this week
- 435 enrolled so far
- Specialty classes begin in December. Expect an additional 100-150 dancers to enroll for class.
- Launching a new Hip Hop class

## Program Highlights

- Focus on fun, friendship, and footwork
- Inclusive of gender identity and expression
- Body positivity and all abilities welcome





## Adult Fitness

**3,231** class visits from May-August

**430** visits so far in Sept

Day time classes on Mon, Tues, Wed, Fri

Evening classes on Tues and adding Thurs in Jan '26

Indoor Pickleball Oct-April Mon-Fri at the CAC

### Highlight:

Launch of new walking club. Participants added additional dates to meet on their own. Extending the program into fall.

## Adult Athletics

- **14** teams for summer softball
- 12 teams for fall softball
- **Highlight:**
- New summer outdoor pickleball league. **17** enrolled



## Summer Youth Sports

- Gymnastics: **131** enrolled in **815** hours of class
- PC Basketball camp: **120** enrolled in **1,400** hours of class
- Youth sports ages 2-8: **68** enrolled in **268** hours
- **Highlight:** free Sanneh Foundation Camps: **63** enrolled in **630** hours

## Fall Preview

Enrollment is open for fall classes

- Little Tykes, Tiny Tots, & Youth Sports for ages 2-8
- Gymnastics for ages 3-14



**June 16- August 7**  
Mon-Thurs  
Ages 5-12

**Camp CAC**  
**Camp Northwoods**  
**Camp Willowstone**  
8:30am-5pm

**Camp Norwood**  
11:30am-5pm

**Leader in Training (LIT)**  
at Camp CAC  
Mon-Thurs 8:30-11:30am

**Teens Outdoors**  
at Camp CAC  
Mon-Thurs Noon-5pm

**Junior Staff**  
Volunteer program for LIT  
graduates

**Registration:**  
**325** campers enrolled  
**60,225** program hours

- 2025 Highlights:**
- New Water Works all camp event
  - New Teens Inside Outdoors camp partnership with Youth Services
  - Summer meals program through District 279
  - Camp community across 4 sites





## Open Gate Attendance

May 19-Sept 6 : **2,486**

Mon/Wed/Sat 10am-2pm

Thurs 10am-7pm

**Fall Open Gate:** Sat 10am-2pm

## Eidem Farm Event Attendance

5/17 Spring on the Farm: 502

7/10 Community Band Concert: 72

7/25 Happy Hour: 125

7/31 Teddy Bear Band Concert: 150

8/7 Sticks and Tones: 44

8/22 Happy Hour: 172

8/28 Kids Movie: 99

**Total: 1,164**

## Upcoming Events

10/11 Fall on the Farm

12/7 Eidem Farm Christmas



## Program Registrations

**Winter:** Little Farmers, Maple Syruping, Preschool Adventures

94 registrations 158 contact hours

**Spring/Summer:** Little Farmers, Goat Yoga, Bee Basics, Water Color Sketching, Preschool camps

212 registrations 1,953 contact hours

**Fall:** Goat Yoga, Night Owls, Survivalist Series for Homeschool Families, Nature Preschool Camp



## Highlights:

- New partnership with Guerilla Pastures to host bee hives on site and do pollinator education classes
- New partnership with Youth Services staff to host Get Rooted youth gardening program
- Receiving the MN Outdoor Recreation Grant for \$350,000 to support construction of a modern building on-site and create accessible garden beds for older adults and people with disabilities

**Questions?**

**Thanks!**

City of Brooklyn Park RECREATION AND PARKS ADVISORY COMMISSION			
<b>Agenda Item</b>	5.1	<b>Meeting Date:</b>	October 15, 2025
<b>Agenda Section:</b>	Action Items	<b>Presented By:</b>	Brad Tullberg, Recreation & Parks Director
<b>Recreation &amp; Parks Director Proposed Action</b>	Consider National Fitness Campaign Fitness Court Location		

**Overview:**

The National Fitness Campaign (NFC) mission is Build Healthy Communities by working with municipalities, schools, and sponsors across America to plan, design, fund and activate healthy communities and schools of the future. By 2030, the Campaign’s goal is to fund 5,000 free outdoor Fitness Courts® within a 10-minute bike ride of every American.

The NFC Fitness Court is an outdoor gym that allows users to leverage their own body weight to get a complete workout using seven stations in just seven minutes. Created with people aged 14 and over and with all abilities in mind, the workouts are adaptable for all fitness levels, allowing participants to move at their own pace. The Fitness Court and Fitness Court Studio are the two options available. The Fitness Court is a 38’ by 40’ court for fitness equipment only. The Fitness Court Studio is 38’ by 72’, which includes fitness equipment and a separate open space to hold fitness classes.

Blue Cross and Blue Shield of Minnesota and the National Fitness Campaign (NFC) are teaming up to bring 10 outdoor Fitness Courts® to communities across Minnesota. The initiative aims to help improve the overall quality of life through equitable access to outdoor exercise programs in communities throughout the state. National Fitness Campaign provides expertise in building funding, master planning, and community building. Blue Cross and Blue Shield of Minnesota has grant funding available for the City of Brooklyn Park in the amount of \$50,000 to install a Fitness Court. The City would be required to provide the remainder of the funding. The estimated cost breakdown is:

NFC Fitness Court Studio and Services	\$ 205,000
Installation	\$ 36,000
Concrete Slab	\$ 45,000
Blue Cross and Blue Shield Grant	<u>(\$ 50,000)</u>
Total Estimated Project Cost	\$ 236,000

Locations being considered for an outdoor Fitness Court are Zanewood Recreation Center, Central Park and Norwood Park.

**Primary Issues/Alternatives to Consider:**

NA

**Budgetary/Fiscal Issues:**

This project would be funded by the Open Space, Land Acquisition and Development Fund.

**Attachments:**

5.1A 2025 Minnesota NFC Briefing Deck



# NATIONAL FITNESS CAMPAIGN CAMPAIGN BRIEFING





# AMERICA'S LARGEST PUBLIC-PRIVATE WELLNESS PARTNERSHIP

**CELEBRATING 750TH**  
Healthy Community this Year



**NOW FUNDED**  
to welcome 1000 Healthy  
Communities by 2026

**OUR MISSION** : to Build Healthy Communities

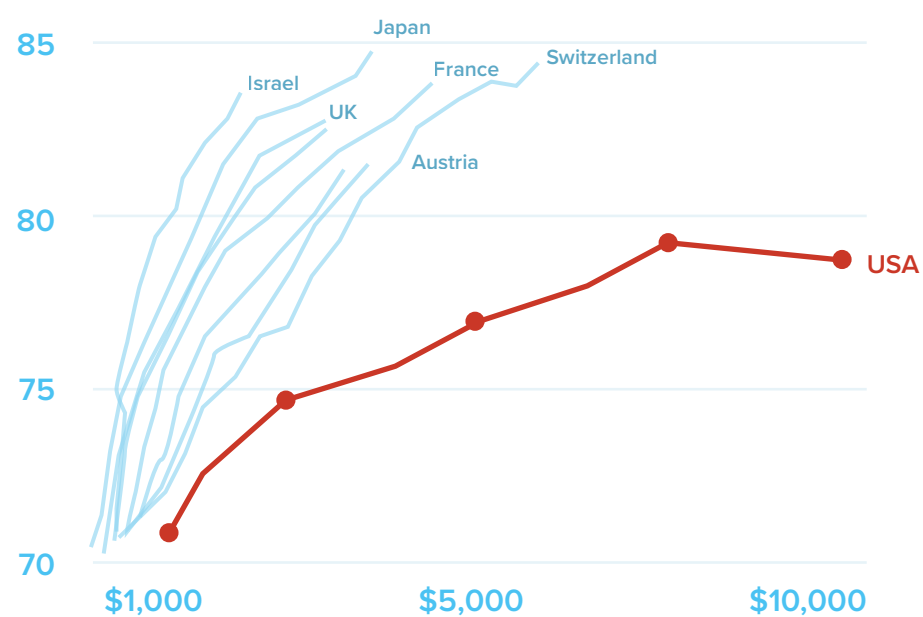


# WHY WE DO IT

**TO MAKE WORLD CLASS FITNESS FREE**



*Life Expectancy vs Health Expenditure*



## **UNDERSTANDING THE PROBLEM**

AMERICA IS FACING A HEALTH CRISIS CAUSED BY SEDENTARY LIFE-STYLES AND CITIES DESIGNED FOR CARS. USA SPENDS MORE MONEY THAN ANY OTHER ON HEALTHCARE WITH POOR RESULTS.



## **BECOMING THE SOLUTION**

WHEN COMMUNITIES ARE DESIGNED TO SUPPORT WELL-BEING, HEALTH OUTCOMES CHANGE!



BROUGHT TO YOU BY





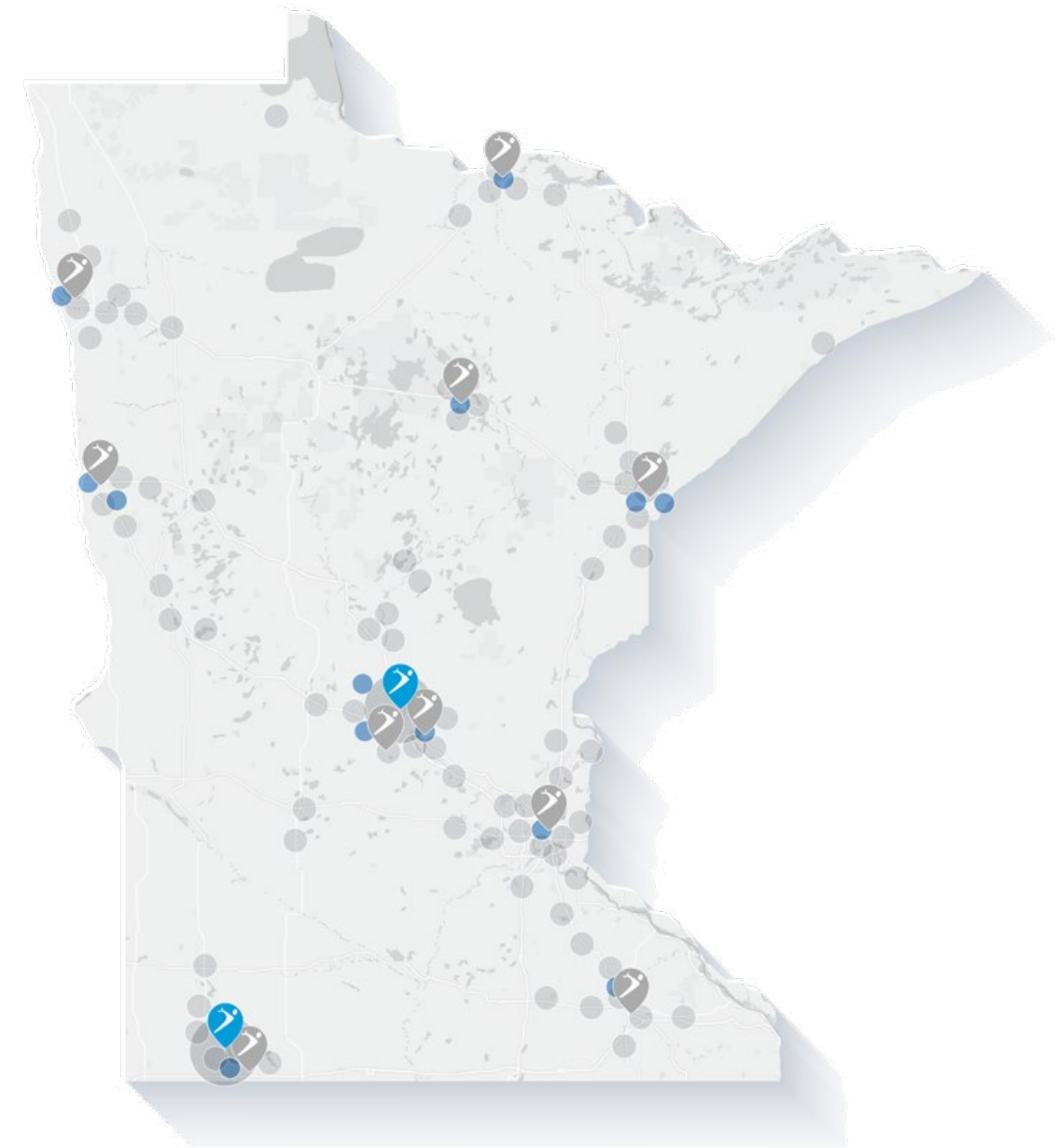
# 2025 MINNESOTA CAMPAIGN

PRESENTED BY



Strategic Plan Adopted for Health Impact Across State

Limited funding for 10 communities in 2025

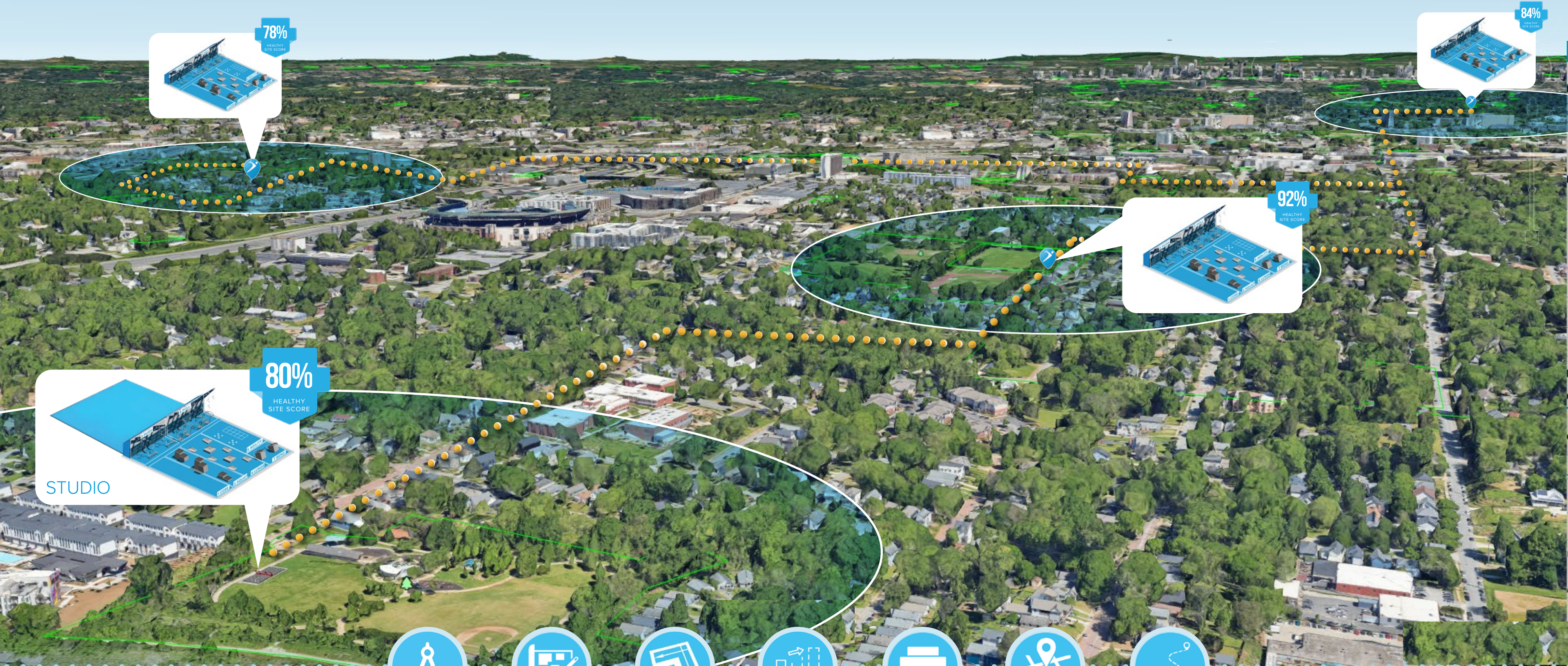


\$500,000 in Funding Now Available  
for Qualified Site Partners



# FITNESS COURT | HEALTHY INFRASTRUCTURE PLANNING

MULTI-SITE FUNDING FOR HEALTH IMPACT



**80%**  
HEALTHY  
SITE SCORE

STUDIO

**BUILDING HEALTHY COMMUNITIES**  
MULTI-SITE PHASING FOR HEALTH IMPACT  
HEALTHY SITE SCORE (HSS)



PLANNING



PHASING



LAYOUTS



PROJECTIONS



SCORES



MAPPING



TRAILS



CAMPAIGN OVERVIEW

# WHAT WE DO

**A COMPREHENSIVE COMMUNITY WELLNESS PROGRAM**

DESIGN & PLANNING

LAUNCH & PRESS

SPONSOR SUPPORT

PUBLIC ART

GRANT FUNDING

AMBASSADOR TRAINING

INSTALLATION

MOBILE APP





# FITNESS COURT

COMMUNITY WELLNESS HUB

STUDIO



**COMMUNITY WELLNESS PROGRAMMING**  
WELCOMES ENTIRE COMMUNITY  
MAYORS WELLNESS SERIES



HIIT



YOGA



ZUMBA



DANCE



STRETCH



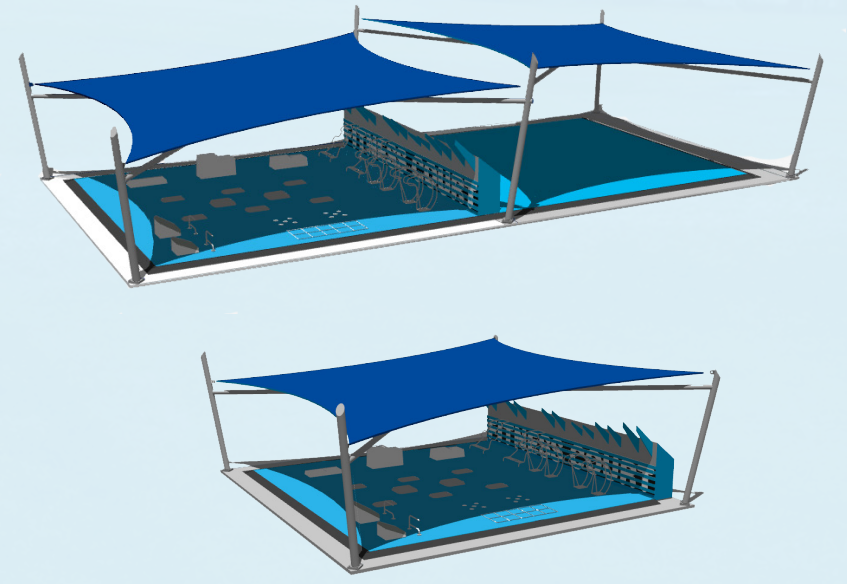
KICKBOXING



TAI-CHI

**NEW FOR 2025**

NOW AVAILABLE FOR  
**FITNESS COURTS &  
FITNESS COURT STUDIOS**



**FITNESS COURT | SHADE**  
WORLDS BEST OUTDOOR GYM JUST GOT COOLER



**EXTENDED  
SEASONAL USE**



**UV & SUN  
PROTECTION**



**INTEGRATED  
DESIGN**



**ENHANCED  
AESTHETICS**



**MADE IN  
USA**

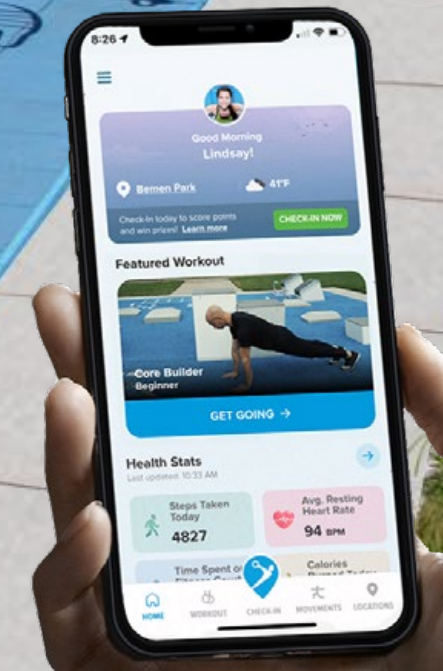


**LONG LASTING  
MATERIALS**



# FITNESS COURT

WORLDS BEST OUTDOOR GYM



**7 MOVEMENT FULL BODY WORKOUT**  
FUNCTIONAL TRAINING SYSTEM  
DIGITALLY ACTIVATED | COACH IN YOUR POCKET



CORE



SQUAT



PUSH



LUNGE



PULL



AGILITY



BEND



# FITNESS COURT | ART

EVERY FITNESS COURT IS A WORK OF ART



**WORK WITH LOCAL ARTISTS**  
NFC DESIGN STUDIO

**WORLD RENOWN ARTIST GALLERY**  
KEITH HARING | JEAN MICHEL BASQUIAT

# Fitness Court® Custom Art

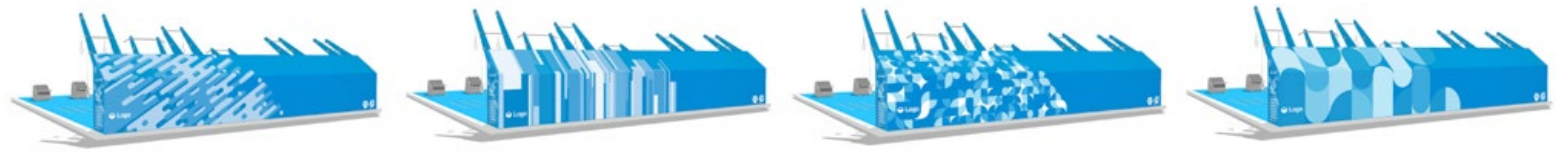


**Local Artist Program**  
Additional Funding Required

EACH FITNESS COURT® IS A ONE-OF-A-KIND WORK OF ART.

## FITNESS COURT® ART

No Additional Funding Required



## NFC CUSTOM ART

Additional Funding Required





**1. BE A PART OF THE NATIONAL FITNESS CAMPAIGN**

AMERICA'S LARGEST PUBLIC PRIVATE WELLNESS PARTNERSHIP

**2. HEALTH BENEFITS**

MORE TIME OUTDOORS, IMPROVED MENTAL & PHYSICAL WELLBEING

**3. HEALTHY INFRASTRUCTURE**

PLACES DESIGNED FOR PEOPLE NOT CARS

**4. BUILDING COMMUNITY**

CREATING A WELLNESS CULTURE THAT IS SOCIAL, CONNECTED AND FUN!

**5. REDUCED HEALTHCARE COSTS**

HEALTHIER, HAPPIER, PEOPLE



# 2025 STATEWIDE CAMPAIGN



NATIONAL FITNESS CAMPAIGN

# 2025

**200 NEW PARTNERS**

WE'RE PLEASED TO ANNOUNCE THE 2025 CAMPAIGN

# NFC Grant Requirements

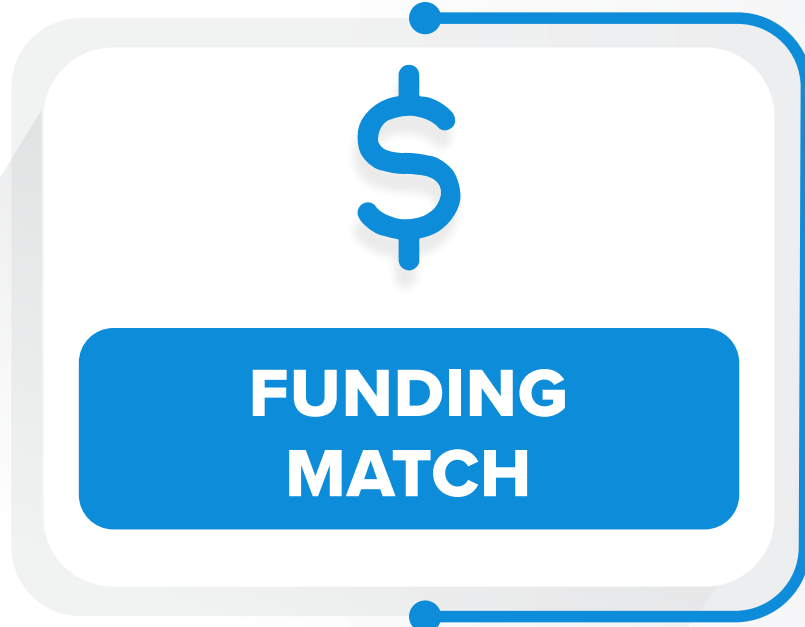
Program Qualification



**STEP 1**



**STEP 2**



**STEP 3**



**STEP 4**

**JOIN THE CAMPAIGN**

A large, light gray rounded rectangle with the text 'JOIN THE CAMPAIGN' in bold, dark gray capital letters.



STEP 1

## LEADERSHIP SUPPORT

BUILD CONSENSUS / CONFIRM FEASIBILITY  
MUNICIPAL LEADER SUPPORT

SHARE 3 MINUTE VIDEO



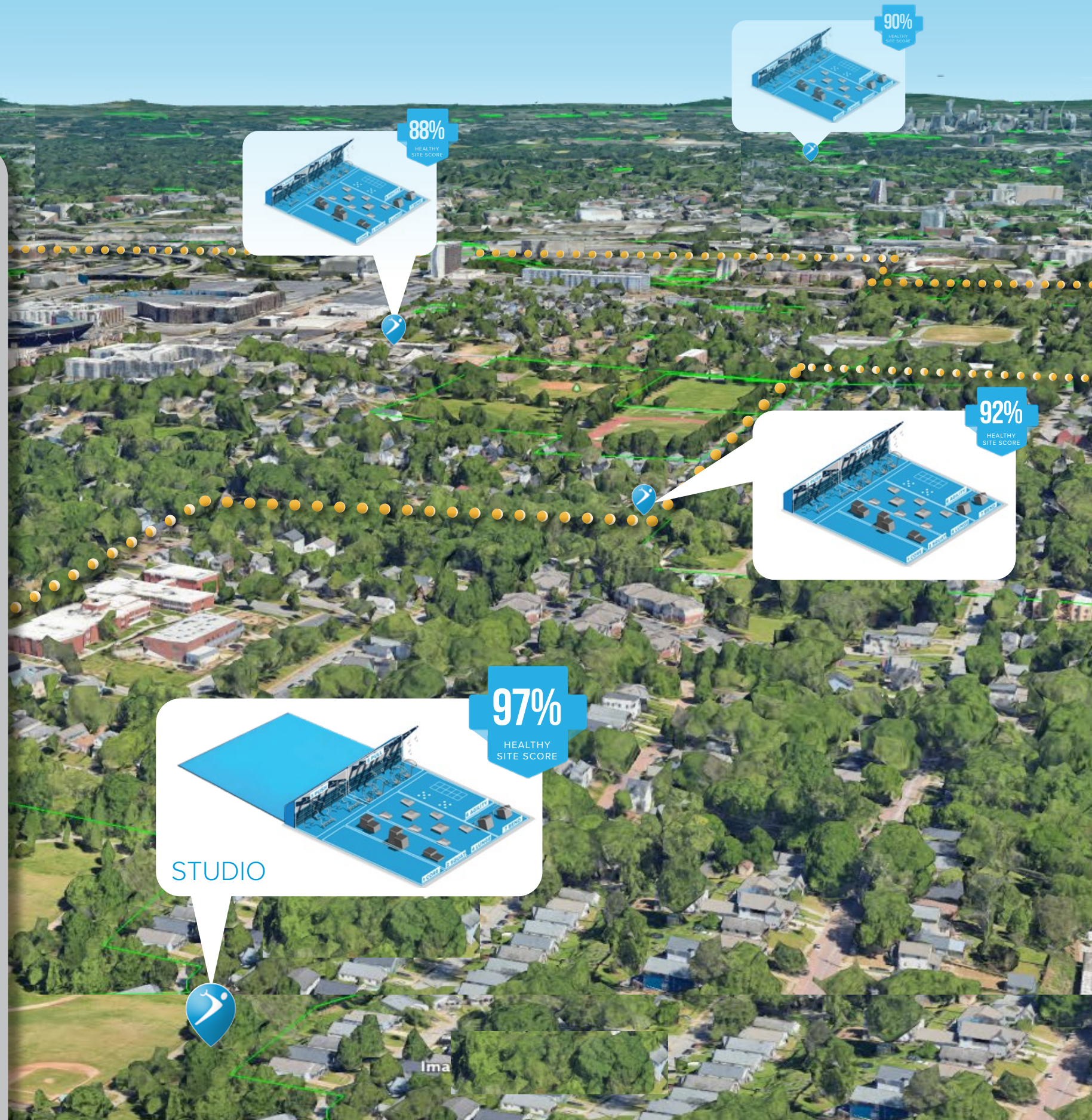


## STEP 2 SITES WITH IMPACT

Supported by NFC's Expert Consulting Services, Identify Site Locations that Meet Criteria for Funding Qualification & Health Impact

**HEALTHY INFRASTRUCTURE PLANNING**  
• VISIBLE • CONNECTED • ACCESSIBLE •

Participate in Virtual Workshop led by NFC Expert Consultants to receive data & qualification information regarding your public spaces. See how your municipality or school benchmarks vs national averages.



POWERED BY



**NFC HEALTHY SITE SCORE**

NATIONAL INDEX & DATASET  
EXPERT CONSULTING FOR  
LOCATING SUCCESSFUL  
OUTDOOR WELLNESS HUBS



STEP 3

## FUNDING MATCH

*NFC GUIDES FUNDING PLAN  
CIP • STATE/NATIONAL • LOCAL SPONSORS*

**GRANT FUNDING AVAILABLE:  
\$30,000-\$60,000 PER SITE**

**PROGRAM FUNDING REQUIREMENT**

**\$150,000-\$260,000**

*PER SITE PENDING PROGRAM CONFIGURATION AND  
INSTALLATION METHOD*





*STEP 4*  
**QUALIFY FOR GRANT**

- A. PRE-APPLICATION PHASE*
- B. GRANT AWARD*
- C. BUILD/SITE PLAN*
- D. LAUNCH LOCAL CAMPAIGN*

---

**SUBMIT GRANT  
APPLICATION**



# JOIN US

LET'S BUILD HEALTHY COMMUNITIES  
**TOGETHER**



**Discussion - Q&A**

# NEXT STEP



**SCHEDULE VIRTUAL SITE  
REVIEW WORKSHOP LED BY  
NFC EXPERT CONSULTANTS TO  
EXPLORE FEASIBILITY**



## **DISCUSSED AT NEXT STEP:**

- 1. *SITE WORKSHOP & HEALTHY SITE SCORE REVIEW***
- 2. *FEASIBILITY & ALIGNMENT WITH LOCAL PRIORITIES***
- 3. *FUNDING REQUIREMENT DETAILS AND GRANT PROGRAM & AVAILABILITY FOR YOUR STATE***
- 4. *NON-BINDING GRANT QUALIFICATION PROCESS***

City of Brooklyn Park RECREATION AND PARKS ADVISORY COMMISSION			
<b>Agenda Item</b>	6.2	<b>Meeting Date:</b>	October 15, 2025
<b>Agenda Section:</b>	General information - presentations	<b>Presented By:</b>	Pam McBride, Youth Services Manager
<b>Recreation &amp; Parks Director Proposed Action</b>	Youth Services Update		

**Overview:**

Pam McBride, Youth Services Manager, will present an overview of the Youth Services Division body of work and plans for new program offerings in the renovated and expanded Zanewood Recreation Center. This will include an update on the Youth Services framework, Brooklyn Park Youth Outreach Team, and the partnership between the Brooklyn Park Police Department and the Youth Services division.

**Primary Issues/Alternatives to Consider:**

NA

**Budgetary/Fiscal Issues:**

NA

**Attachments:**

POWERPOINT PRESENTATION WILL BE PROVIDED AT MEETING

<b>City of Brooklyn Park Recreation and Parks Advisory Commission</b>			
<b>Agenda Item:</b>	8.1	<b>Meeting Date:</b>	October 15, 2025
<b>Agenda Section:</b>	Written Reports	<b>Presented By:</b>	Pam McBride, Youth Services Manager; Jen Gillard, Recreation Manager
<b>Recreation &amp; Parks Director Proposed Action</b>	Program and Events Update		

October

- 2 Oktoberfest Luncheon & Dance
- 3 Night Owls
- 6 Survivalist Series begins
- 10 Howl-O-Ween
- 10 Zanewood Fall Festival
- 11 Fall on the Farm
- 16 Movie Night – Happy Hour at the Farm
- 16 Apple Orchard Family Day
- 17 Nature Preschool Day Camp
- 24 Reach for Resources: Ghostly Gala
- 25 Spooktacular

November

- 6 Honoring Veteran’s Luncheon
- 14 Living Well Resource Fair

Farm Fall Open Gate Hours Sat 10 am – 2pm

Weekly drop-in activities for adults 50+ at the CAC Monday-Friday

Wednesday 2<sup>nd</sup> & 4<sup>th</sup> monthly Tech Support for Seniors at the CAC

Weekly Fitness classes at the CAC Mon/Tues/Wed/Fri

Weekly drop-in activities for youth and teens at Zanewood Recreation Center Monday-Friday 2-8pm

**Program and Event Updates:**

**Brooklyn Park Youth Outreach Team and Intervention Services**

The Brooklyn Park Youth Outreach Team works M-F from 5:00-9:00 pm each day in the community connecting young people to resources, redirecting negative energy, sharing positive activities, and working in partnership with police to maintain a safe and healthy community.

**Intervention Team** is increasing access to Intervention Services with a form that is accessible through a QR code to providers and people supporting young people. This form is used to connect and provide essential services.



**Young Men's group-** ages 16- 18-year-old, every Wednesday, 4:30- 6:30pm at Zanewood

### **Adult Fitness**

Brooklyn Park walking group and have extended this new FREE program now through Fall – Tentatively even through the month of November. Fall fitness held at the Community Activity Center on Monday, Tuesday, Wednesday, and Friday. Expansion on the horizon as we are near New Year. Our regularly scheduled Tuesday evening Hatha Yoga session will be expanded to begin offering a daytime option on Thursdays beginning in January. This addition will now mean that we're providing fitness instruction to our community 5 days a week.

### **Pickleball**

Indoor pickleball returns to the Community Activity Center in October. *New this year* – The Midweek Paddle open gym series. Wednesday night open play in the Armory gym. This new opportunity was created in attempt to familiarize more of our community with the sport, in a low-stakes, unmonitored environment. Equipment available for use during open play hours. Daytime & Weekend pickleball begins again on October 13, offerings run 8am-2pm daily (M-F) and rotating weekends.

### **Adults on the Move**

The October – December Adults on the Move Guide is available at [www.brooklynpark.org/adults](http://www.brooklynpark.org/adults) The guide features luncheons, trips, lifelong learning opportunities, community programs, fitness classes, resources, and weekly activities. The guide is available online and mailed to about 890 people.

- Lifelong Learning – September was a busy month with well attended presentations that include: Living in Your Home, Thriving in Place took place September 11. The panel presentation was with Comfort Keeps Home Health Care, St Croix Hospice, and TruBlue Home Services.

September 16 kicked off our fall Care Givers series with the Alzheimer's Association of MN.

The Planning Your Move workshop on September 18 featured a local realtor from Keller Williams and Soft Landings Transitions

October 13 we are hosting a Medicare & Mocktails afternoon to learn about the changes in Medicare for the 2026 enrollment

October 20 is the second "Empowered Caregivers" class with the Alzheimer's Association of MN.

Technology Support 1:1 appointments with Senior Community Services continue to fill at the Community Activity Center and the community locations at Saint Therese and Urbana Place.

- Living Well Resource Fair  
Save the Date for the 2025 Living Well Resource Fair taking place on Friday, November 14, 10 am – 1 pm at the Community Activity Center. The event will feature 60+ Exhibitors, Free Immunizations with insurance card, and a Free paper shredding truck. This is a free community open house for older adults, individuals with disabilities, and care givers. Featuring local exhibitors, informative speakers, and valuable resources to support aging and living well.
- Solo Seniors  
A New Solo Seniors peer group has met 5 times, is going strong, making connections, and gaining more members. The residents that attended have several ideas they would like presented for the group and were appreciative that Brooklyn Park is starting a "Solos" group in our community. A growing portion of the 50+ population is composed of "solos." These are individuals who cannot or choose not to rely on family to help them navigate life events and make health decisions. Brooklyn Park is starting a "Solos" group. Group members work with each other to create a personal plan for help, support and friendship. Monthly solos group meetings keep members on track and provide an opportunity to learn about resources, build skills and social connections. The group will meet the 3<sup>rd</sup> Wednesday of the month at the CAC.

- **Trips**  
September 10 a group had a walking tour of the Wabasha Caves and then a Gangster bus tour of St Paul, followed by lunch at Cosetta's. September 24 a full bus attended Grease at the Chanhassen Dinner Theater. October 8, we have a full trip to Winona for the day to tour the MN Marine Art Museum, lunch with bluff views, and a fall cruise on the Mississippi River.
- **Luncheons**  
The 6<sup>th</sup> annual Oktoberfest Luncheon & Dance was hosted Thursday, October 2 at Edinburgh USA. This luncheon is a partnership with Brooklyn Park, Brooklyn Center, Crystal, Golden Valley, New Hope, and Robbinsdale. We had an authentic Oktoberfest lunch menu from Lynde's catering, strolling accordion music by Squeazy Miller and the band Lost in Deutschland. 146 guests attended and the event had 10 community sponsors. Staff received a lot of positive feedback from attendees and sponsors.

Upcoming luncheons are the Honoring Veteran's Luncheon on Thursday, November 6 and the Holiday Luncheon on Thursday, December 11.

- **Weekly Adult Social Groups**  
202 individuals are enrolled in one or more weekly activities. Members have access to 14 activity groups per week. Social activity groups include: several art/craft groups, cribbage, bingo, poker, Mah Jongh, 65 Rummy, 500 Cards, Dominoes, Scrabble, and a Book Club. The yearly fee is an affordable \$16/residents and \$22/non-residents for all programs throughout the year.

## **Events**

Latinofest took place on Saturday, September 13 in partnership with CAPI and Pueblos de Lucha y Esperanza. 200 folks came out to the CAC from 11am – 2pm to enjoy live music, performances, food, and community resources.

Movie Night at Happy Hour at the Farm, originally planned for Friday, September 19 was postponed due to thunderstorms. The event has been rescheduled to Thursday, October 16.

A new event, Howl-O-Ween takes place on Friday, October 10 from 5-7 at the new off-leash dog area at Mississippi Gateway. This event features activities for dogs and their owners. Spooktacular will be at the CAC on October 25 from 2-5pm due to continued construction at Zanewood Recreation Center.

## **Aquatics**

School-year sessions begin again in September with offerings on Saturdays, and Monday/Tuesday evenings. The team looks forward to returning to the Brooklyn Middle School pool after a long summer away. Fall sessions 1 & 2 are now both full and include over 100 unique swim classes. The aquatics team looks forward to September-December swim programs.

## **Adaptive Recreation/ Inclusion Services**

Fall Adaptive Recreation programs kicked off early September with adaptive aquatics on Tuesdays, Adaptive Fitness on Wednesdays, and Beauty Within: Adaptive Art on Thursdays. Reach for Resources contracted programs are taking place at the Community Activity Center. Reach programs include social/ game programs, the annual Ghostly Gala with an expected attendance of 250+, and more. Inclusion Services are being provided in a variety of programs this fall including swimming lessons, youth sports, K5 Fusion, dance, ice skating, and more.

## **Youth Sports**

Lil' Tykes and Tiny Tots fall sessions will begin October 11 at the Community Activity Center.

Pee Wee Youth Sports basketball and soccer will begin the week of October 20.

Tobler Gymnastics Fall programming for Youth ages 3 to 14 at Park Center High School has begun and is on going.

## Adult Sports

Fall Adult Softball league is now in season. We have 12 teams registered and are currently out at Noble Fields on Thursday evenings. Fall tournament takes place on October 9.

Fall Adult Pickleball Ladder League wrapped up on October 2. We have 38 participants. This is an increase of 20, up from 18 in the summer.

## Historic Eidem Farm

The Happy Hour and movie originally scheduled for September 19th was rescheduled due to thunderstorms. The event will instead take place on October 16<sup>th</sup> from 4-8:30 PM, with Legally Blonde playing at dusk.

Fall sessions of Goat Yoga were held on September 24th and 25th, with 15 participants enjoying a relaxing and playful evening with Nigerian Dwarf goats.

The first evening preschool drop-off program, Night Owls, took place on October 4th and welcomed 10 children to the farm who enjoyed a dusk nature walk, bonfire with s'mores, storytelling, and stargazing.

The second annual Survivalist Series kicked off on October 6th, welcoming 31 participants in the morning session and 28 in the afternoon. Participants learned how to build sturdy, weather-resistant forts, practice knot tying, and whittling. Upcoming sessions will focus on foraging and wildlife tracking.

The Farms annual Fall celebration will take place on October 11, 12-3pm. Fall on the Farm will feature cider from the 1900s cider press, hayrides, baking demos, fall crafts and more!

Fall open gate hours kick off on September 6<sup>th</sup> and offers free exploration, story time, and drop-in activities

- Saturday: 10 am - 2 pm

## Brooklyn Park Dance

Registration for Brooklyn Park Dance in the 2025-26 school year is open and begins on Monday, September 15<sup>th</sup>. Regular classes will run M-Th including ballet, jazz, and tap dance for age 3-older adults. Specialty classes are offered in lyrical ballet, hip hop, VIP (very important partner), and will begin in December. There are currently 389 participants registered.

## Zanewood Programming

Zanewood Recreation Center offers recreation and youth development programs in a safe and positive environment for kids and teens. Zanewood also offers Outreach, community service, and youth mentoring opportunities delivered by committed and competent community partners.

## Zanewood Programs for Grades 6-12 – SOME RETURNING TO ZANEWOOD, SOME STILL AT HAMILTON PARK

**Zanewood Meals program:** Free M-F from 2-5:00pm

**Aura Beauty Class-** Thursdays, 4:00- 6:00pm

**Art Plug,** now featuring Anime Creation- Tuesday & Thursdays 4:00- 6:00pm

**ZW Teen open gym:** Hoop IT UP! Monday & Wednesdays from 6-8pm at Zanewood Recreation Center

**ZW Open Volleyball:** Sundays- 8:30am- noon.

**TKO Drumline:** Practices Tuesday & Thursday 6-8pm; performance schedule varies

**Chess Club-** September 19- December 20 on Friday's 4-6:00

**Convince Us! Debate Club-** Fridays 6:00- 8:00pm

**Young men's Group-**4:00- 6:00pm, Wednesdays

**Young Women's Group-** 4:00- 6:00pm , Fridays

## Young Adult programming

**Young Adult Open gym-**Wednesdays this summer from 8:00- 10:00pm. \$3 BP resident/ \$5 non-resident at Zanewood Recreation Center

## Arts, Wellness & Engagement Programming

Sewing 101 – Ages 16 and up  
Lakeland Park | 6600 Kentucky Avenue N  
Mondays, September 8- October 27  
6pm-8pm  
\$100

Sewing machines and supplies are provided on site. Limited spaces available, early registration is encouraged.

**Citywide Re-beautification Survey-** Give insight in Public Art and classes- Starting in October

**K- 5 grade programming**

**Before and After School K-5<sup>th</sup> grade Fusion programming**

- Session September 29- December 19
- 3:30- 6:30pm- Afterschool Fusion

**Rec on the Go- restarting in September 29- December 19**

**Ages: K-5**

Rec on the Go is a FREE program that brings recreation opportunities to youth, K–5th grade, all-over Brooklyn Park. Kids must be 5 years old by June 1, 2024 and entering kindergarten to participate.

Activities will include group games, team-building challenges, sports, arts and crafts, and science. Meals and snacks will be provided

**Primary Issues/Alternatives to Consider:** N/A

**Budgetary/Fiscal Issues:** N/A

# City of Brooklyn Park Recreation and Parks Advisory Commission

<b>Agenda Item:</b>	8.2	<b>Meeting Date:</b>	October 15, 2025
<b>Agenda Section:</b>	Written Reports	<b>Presented By:</b>	Marcus Hill, Facilities and Parks Manager Greg Hoag, Parks & Building Maintenance Manager
<b>Recreation &amp; Parks Director Proposed Action</b>	Park Project Updates		

## Overview:

### 1. EAB UPDATE

**Funding Source(s):** Heritage Fund

**Project Update:**

On August 11, 2025 the City Council accepted a \$50,000 grant from Hennepin County to further assist with EAB.

### 2. NATURAL RESOURCE MANAGEMENT

**Funding Source(s):** Park Bond Reinvestment Project & Heritage Fund

**Project Update:** Staff continue reviewing priorities of the Natural Resource Management Plan. A Five-Year Priority Implementation Plan has been developed by working with Stantec. Staff have been working with Great River Greening to develop grant-funded projects at Brookdale Park and River Park.

### 3. COMMUNITY ACTIVITY CENTER IMPROVEMENTS (2026 planning, 2026-2027 construction)

**Funding Source(s):** Park Bond Reinvestment Projects

- **COMMUNITY ACTIVITY CENTER**

**Project Overview:** The plan is to improve the entrance to the facility, create an accessible customer service desk, update bathrooms, and create a welcoming and inviting community center for all customers.

Staff worked with the JLG/292 Design Group to evaluate the options for creating a multi-court gymnasium. A final concept design was provided to staff and JLG/292 Design Group provided cost estimates in the range of \$20 million for the improvements to the CAC including improved entrances and corridors, relocated office space, improved parking, enhanced outdoor event space and the addition of multi-court gym space. The City of Brooklyn Park was awarded \$5 million in state bonding funds during the 2023 Legislative Session to support the improvements to the Community Activity Center. This language was amended in the 2024 legislative session to remove language about the conversion of rink one.

**Project Update:** City Council approved a Task Force of Brooklyn Park residents to assist with the planning and community engagement for the Community Activity Center Improvements. The Task Force will work with Recreation & Parks Department staff and a consultant to help further develop the concept vision for the addition of a multicourt gymnasium, entrance and corridor improvements, and exterior events space at the CAC. The Task Force will also serve as a community engagement resource to share information about the importance of the project with the community.

The City of Brooklyn Park requested \$9.5M in State Bonding dollars to add a multi-court gymnasium to the existing Community Activity Center that was not included in the 2025 bonding package. Based on City Council directions, staff will pursue State Bonding dollars during the 2026 Legislative Session.

- **SENIOR CENTER (2026 planning, 2027 construction)**

**Project Overview:** This improvement would add dedicated space for senior programming and adult fitness space. Final design and components will be developed when the final location is determined. The Senior Center is being considered with the CAC improvements and Fire Station projects. A new Central Fire station is planned to be constructed on the site of the former Hennepin County Library. The plan is to then remodel the current Central Fire Station into a new space dedicated to fitness and social activities for older adults.

**Project Update:** No New Update

4. **TEEN CENTER (2023-24 planning, 2025 construction)**

**Project Overview:** The Zanewood Recreation Center has been a popular hub for youth services and recreation activities. The programming has outgrown the facility and additional program space is needed. Staff will work with the design consultant (Design by Melo) to develop plans to renovate the existing space for K-5 programming and create new space in the form of an addition for teen and young adult programming.

**Project Update:**

Renovations of the existing building are nearly complete! We have installed new flooring, new paint, new furniture, new signage, added a staff breakroom, and renovated our kitchen with new panels. We started programming in the renovation space at the end of September. The new building has made significant progress since the school year started. If you look at the attached pictures, you will see the building has all the steel framing complete and the exterior has been wrapped with sheathing to prepare for the fall/winter weather approaching. Staff were able to walk the space on the first level and the second level recently to look at the spaces. The concrete art garden is complete with the outdoor basketball court, and the parking lot has curbs and sidewalks installed with new light fixtures. We are still on track to potentially open our doors in January of 2026.





## 5. TRAILS, WAYFINDING AND LIGHTING

**Funding Source(s):** Park Bond Reinvestment Projects

**Project Update:** Staff in Recreation & Parks have partnered with Community Development staff to implement the first and second phase of the Trails Wayfinding Plan developed by AVIA Design. The Wayfinding Project will provide signage and direction at key intersections and points of interest along the trails. The project was awarded to SignArt and installation is in progress.

## 6. PLAYGROUND REPLACEMENT

**Funding Source(s):** Heritage Fund

**Project Update:** Staff is planning to replace Lad Park and Park Lawn Park playgrounds in 2025.

## 7. TRAIL REHABILITATION

**Funding Source(s):** Heritage Fund

**Project Update:** All trail rehabilitation projects for 2025 are now complete.

## 8. HISTORIC EIDEM FARM VISITOR CENTER (TDB planning, TBD construction)

**Funding Source(s):** Park Bond Reinvestment Projects

**Project Update:**

Brooklyn Park has been awarded the DNR Outdoor Recreation Grant, staff are in the early planning stages of designing the building. Project is expected to be completed in 2026.

## 2025 COMPLETED PROJECTS

- Mississippi Gateway Regional Park / Environmental Nature Area
- Park Lot Rehabilitation (Edinbrook, Willows of Aspen, Pinebrook and Willowstone)
- Tennis Court Rehabilitation (Bass Creek)
- Trail Rehabilitation (Oxbow Pond, Trinity Gardens)

**Primary Issues/Alternatives to Consider:** N/A

**Budgetary/Fiscal Issues:** N/A

**Attachments:**

CITY OF BROOKLYN PARK RECREATION AND PARKS ADVISORY COMMISSION			
<b>Agenda Item:</b>	8.3	<b>Meeting Date:</b>	October 15, 2025
<b>Agenda Section:</b>	Written Reports	<b>Presented By:</b>	Brad Tullberg, Director of Recreation and Parks
<b>Recreation &amp; Parks Director Proposed Action</b>	Directors Report		

**Overview:**

**1. Budget Update**

City departments have been working on developing budgets for 2026 and 2027. The process started in July and will wrap up in December. Initial discussions with City Council took place on Tuesday September 2<sup>nd</sup> to identify preliminary budget targets for 2026. The City Council set a preliminary maximum property tax levy amount at 8% for 2026. Staff have been working on identifying areas to reduce the budget in order to remain within or further reduce the 8% maximum levy. Director Tullberg will provide a budget overview and update at the November 19 meeting.

**2. Equitable Access Strategic Planning**

The Recreation and Parks team has been working with the Brooklyn Bridge Alliance for Youth staff to develop a strategic plan to increase access to Recreation and Parks programs, events and facilities. The final session was held on October 10<sup>th</sup>. The strategic planning process is a culmination of the work that has been done over the past five years made possible through funding from a Hennepin County Statewide Health Improvement Program grant. Staff plan to share the results of this work at a later RPAC meeting.

**Attachments:**

<b>City of Brooklyn Park RECREATION AND PARKS ADVISORY COMMISSION</b>			
<b>Agenda Item</b>	8.4	<b>Meeting Date:</b>	October 15, 2025
<b>Agenda Section:</b>	Written Reports	<b>Presented By:</b>	Brad Tullberg, Director of Recreation and Parks
<b>Recreation &amp; Parks Director Proposed Action</b>	Recent City Council Agenda Items and Community Engagement		

**Overview:**

- 8.4.1 4.7 Authorize Furniture Purchase for Zanewood Recreation Center – CC 9/22/25
- 8.4.2 4.6 2026 State Bonding Project Support – CC 10/13/25

**Primary Issues/Alternatives to Consider:**

NA

**Budgetary/Fiscal Issues:**

NA

**Attachments:**

- 8.4.1 4.7 Authorize Furniture Purchase for Zanewood Recreation Center
- 8.4.1A 4.7A Authorize Furniture Purchase for Zanewood Recreation Center
- 8.4.1B 4.7B Fluid Interiors Proposal
- 8.4.2 4.6 2026 State Bonding Project Support
- 8.4.2A 4.6A Resolution 2026 State Bonding Project Support
- 8.4.2B 4.6B Northwest Regional Athletic Facility Legislative Fact Sheet
- 8.4.2C 4.6C Water Infrastructure Fact Sheet

# City of Brooklyn Park Request for Council Action

<b>Agenda Item:</b>	4.7	<b>Meeting Date:</b>	September 22, 2025
<b>Agenda Section:</b>	Consent	<b>Originating Department:</b>	Recreation and Parks
<b>Resolution:</b>	X	<b>Prepared By:</b>	Brad Tullberg, Director of Recreation and Parks
<b>Ordinance:</b>	N/A		
<b>Attachments:</b>	2	<b>Presented By:</b>	Brad Tullberg
<b>Item:</b>	Authorize Phase Two Furniture Purchase for Zanewood Recreation Center from Fluid Interiors		

## City Manager's Proposed Action:

MOTION \_\_\_\_\_, SECOND \_\_\_\_\_, TO WAIVE THE READING AND ADOPT RESOLUTION #2025-\_\_\_\_\_ TO AUTHORIZE PHASE TWO FURNITURE PURCHASE FOR ZANEWOOD RECREATION CENTER FROM FLUID INTERIORS IN THE AMOUNT OF \$273,931.18.

## Overview:

On September 23, 2024, the City Council approved the contract for the expansion and renovation of the Zanewood Recreation Center to Donlar Construction not to exceed the amount of \$9,800,000. Through value engineering the final contract with Donlar Construction was reduced to \$9,702,890. The Furniture, Fixtures and Equipment (FF&E) was not part of the construction contract with Donlar. FF&E was planned to be purchased directly by the City of Brooklyn Park to save the cost of sales tax.

Staff worked with the design architect, Design by Melo, and Fluid Interiors to identify furniture available through the Sourcewell and State of Minnesota Cooperative Purchasing Agreements to equip all the new program spaces and offices in the new teen center building. The furniture for the renovated K-5 side of the facility was approved by City Council at the June 23<sup>rd</sup> City Council meeting. The labor for the delivery and installation of the furniture is provided in compliance with the City of Brooklyn Park Prevailing Wage ordinance.

## Primary Issues/Alternatives to Consider:

- Recreation & Parks staff recommend the purchase of the furniture as proposed
- The proposal meets the prevailing wage ordinance requirements for the City of Brooklyn Park

## Budgetary/Fiscal Issues:

- The Furniture, Fixtures and Equipment were included in the \$10M project budget.
- Additional funding from the Best Buy Teen Tech Center grant will cover \$50,000 of the furniture purchase.

## Attachments:

- 4.7A RESOLUTION
- 4.7B FLUID INTERIORS PROPOSAL

RESOLUTION #2025-

RESOLUTION TO AUTHORIZE FURNITURE PURCHASE FOR ZANEWOOD RECREATION CENTER WITH FLUID INTERIORS IN THE AMOUNT OF \$273,931.18.

WHEREAS, On September 23, 2024, the City Council approved the contract for the expansion and renovation of the Zanewood Recreation Center to Donlar Construction not to exceed the amount of \$9,800,000 and through value engineering the final contract amount was reduced to \$9,702,890; and

WHEREAS, the Furniture, Fixtures and Equipment (FF&E) was not part of the construction contract with Donlar but part of the \$10M project budget; and

WHEREAS, staff worked with the design architect, Design by Melo, and Fluid Interiors to identify furniture available through the Sourcewell and State of Minnesota Cooperative Purchasing Agreements to equip all the new program spaces and offices in the new teen center building; and

WHEREAS, the furniture for the renovated K-5 side of the facility was approved by City Council at the June 23<sup>rd</sup> City Council meeting; and

WHEREAS, the labor for the delivery and installation of the furniture is provided in compliance with the City of Brooklyn Park Prevailing Wage ordinance; and

WHEREAS, additional funding from the Best Buy Teen Tech Center grant will cover \$50,000 of the furniture purchase; and

NOW, THEREFORE, BE IT RESOLVED by the City Council of the City of Brooklyn Park to Authorize the Furniture Purchase for Zanewood Recreation Center from Fluid Interiors in the Amount of \$273,931.18.



**Fluid Interiors**  
 100 North 6th Street  
 Suite 100A  
 Minneapolis, MN 55403  
 Phone: 612-746-8700  
 Fax: 612-746-8701  
 Email/Web: www.fluidinteriors.com

8.4.1B 4.7B FLUID INTERIORS PROPOSAL  
**Quotation**

**Project:** 40541  
**Proj Desc:** The Wood  
**Quote:** 40541.004  
**Status:** New

**Sold To:** 6637-00  
 City of Brooklyn Park  
 7100 Zane Ave N  
 Brooklyn Park, MN 55429  
 Attention: Brad Tullberg

**Bill To:** 6637-01  
 City of Brooklyn Park  
 5200 85th Avenue North  
 Brooklyn Park, MN 55443-4300  
 Attention: Accounts Payable

**Ship To:** 6637-00  
 City of Brooklyn Park  
 7100 Zane Ave N  
 Brooklyn Park, MN 55429  
 Attention: Brad Tullberg  
 Email: brad.tullberg@brooklynpark.org

Date Entered	Customer PO	Salesperson	FOB	Terms
09/02/2025		Natasha Fonville	D	Net 15 Days

Line	Loc	Item Number	Description	Order Qty	Unit Price	Extended
1	00	TARIFF - COMMENT	TARIFFS & RELATED SURCHARGES NOT KNOWN OR INCLUDED AT TIME OF PRICING WILL BE INVOICED SEPARATELY.	0	0.00	0.00
2	00	DISCLAIMER - PRODUCT	PLEASE BE AWARE THAT FLUID CANNOT CONTROL MANUFACTURERS ABILITY TO FULFILL ORDERS PER ORIGINAL LEAD TIMES PRODUCTION CAPABILITIES. PLEASE REFER TO THE DELIVERY SECTION OF THE TERMS AND CONDITIONS FOR DISCLAIMERS.	0	0.00	0.00
3	00	DESIGN/SPECIFICATION - FLUID	DESIGN/SPECIFICATION - FLUID	1	5,208.44	5,208.44
4	00	SURCHARGE - FLUID	FLUID LOGISTICS MANAGEMENT	1	1,907.75	1,907.75
5	00	RETAIL DELIVERY FEE	MN ROAD IMPROVEMENT & FOOD DELIVERY FEE - TOTAL TAX INCLUDES \$0.50 FEE	1	0.00	0.00
6	00	UNION LABOR - QUOTED AMOUNT	Union Labor Quoted	1	34,550.25	34,550.25
7	00	1-0273	SURCHARGE	1	6,800.00	6,800.00
8	00	S7H-44-0K	MAARI SLED BASE, POLY SEAT, POLY BACK, NO ARM, FELT GLIDE 111 COMMONS <b>Options:</b> ,TR-RR-RUSTY RED GRD B ,TR-F-BLACK GRD A	27	207.44	5,600.88
9	00	TCRN-2424-LJSNDN4	JIVE,TBL,RD,LAM,24"X24",EB3,STD,CO:NONE,DISC,N,29"H 111 COMMONS <b>Options:</b> ,H-8J-CHARCOAL, GRADE A ,HP-8J-CHARCOAL, GRADE A ,TR-F-BLACK, GRADE A	3	468.88	1,406.64
10	00	TCRN-4848-LJSNDN4	JIVE,TBL,RD,LAM,48"X48",EB3,STD,CO:NONE,DISC,N,29"H 111 COMMONS <b>Options:</b> ,H-8J-CHARCOAL, GRADE A ,HP-8J-CHARCOAL, GRADE A ,TR-F-BLACK, GRADE A	4	642.55	2,570.20
11	00	S7H-44-0H	MAARI SLED BASE, POLY SEAT, POLY BACK, NO ARM, PLASTIC GLIDE 116 FLEX ROOM <b>Options:</b> ,TR-1T-BALSAM GRD A ,TR-PLS-SMOOTH PLASTER GRD A	6	261.37	1,568.22
12	00	TCRT-4284-LJSNDN4	JIVE,TBL,RTRK,LAM,42"X84",EB3,STD,CO:NONE,DISC,N,29"H 116 FLEX ROOM <b>Options:</b> ,H-KM-LANDMARK WOOD GRD B ,HP-KM-LANDMARK WOOD GRD A ,TR-BG-LIGHT BRONZE GRD B	1	1,331.11	1,331.11
13	00	BLAC-2442-TTBR8YR	BE_HOLD,LAT,ATTCH,O/B/F,24DX42W,TFL CSE,TFL FRNT,BLK MTRFOLD DRWR,INST BK,LIN,LK,REG CLSE 207 WS <b>Options:</b> ,G-KM-LANDMARK WOOD, GRADE B ,HP-KM-LANDMARK WOOD, GRADE A ,G-KM-LANDMARK WOOD, GRADE B ,HP-KM-LANDMARK WOOD, GRADE A ,LR-BL-BLACK, GRADE A	4	933.88	3,735.52

**Project:** 40541  
**Proj Desc:** The Wood  
**Quote:** 40541.004  
**Status:** New

**Sold To:** 6637-00  
 City of Brooklyn Park  
 7100 Zane Ave N  
 Brooklyn Park, MN 55429  
 Attention: Brad Tullberg

**Bill To:** 6637-01  
 City of Brooklyn Park  
 5200 85th Avenue North  
 Brooklyn Park, MN 55443-4300  
 Attention: Accounts Payable

**Ship To:** 6637-00  
 City of Brooklyn Park  
 7100 Zane Ave N  
 Brooklyn Park, MN 55429  
 Attention: Brad Tullberg  
 Email: brad.tullberg@brooklynpark.org

Date Entered	Customer PO	Salesperson	FOB	Terms
09/02/2025		Natasha Fonville	D	Net 15 Days

Line	Loc	Item Number	Description	Order Qty	Unit Price	Extended
14	00	BMAL-2442-YYYYS	BE_HOLD, TOP, 3/4" THICK, HPL, 24DX42W, 1MM EDGBD, 1MM EDGBD, 1MM EDGBD, 1MM EDGBD, STD 207 WS Options: ,H-KM-LANDMARK WOOD, GRADE B ,HP-KM-LANDMARK WOOD, GRADE A	4	74.59	298.36
15	00	EUF1-PF0B-21000	CLASSIC POWER MODULE, 3 PORT, 2 RECPT, 1 USB, BLACK, 6 CORD 207 WS	2	129.06	258.12
16	00	EUF1-PF0B-21000	CLASSIC POWER MODULE, 3 PORT, 2 RECPT, 1 USB, BLACK, 6 CORD 207 WS	4	129.06	516.24
17	00	EUFB-0000-SB	CLASSIC POWER MODULE, BRKT, VERTICAL ABOVE WS, BLK 207 WS	2	30.96	61.92
18	00	EUFB-0000-SB	CLASSIC POWER MODULE, BRKT, VERTICAL ABOVE WS, BLK 207 WS	4	30.96	123.84
20	00	SCT-20-7111	VERY TASK CHAIR, FAB SEAT, MESH BK, 4D ARMS, ALUM BSE HD CTRS, BK LK, W/LUM, 207 WS Options: (4H)-BLANKET GRD A ,4H-CC-COCOON GRD A (MS)-VERY TASK MESH GRD A ,MS-F-BLACK GRD A ,TR-F-BLACK GRD A ,TR-F-BLACK GRD A ,TR-F-BLACK GRD A	4	697.38	2,789.52
21	00	STUF-2770-FRNMUC	CMP ECHO, FULL WRAP SCRNS, 27"H X70"W, FAB, RECT, NH, MODESTY, 29/30" D 207 WS Options: (6X_CHEVRON_RR)-{RAILROAD} CHEVRON ,RR-372-{RAILROAD} CHEVRON - RICKRACK (RR), GRADE A ,TR-K-CHARCOAL, GRADE A	2	683.51	1,367.02
22	00	TAWB-0918	BELONG, UNIVERSAL, WIRE MANAGEMENT BASKET, 9"H X 18"W 207 WS	4	81.11	324.44
23	00	TJRA-2970-LJSNCXG	UPSIDE+, TABLE, 29" X 70", LAM, EB3, STD, NO CO, C-LEG, SINGLE STAGE, SIMPLE PADDLE 207 WS Options: ,H-KM-LANDMARK WOOD, GRADE B ,HP-KM-LANDMARK WOOD, GRADE A ,TR-K-CHARCOAL, GRADE A	4	819.33	3,277.32
24	00	TPRA-2466-LJSNAC6F	POPOP, TABLE, RECT, 24IN D, X66IN W, LAM, EDGE BAND, STD CORE, NO CUTOUT, A LEG, CASTER, 36 IN H, FOOTREST 207 WS Options: ,H-KM-LANDMARK WOOD GRD B ,HP-KM-LANDMARK WOOD GRD A ,TR-1E-ACCENT ORANGE GRD B ,TR-1E-ACCENT ORANGE GRD B ,TR-F-BLACK GRD A	3	1,006.47	3,019.41
25	00	VZCC-0072-HG	COMPOSE, TOP TRIM 72IN.W, STL, GLZ PANEL 207 WS	2	49.76	99.52

**Project:** 40541  
**Proj Desc:** The Wood  
**Quote:** 40541.004  
**Status:** New

**Sold To:** 6637-00  
 City of Brooklyn Park  
 7100 Zane Ave N  
 Brooklyn Park, MN 55429  
 Attention: Brad Tullberg

**Bill To:** 6637-01  
 City of Brooklyn Park  
 5200 85th Avenue North  
 Brooklyn Park, MN 55443-4300  
 Attention: Accounts Payable

**Ship To:** 6637-00  
 City of Brooklyn Park  
 7100 Zane Ave N  
 Brooklyn Park, MN 55429  
 Attention: Brad Tullberg  
 Email: brad.tullberg@brooklynpark.org

Date Entered	Customer PO	Salesperson	FOB	Terms
09/02/2025		Natasha Fonville	D	Net 15 Days

Line	Loc	Item Number	Description	Order Qty	Unit Price	Extended
			<b>Options:</b> ,TR-F-BLACK, GRADE A			
26	00	VZCE-0000-H	COMPOSE, EOR, STEEL TRIM, CLIP, PK OF 5 207 WS	1	19.68	19.68
27	00	VZCE-4200-H	COMPOSE,PANEL TRIM,END-OF-RUN 42IN.H, STEEL 207 WS	4	22.13	88.52
			<b>Options:</b> ,TR-F-BLACK, GRADE A			
28	00	VZFF-2672-NNNNNR	COMPOSE, FRM,26HX72W,BS NOPWR,NOBS/NO BSTRM,NO BLT PWR,STD 207 WS	2	178.22	356.44
			<b>Options:</b> ,TR-F-BLACK, GRADE A			
29	00	VZGS-1672-1	COMPOSE,GLASS STACK 16IN.H X 72IN.W 207 WS	2	772.40	1,544.80
			<b>Options:</b> ,TR-F-BLACK, GRADE A (1G_E23)-SATIN ETCH TEMPERED - 3MM ,1G-E23-SATIN ETCH TEMPERED - 3MM, GRADE C			
30	00	VZLL-0000-PSF	COMPOSE, FRAME FOOT,PTD,INLINE 207 WS	4	143.84	575.36
			<b>Options:</b> ,TR-F-BLACK, GRADE A			
31	00	VZTI-2472-FNN	COMPOSE,SINGLE TILE,24IN.HX72IN.W,FABRIC/TACKABLE,STD CORE,NO TECH 207 WS	4	98.74	394.96
			<b>Options:</b> (6X_CHEVRON_RR)-{RAILROAD} CHEVRON ,RR-372-{RAILROAD} CHEVRON - RICKRACK (RR), GRADE A			
32	00	EUE1-PF0B-3100	FTU,1SD,4 PORT,3 RECPT,1 USB,0 DATA PORT,NO CABLE GARAGE,BLK ANOD ALUM,BLK TCH,6 CORD 208 CONFERENCE	1	616.30	616.30
33	00	SCS-24-01E	VERY SIDE ENHANCED,FAB SEAT,PERFORATED BK,ARMLSS,HD CSTS, 208 CONFERENCE	6	314.26	1,885.56
			<b>Options:</b> (3J)-HOBSON GRD A ,3J-3-CANVAS TENT GRD A ,TR-F-BLACK GRD A ,TR-F-BLACK GRD A ,TR-F-BLACK GRD A			
34	00	TS00-6ZJ9	JIVE,TBL,RCTRKHLF,LAM,48 X78 ,EB3,STD,CO:NONE,BRD,GLD,29 H,PTD,SPC 208 CONFERENCE	1	1,105.69	1,105.69
			<b>Options:</b> ,H-KM-LANDMARK WOOD ,HP-KM-LANDMARK WOOD ,TR-F-BLACK			
35	00	SOPN-2252-00H	OPENEST CHICK POUF, RECTANGLE, 52, FABRIC SEAT, FABRIC BASE, PLASTIC GLIDE 210 ART GALLERY	1	1,113.47	1,113.47
			<b>Options:</b> (4H)-BLANKET GRD A ,4H-CF-CAMPFIRE GRD A (3J)-HOBSON GRD A ,3J-9-FIRE PIT GRD A ,NS-RR-RUSTY RED GRD A			
36	00	CDSL-UU	HAWORTH, CARDIGAN LOUNGE 215 ART/FLEX	1	846.35	846.35
			<b>Options:</b> ,HAL-CB03-LIGHT BLUE GRD B			

**Project:** 40541  
**Proj Desc:** The Wood

**Quote:** 40541.004  
**Status:** New

**Sold To:** 6637-00  
 City of Brooklyn Park  
 7100 Zane Ave N  
 Brooklyn Park, MN 55429  
 Attention: Brad Tullberg

**Bill To:** 6637-01  
 City of Brooklyn Park  
 5200 85th Avenue North  
 Brooklyn Park, MN 55443-4300  
 Attention: Accounts Payable

**Ship To:** 6637-00  
 City of Brooklyn Park  
 7100 Zane Ave N  
 Brooklyn Park, MN 55429  
 Attention: Brad Tullberg  
 Email: brad.tullberg@brooklynpark.org

Date Entered	Customer PO	Salesperson	FOB	Terms
09/02/2025		Natasha Fonville	D	Net 15 Days

Line	Loc	Item Number	Description	Order Qty	Unit Price	Extended
37	00	EHPO-PF0M-31	,HAL-CB03-LIGHT BLUE GRD B ,TR-TW0-TEXTURED WHITE GRD A IMMERSE,ELECTRICAL,PLANTER - OBLONG,CORDED,6,3 POWER, 1 USB 215 ART/FLEX <b>Options:</b> ,TR-F-BLACK GRD A	2	1,186.74	2,373.48
38	00	EHPR-PL0M-40	IMMERSE,ELECTRICAL,PLANTER - ROUND,CORDED,12,4 POWER,0 USB 215 ART/FLEX <b>Options:</b> ,TR-F-BLACK GRD A	2	808.19	1,616.38
39	00	S7H-44-0K	MAARI SLED BASE, POLY SEAT, POLY BACK, NO ARM, FELT GLIDE 215 ART/FLEX <b>Options:</b> ,TR-1W-WATER GRD A ,KR-V-CHROME GRD D	18	261.37	4,704.66
40	00	TA01-0225	TABLE, WIRE MNGR RETAINING CLIPS, PLANES (PKG OF 10) 215 ART/FLEX	1	14.38	14.38
41	00	TCRA-3672-LJSNTH4A	JIVE,TBL,RECT,LAM,36"X72",EB3,STD,CO:NONE,T - EXTRUDED,CSTR/FLIP/DIAG NEST,29"H,PTD 215 ART/FLEX <b>Options:</b> ,H-KM-LANDMARK WOOD GRD B ,HP-KM-LANDMARK WOOD GRD A ,TR-F-BLACK GRD A	1	977.35	977.35
42	00	THTD-48D8-LFSPDGAP	IMMERSE,TABLE,SHIFT,RACETRACK/ROUND,48"X96" (L)/60"X60" (U),LAM,KNIFE,STD,CO: 2SD/1SD,29"/36",PTD LEGS 215 ART/FLEX <b>Options:</b> ,H-KM-LANDMARK WOOD GRD B ,HP-KM-LANDMARK WOOD GRD A ,H-KM-LANDMARK WOOD GRD B ,HP-KM-LANDMARK WOOD GRD A ,TR-F-BLACK GRD A ,TR-F-BLACK GRD A	2	4,790.52	9,581.04
43	00	SCS-24-31E	VERY SIDE ENHANCED,FAB SEAT,PERFORATED BK,ARM,HD CSTS, 218 MEETING <b>Options:</b> (3J)-HOBSON GRD A ,3J-10-FREESTYLE GRD A ,TR-F-BLACK GRD A ,TR-F-BLACK GRD A ,TR-F-BLACK GRD A	2	314.26	628.52
44	00	SCS-24-31E	VERY SIDE ENHANCED,FAB SEAT,PERFORATED BK,ARM,HD CSTS, 218 MEETING <b>Options:</b> (3J)-HOBSON GRD A ,3J-3-CANVAS TENT GRD A ,TR-F-BLACK GRD A ,TR-F-BLACK GRD A ,TR-F-BLACK GRD A	2	314.26	628.52
45	00	SCS-24-31E	VERY SIDE ENHANCED,FAB SEAT,PERFORATED BK,ARM,HD CSTS, 218 MEETING <b>Options:</b> (3J)-HOBSON GRD A ,3J-11-IRISH SWIM GRD A	2	314.26	628.52

**Project:** 40541  
**Proj Desc:** The Wood

**Quote:** 40541.004  
**Status:** New

**Sold To:** 6637-00  
 City of Brooklyn Park  
 7100 Zane Ave N  
 Brooklyn Park, MN 55429  
 Attention: Brad Tullberg

**Bill To:** 6637-01  
 City of Brooklyn Park  
 5200 85th Avenue North  
 Brooklyn Park, MN 55443-4300  
 Attention: Accounts Payable

**Ship To:** 6637-00  
 City of Brooklyn Park  
 7100 Zane Ave N  
 Brooklyn Park, MN 55429  
 Attention: Brad Tullberg  
 Email: brad.tullberg@brooklynpark.org

Date Entered	Customer PO	Salesperson	FOB	Terms
09/02/2025		Natasha Fonville	D	Net 15 Days

Line	Loc	Item Number	Description	Order Qty	Unit Price	Extended
46	00	SCS-24-31E	,TR-F-BLACK GRD A ,TR-F-BLACK GRD A ,TR-F-BLACK GRD A VERY SIDE ENHANCED,FAB SEAT,PERFORATED BK,ARM,HD CSTS, 218 MEETING <b>Options:</b> (3J)-HOBSON GRD A ,3J-8-EPIC SWIM GRD A ,TR-F-BLACK GRD A ,TR-F-BLACK GRD A ,TR-F-BLACK GRD A	2	314.26	628.52
47	00	EUEH-0087-3	BELONG,IN-FEED HARNESS 87IN.L, 3 CIR 220 TECH CENTER	2	124.54	249.08
48	00	EUER-153P-GS0S	TRIPLEX RECEPTACLE,15 AMP, 332, CM 220 TECH CENTER <b>Options:</b> ,TR-K-CHARCOAL GRD A	2	79.76	159.52
49	00	SCS-24-31E	VERY SIDE ENHANCED,FAB SEAT,PERFORATED BK,ARM,HD CSTS, 220 TECH CENTER <b>Options:</b> (4J)-MORSE GRD A ,4J-DT-DOT GRD A ,TR-F-BLACK GRD A ,TR-F-BLACK GRD A ,TR-F-BLACK GRD A	12	314.26	3,771.12
50	00	TPRA-2448-LJSNAC7F	POPOP, TABLE,RECT,24IN D.X48IN W,LAM,EDGEBAND,STD CORE,NO CUTOUT,A LEG,CASTER,41 IN H,FOOTREST 220 TECH CENTER <b>Options:</b> ,H-WL-LINEN, GRADE A ,HP-PW-PLY-EDGE, GRADE A ,TR-CTS-CHARTREUSE, GRADE B ,TR-CTS-CHARTREUSE, GRADE B ,TR-F-BLACK, GRADE A	2	891.56	1,783.12
51	00	WBRA-2448-LJSC	INTUITY, WORKSURFACE,BENCHING,RECT,24X48,LAM,EB3,ST D CORE, NO CBLMGT 220 TECH CENTER <b>Options:</b> ,H-KM-LANDMARK WOOD, GRADE B ,HP-KM-LANDMARK WOOD, GRADE A	12	137.32	1,647.84
52	00	ZBRA-4848-ASGHN3TC	INTUITY,BENCHING,UNDERSTRUCT,RECT,48DX48W, ADD-ON,ANGLED,FIXED,STEEL,NO TIE PLATE,3 CIR,TRAY,NO HATCH 220 TECH CENTER <b>Options:</b> ,TR-CTS-CHARTREUSE, GRADE B ,TR-CTS-CHARTREUSE, GRADE B	4	716.83	2,867.32
53	00	ZBRA-4848-SAGHP3TC	INTUITY,BENCHING,UNDERSTRUCT,RECT,48DX48W, STARTER,ANGLED,FIXED,STEEL,TIE PLATE,3 CIR,TRAY,NO HATCH 220 TECH CENTER <b>Options:</b> ,TR-CTS-CHARTREUSE, GRADE B ,TR-CTS-CHARTREUSE, GRADE B ,TR-CTS-CHARTREUSE, GRADE B	2	902.91	1,805.82
54	00	BMAL-2415-YYYYS	BE_HOLD,TOP,3/4" THICK,HPL,24DX15W,1MM EDGBD,1MM EDGBD,1MM EDGBD,1MM EDGBD,STD 221 TECH OFFICE	2	34.15	68.30

**Project:** 40541  
**Proj Desc:** The Wood  
**Quote:** 40541.004  
**Status:** New

**Sold To:** 6637-00  
 City of Brooklyn Park  
 7100 Zane Ave N  
 Brooklyn Park, MN 55429  
 Attention: Brad Tullberg

**Bill To:** 6637-01  
 City of Brooklyn Park  
 5200 85th Avenue North  
 Brooklyn Park, MN 55443-4300  
 Attention: Accounts Payable

**Ship To:** 6637-00  
 City of Brooklyn Park  
 7100 Zane Ave N  
 Brooklyn Park, MN 55429  
 Attention: Brad Tullberg  
 Email: brad.tullberg@brooklynpark.org

Date Entered	Customer PO	Salesperson	FOB	Terms
09/02/2025		Natasha Fonville	D	Net 15 Days

Line	Loc	Item Number	Description	Order Qty	Unit Price	Extended
55	00	BPMA-2415-TTBNFRWNR	<b>Options:</b> ,H-8J-CHARCOAL, GRADE A ,HP-8J-CHARCOAL, GRADE A BE_HOLD,PED,MOB,B/F,24DX15W,TFL CSE,TFL FRNT,BLK MTRFOLD,NO HND,TOP,INST BK,WING,NO LK,REG CLSE 221 TECH OFFICE	2	526.77	1,053.54
56	00	SCS-24-31E	<b>Options:</b> ,G-8J-CHARCOAL GRD A ,HP-8J-CHARCOAL GRD A ,G-8J-CHARCOAL GRD A ,HP-8J-CHARCOAL GRD A ,TR-K-CHARCOAL GRD A VERY SIDE ENHANCED,FAB SEAT,PERFORATED BK,ARM,HD CSTS, 221 TECH OFFICE	2	314.26	628.52
57	00	TCRA-3060-LJSNCH4A	<b>Options:</b> (4J)-MORSE GRD A ,4J-DT-DOT GRD A ,TR-F-BLACK GRD A ,TR-F-BLACK GRD A ,TR-F-BLACK GRD A JIVE,TBL,RECT,LAM,30"X60",EB3,STD,CO:NONE,C - EXTRUDED,CSTR/FLIP/DIAG NEST,29"H,PTD 221 TECH OFFICE	2	890.66	1,781.32
58	00	EUF1-PF0B-21000	<b>Options:</b> ,H-KM-LANDMARK WOOD GRD B ,HP-KM-LANDMARK WOOD GRD A ,TR-K-CHARCOAL GRD A CLASSIC POWER MODULE,3 PORT,2 RECPT,1 USB,BLACK,6 CORD 223 ENGINEER	2	129.06	258.12
59	00	EUFB-0000-SB	CLASSIC POWER MODULE,BRKT,VERTICAL ABOVE WS,BLK 223 ENGINEER	2	30.96	61.92
60	00	SCS-24-31E	VERY SIDE ENHANCED,FAB SEAT,PERFORATED BK,ARM,HD CSTS, 223 ENGINEER <b>Options:</b> (4J)-MORSE GRD A ,4J-DT-DOT GRD A ,TR-F-BLACK GRD A ,TR-F-BLACK GRD A ,TR-F-BLACK GRD A	2	314.26	628.52
61	00	TCRA-2454-LJSNBG4A	<b>Options:</b> ,H-8J-CHARCOAL GRD A ,HP-8J-CHARCOAL GRD A ,TR-K-CHARCOAL GRD A JIVE,TBL,RECT,LAM,24"X54",EB3,STD,CO:NONE,C - RD,GLD,29"H,PTD 223 ENGINEER	2	388.41	776.82
62	00	TCRN-3030-LJSNDN6	<b>Options:</b> ,H-8J-CHARCOAL GRD A ,HP-8J-CHARCOAL GRD A ,TR-K-CHARCOAL GRD A JIVE,TBL,RD,LAM,30"X30",EB3,STD,CO:NONE,DISC,N, 36"H 223 ENGINEER	1	505.95	505.95
63	00	SCS-24-31E	<b>Options:</b> ,H-8J-CHARCOAL GRD A ,HP-8J-CHARCOAL GRD A ,TR-K-CHARCOAL GRD A VERY SIDE ENHANCED,FAB SEAT,PERFORATED BK,ARM,HD CSTS, 226 PODCAST <b>Options:</b> (3J)-HOBSON GRD A	2	314.26	628.52

**Project:** 40541  
**Proj Desc:** The Wood

**Quote:** 40541.004  
**Status:** New

**Sold To:** 6637-00  
 City of Brooklyn Park  
 7100 Zane Ave N  
 Brooklyn Park, MN 55429  
 Attention: Brad Tullberg

**Bill To:** 6637-01  
 City of Brooklyn Park  
 5200 85th Avenue North  
 Brooklyn Park, MN 55443-4300  
 Attention: Accounts Payable

**Ship To:** 6637-00  
 City of Brooklyn Park  
 7100 Zane Ave N  
 Brooklyn Park, MN 55429  
 Attention: Brad Tullberg  
 Email: brad.tullberg@brooklynpark.org

Date Entered	Customer PO	Salesperson	FOB	Terms
09/02/2025		Natasha Fonville	D	Net 15 Days

Line	Loc	Item Number	Description	Order Qty	Unit Price	Extended
64	00	SCS-24-31E	,3J-11-IRISH SWIM GRD A ,TR-F-BLACK GRD A ,TR-F-BLACK GRD A ,TR-F-BLACK GRD A VERY SIDE ENHANCED,FAB SEAT,PERFORATED BK,ARM,HD CSTS, 226 PODCAST <b>Options:</b> (3J)-HOBSON GRD A ,3J-3-CANVAS TENT GRD A ,TR-F-BLACK GRD A ,TR-F-BLACK GRD A ,TR-F-BLACK GRD A	2	314.26	628.52
65	00	SCS-24-31E	,3J-11-IRISH SWIM GRD A ,TR-F-BLACK GRD A ,TR-F-BLACK GRD A ,TR-F-BLACK GRD A VERY SIDE ENHANCED,FAB SEAT,PERFORATED BK,ARM,HD CSTS, 226 PODCAST <b>Options:</b> (3J)-HOBSON GRD A ,3J-10-FREESTYLE GRD A ,TR-F-BLACK GRD A ,TR-F-BLACK GRD A ,TR-F-BLACK GRD A	2	314.26	628.52
66	00	SCS-24-31E	,3J-11-IRISH SWIM GRD A ,TR-F-BLACK GRD A ,TR-F-BLACK GRD A ,TR-F-BLACK GRD A VERY SIDE ENHANCED,FAB SEAT,PERFORATED BK,ARM,HD CSTS, 226 PODCAST <b>Options:</b> (3J)-HOBSON GRD A ,3J-8-EPIC SWIM GRD A ,TR-F-BLACK GRD A ,TR-F-BLACK GRD A ,TR-F-BLACK GRD A	2	314.26	628.52
67	00	S7H-44-0H	MAARI SLED BASE, POLY SEAT, POLY BACK, NO ARM, PLASTIC GLIDE FUSION BREAKROO <b>Options:</b> ,TR-1K-WREN GRD B ,TR-M2-SMOOTH PLASTER MATTE GRD B	1	250.48	250.48
68	00	TCRN-3030-LJSNDN6	JIVE,TBL,RD,LAM,30"X30",EB3,STD,CO:NONE,DISC,N, 36"H FUSION BREAKROO <b>Options:</b> ,H-8J-CHARCOAL, GRADE A ,HP-8J-CHARCOAL, GRADE A ,TR-K-CHARCOAL, GRADE A	1	505.95	505.95
69	00	TCRQ-3030-LJSNDN4	JIVE,TBL,SQ,LAM,30"X30",EB3,STD,CO:NONE,DISC,N, 29"H FUSION BREAKROO <b>Options:</b> ,H-8J-CHARCOAL, GRADE A ,HP-8J-CHARCOAL, GRADE A ,TR-K-CHARCOAL, GRADE A	3	502.20	1,506.60
70	00	TCRN-4848-LJSNDN4	JIVE,TBL,RD,LAM,48"X48",EB3,STD,CO:NONE,DISC,N, 29"H GAME ROOM <b>Options:</b> ,H-8J-CHARCOAL GRD A ,HP-8J-CHARCOAL GRD A ,TR-K-CHARCOAL GRD A	1	642.55	642.55
71	00	SCT-20-7116	VERY TASK CHAIR,FAB SEAT,MESH BK,4D ARMS,PLSTC BSE SFT CTRS,BK LK, W/LUM, LOBBY <b>Options:</b> (4H)-BLANKET GRD A	2	683.65	1,367.30

**Project:** 40541  
**Proj Desc:** The Wood  
  
**Quote:** 40541.004  
**Status:** New

**Sold To:** 6637-00  
 City of Brooklyn Park  
 7100 Zane Ave N  
 Brooklyn Park, MN 55429  
 Attention: Brad Tullberg

**Bill To:** 6637-01  
 City of Brooklyn Park  
 5200 85th Avenue North  
 Brooklyn Park, MN 55443-4300  
 Attention: Accounts Payable

**Ship To:** 6637-00  
 City of Brooklyn Park  
 7100 Zane Ave N  
 Brooklyn Park, MN 55429  
 Attention: Brad Tullberg  
 Email: brad.tullberg@brooklynpark.org

Date Entered	Customer PO	Salesperson	FOB	Terms
09/02/2025		Natasha Fonville	D	Net 15 Days

Line	Loc	Item Number	Description	Order Qty	Unit Price	Extended
72	00	TCRN-3636-LJSNDN4	,4H-CC-COCOON GRD A (MS)-VERY TASK MESH GRD A ,MS-F-BLACK GRD A ,TR-F-BLACK GRD A ,TR-F-BLACK GRD A ,TR-F-BLACK GRD A JIVE,TBL,RD,LAM,36"X36",EB3,STD,CO:NONE,DISC,N, 29"H OPEN LOUNGE A <b>Options:</b> ,H-8J-CHARCOAL GRD A ,HP-8J-CHARCOAL GRD A ,TR-K-CHARCOAL GRD A	4	542.25	2,169.00
73	00	TCRN-3636-LJSNDN4	JIVE,TBL,RD,LAM,36"X36",EB3,STD,CO:NONE,DISC,N, 29"H OPEN LOUNGE B <b>Options:</b> ,H-8J-CHARCOAL GRD A ,HP-8J-CHARCOAL GRD A ,TR-K-CHARCOAL GRD A	3	542.25	1,626.75
74	00	EUF1-PF0B-21000	CLASSIC POWER MODULE,3 PORT,2 RECPT,1 USB,BLACK,6 CORD PO107	1	129.06	129.06
75	00	EUFB-0000-SB	CLASSIC POWER MODULE,BRKT,VERTICAL ABOVE WS,BLK PO107	1	30.96	30.96
76	00	KUAF-XXXX	TACKBOARD,WALL-MOUNTED,UNIVERSAL 30"H X 60" W,VARIABLE SIZE,EXACT PO107 <b>Options:</b> ,RR-372 ,30IN ,60IN	1	286.86	286.86
78	00	S7H-44-0H	MAARI SLED BASE, POLY SEAT, POLY BACK, NO ARM, PLASTIC GLIDE PO107 <b>Options:</b> ,TR-F-BLACK GRD A ,TR-F-BLACK GRD A	2	207.44	414.88
79	00	SCT-20-7115	VERY TASK CHAIR,FAB SEAT,MESH BK,4D ARMS,PLSTC BSE HD CTRS,BK LK, W/LUM, PO107 <b>Options:</b> (4H)-BLANKET GRD A ,4H-CC-COCOON GRD A (MS)-VERY TASK MESH GRD A ,MS-F-BLACK GRD A ,TR-F-BLACK GRD A ,TR-F-BLACK GRD A ,TR-F-BLACK GRD A	1	683.65	683.65
80	00	TA0M-1360-LF	PLANES,MODESTY PANEL,13INX60IN,LAM,FULL PO107 <b>Options:</b> ,H-KM-LANDMARK WOOD GRD B ,HP-KM-LANDMARK WOOD GRD A	1	168.30	168.30
81	00	TAWB-0918	BELONG,UNIVERSAL,WIRE MANAGEMENT BASKET,9"HX18"W PO107	1	81.11	81.11
82	00	TCRN-3030-LJSNDN4	JIVE,TBL,RD,LAM,30"X30",EB3,STD,CO:NONE,DISC,N, 29"H	1	502.20	502.20

**Project:** 40541  
**Proj Desc:** The Wood  
**Quote:** 40541.004  
**Status:** New

**Sold To:** 6637-00  
 City of Brooklyn Park  
 7100 Zane Ave N  
 Brooklyn Park, MN 55429  
 Attention: Brad Tullberg

**Bill To:** 6637-01  
 City of Brooklyn Park  
 5200 85th Avenue North  
 Brooklyn Park, MN 55443-4300  
 Attention: Accounts Payable

**Ship To:** 6637-00  
 City of Brooklyn Park  
 7100 Zane Ave N  
 Brooklyn Park, MN 55429  
 Attention: Brad Tullberg  
 Email: brad.tullberg@brooklynpark.org

Date Entered	Customer PO	Salesperson	FOB	Terms
09/02/2025		Natasha Fonville	D	Net 15 Days

Line	Loc	Item Number	Description	Order Qty	Unit Price	Extended
			PO107 <b>Options:</b> ,H-8J-CHARCOAL, GRADE A ,HP-8J-CHARCOAL, GRADE A ,TR-K-CHARCOAL, GRADE A			
83	00	TJRA-2970-LJSNCXN	UPSIDE, TABLE, 29"X70", LAM, EB3, STD, NO CO, C-LEG, SINGLE STAGE, SIMPLE PADDLE PO107	1	689.17	689.17
			PO107 <b>Options:</b> ,H-KM-LANDMARK WOOD, GRADE B ,HP-KM-LANDMARK WOOD, GRADE A ,TR-K-CHARCOAL, GRADE A			
84	00	ULNL-1760-NSN	MASTERS SERIES, OSU, OPEN, LAM, LTR, 17"HX60"W PO107	1	724.13	724.13
			PO107 <b>Options:</b> ,H-KM-LANDMARK WOOD, GRADE B ,HP-KM-LANDMARK WOOD, GRADE A			
85	00	X5FB-1830-NSBSSYLLN	MASTERS SERIES, LAT FILE, ATTACHED, LAM, B/F, 1.5H, 18DX30W, BLK MITERFOLD, BAR PULL, FIN BK, LK, NO TOE KICK PO107	1	925.57	925.57
			PO107 <b>Options:</b> ,H-KM-LANDMARK WOOD, GRADE B ,HP-KM-LANDMARK WOOD, GRADE A ,TR-K-CHARCOAL, GRADE A ,LR-BL-BLACK, GRADE A			
86	00	X5Y5-1916-BSSNLRN	MASTERS SERIES, WRDROBE, LAM, 5H, 19DX16W, BAR PULL, NO LK, RH, NO TOE KICK PO107	1	599.24	599.24
			PO107 <b>Options:</b> ,H-KM-LANDMARK WOOD, GRADE B ,HP-KM-LANDMARK WOOD, GRADE A ,TR-K-CHARCOAL, GRADE A			
87	00	XLWF-1930-JSNNN	MASTERS SERIES, CREDENZA TOP, LAM, 19"DX30"W, EB3, NO GRAIN, NO GROMMET PO107	1	99.78	99.78
			PO107 <b>Options:</b> ,H-KM-LANDMARK WOOD, GRADE B ,HP-KM-LANDMARK WOOD, GRADE A			
88	00	EUF1-PF0B-21000	CLASSIC POWER MODULE, 3 PORT, 2 RECPT, 1 USB, BLACK, 6 CORD PO108	1	129.06	129.06
89	00	EUFB-0000-SB	CLASSIC POWER MODULE, BRKT, VERTICAL ABOVE WS, BLK PO108	1	30.96	30.96
90	00	S7H-44-0H	MAARI SLED BASE, POLY SEAT, POLY BACK, NO ARM, PLASTIC GLIDE PO108	2	245.04	490.08
			PO108 <b>Options:</b> ,TR-1W-WATER GRD A ,TR-PLS-SMOOTH PLASTER GRD A			
91	00	TAWB-0918	BELONG, UNIVERSAL, WIRE MANAGEMENT BASKET, 9"HX18"W PO108	1	81.11	81.11
92	00	EUF1-PF0B-21000	CLASSIC POWER MODULE, 3 PORT, 2 RECPT, 1 USB, BLACK, 6 CORD PO114	1	129.06	129.06
93	00	EUFB-0000-SB	CLASSIC POWER MODULE, BRKT, VERTICAL ABOVE WS, BLK PO114	1	30.96	30.96

**Project:** 40541  
**Proj Desc:** The Wood

**Quote:** 40541.004  
**Status:** New

**Sold To:** 6637-00  
 City of Brooklyn Park  
 7100 Zane Ave N  
 Brooklyn Park, MN 55429  
 Attention: Brad Tullberg

**Bill To:** 6637-01  
 City of Brooklyn Park  
 5200 85th Avenue North  
 Brooklyn Park, MN 55443-4300  
 Attention: Accounts Payable

**Ship To:** 6637-00  
 City of Brooklyn Park  
 7100 Zane Ave N  
 Brooklyn Park, MN 55429  
 Attention: Brad Tullberg  
 Email: brad.tullberg@brooklynpark.org

Date Entered	Customer PO	Salesperson	FOB	Terms
09/02/2025		Natasha Fonville	D	Net 15 Days

Line	Loc	Item Number	Description	Order Qty	Unit Price	Extended
94	00	KUAF-XXXX	TACKBOARD,WALL-MOUNTED,UNIVERSAL 30"H X 60" W,VARIABLE SIZE,EXACT PO114 <b>Options:</b> ,RR-372 ,30IN ,60IN	1	286.86	286.86
96	00	S7H-44-0H	MAARI SLED BASE, POLY SEAT, POLY BACK, NO ARM, PLASTIC GLIDE PO114 <b>Options:</b> ,TR-1V-INDIGO, GRADE A ,TR-F-BLACK, GRADE A	2	207.44	414.88
97	00	SCT-20-7115	VERY TASK CHAIR,FAB SEAT,MESH BK,4D ARMS,PLSTC BSE HD CTRS,BK LK, W/LUM, PO114 <b>Options:</b> (4H)-BLANKET GRD A ,4H-CC-COCOON GRD A (MS)-VERY TASK MESH GRD A ,MS-F-BLACK GRD A ,TR-F-BLACK GRD A ,TR-F-BLACK GRD A ,TR-F-BLACK GRD A	1	683.65	683.65
98	00	TA0M-1360-LF	PLANES,MODESTY PANEL,13INX60IN,LAM,FULL PO114 <b>Options:</b> ,H-KM-LANDMARK WOOD GRD B ,HP-KM-LANDMARK WOOD GRD A	1	168.30	168.30
99	00	TAWB-0918	BELONG,UNIVERSAL,WIRE MANAGEMENT BASKET,9"HX18"W PO114	1	81.11	81.11
100	00	TCRN-3030-LJSNDN4	JIVE,TBL,RD,LAM,30"X30",EB3,STD,CO:NONE,DISC,N, 29"H PO114 <b>Options:</b> ,H-8J-CHARCOAL, GRADE A ,HP-8J-CHARCOAL, GRADE A ,TR-K-CHARCOAL, GRADE A	1	502.20	502.20
101	00	TJRA-2970-LJSNCXN	UPSIDE,TABLE,29"X70",LAM,EB3,STD,NO CO,C- LEG,SINGLE STAGE, SIMPLE PADDLE PO114 <b>Options:</b> ,H-KM-LANDMARK WOOD, GRADE B ,HP-KM-LANDMARK WOOD, GRADE A ,TR-K-CHARCOAL, GRADE A	1	689.17	689.17
102	00	ULNL-1760-NSN	MASTERS SERIES,OSU,OPEN,LAM,LTR,17"HX60"W PO114 <b>Options:</b> ,H-KM-LANDMARK WOOD, GRADE B ,HP-KM-LANDMARK WOOD, GRADE A	1	724.13	724.13
103	00	X5FB-1830-NSBSSYLLN	MASTERS SERIES,LAT FILE,ATTACHED,LAM,B/F,1.5H,18DX30W,BLK MITERFOLD,BAR PULL,FIN BK,LK,NO TOE KICK PO114 <b>Options:</b> ,H-KM-LANDMARK WOOD, GRADE B ,HP-KM-LANDMARK WOOD, GRADE A ,TR-K-CHARCOAL, GRADE A ,LR-BL-BLACK, GRADE A	1	925.57	925.57
104	00	X5Y5-1916-BSSNLLN	MASTERS SERIES,WRDROBE,LAM,5H,19DX16W,BAR PULL,NO LK,LH,NO TOE KICK PO114	1	599.24	599.24

**Project:** 40541  
**Proj Desc:** The Wood

**Quote:** 40541.004  
**Status:** New

**Sold To:** 6637-00  
 City of Brooklyn Park  
 7100 Zane Ave N  
 Brooklyn Park, MN 55429  
 Attention: Brad Tullberg

**Bill To:** 6637-01  
 City of Brooklyn Park  
 5200 85th Avenue North  
 Brooklyn Park, MN 55443-4300  
 Attention: Accounts Payable

**Ship To:** 6637-00  
 City of Brooklyn Park  
 7100 Zane Ave N  
 Brooklyn Park, MN 55429  
 Attention: Brad Tullberg  
 Email: brad.tullberg@brooklynpark.org

Date Entered	Customer PO	Salesperson	FOB	Terms
09/02/2025		Natasha Fonville	D	Net 15 Days

Line	Loc	Item Number	Description	Order Qty	Unit Price	Extended
			<b>Options:</b> ,H-KM-LANDMARK WOOD, GRADE B ,HP-KM-LANDMARK WOOD, GRADE A ,TR-K-CHARCOAL, GRADE A			
105	00	XLWF-1930-JSNNN	MASTERS SERIES, CREENZA TOP, LAM, 19"DX30"W, EB3, NO GRAIN, NO GROMMET PO114	1	99.78	99.78
			<b>Options:</b> ,H-KM-LANDMARK WOOD, GRADE B ,HP-KM-LANDMARK WOOD, GRADE A			
106	00	EUF1-PF0B-21000	CLASSIC POWER MODULE, 3 PORT, 2 RECPT, 1 USB, BLACK, 6 CORD PO115	1	129.06	129.06
107	00	EUFB-0000-SB	CLASSIC POWER MODULE, BRKT, VERTICAL ABOVE WS, BLK PO115	1	30.96	30.96
108	00	KUAF-XXXX	TACKBOARD, WALL-MOUNTED, UNIVERSAL 30"H X 60" W, VARIABLE SIZE, EXACT PO115	1	286.86	286.86
			<b>Options:</b> ,RR-372 ,30IN ,60IN			
110	00	S7H-44-0H	MAARI SLED BASE, POLY SEAT, POLY BACK, NO ARM, PLASTIC GLIDE PO115	2	207.44	414.88
			<b>Options:</b> ,TR-1V-INDIGO GRD A ,TR-F-BLACK GRD A			
111	00	SCT-20-7115	VERY TASK CHAIR, FAB SEAT, MESH BK, 4D ARMS, PLSTC BSE HD CTRS, BK LK, W/LUM, PO115	1	683.65	683.65
			<b>Options:</b> (4H)-BLANKET GRD A ,4H-CC-COCOON GRD A (MS)-VERY TASK MESH GRD A ,MS-F-BLACK GRD A ,TR-F-BLACK GRD A ,TR-F-BLACK GRD A ,TR-F-BLACK GRD A			
112	00	TA0M-1360-LF	PLANES, MODESTY PANEL, 13INX60IN, LAM, FULL PO115	1	168.30	168.30
			<b>Options:</b> ,H-KM-LANDMARK WOOD GRD B ,HP-KM-LANDMARK WOOD GRD A			
113	00	TAWB-0918	BELONG, UNIVERSAL, WIRE MANAGEMENT BASKET, 9"HX18"W PO115	1	81.11	81.11
114	00	TCRN-3030-LJSNDN4	JIVE, TBL, RD, LAM, 30"X30", EB3, STD, CO:NONE, DISC, N, 29"H PO115	1	502.20	502.20
			<b>Options:</b> ,H-8J-CHARCOAL, GRADE A ,HP-8J-CHARCOAL, GRADE A ,TR-K-CHARCOAL, GRADE A			
115	00	TJRA-2970-LJSNCXN	UPSIDE, TABLE, 29"X70", LAM, EB3, STD, NO CO, C- LEG, SINGLE STAGE, SIMPLE PADDLE PO115	1	689.17	689.17
			<b>Options:</b> ,H-KM-LANDMARK WOOD, GRADE B ,HP-KM-LANDMARK WOOD, GRADE A ,TR-K-CHARCOAL, GRADE A			

**Project:** 40541  
**Proj Desc:** The Wood

**Quote:** 40541.004  
**Status:** New

**Sold To:** 6637-00  
 City of Brooklyn Park  
 7100 Zane Ave N  
 Brooklyn Park, MN 55429  
 Attention: Brad Tullberg

**Bill To:** 6637-01  
 City of Brooklyn Park  
 5200 85th Avenue North  
 Brooklyn Park, MN 55443-4300  
 Attention: Accounts Payable

**Ship To:** 6637-00  
 City of Brooklyn Park  
 7100 Zane Ave N  
 Brooklyn Park, MN 55429  
 Attention: Brad Tullberg  
 Email: brad.tullberg@brooklynpark.org

Date Entered	Customer PO	Salesperson	FOB	Terms
09/02/2025		Natasha Fonville	D	Net 15 Days

Line	Loc	Item Number	Description	Order Qty	Unit Price	Extended
116	00	ULNL-1760-NSN	MASTERS SERIES,OSU,OPEN,LAM,LTR,17"HX60"W PO115 <b>Options:</b> ,H-KM-LANDMARK WOOD, GRADE B ,HP-KM-LANDMARK WOOD, GRADE A	1	724.13	724.13
117	00	X5FB-1830-NSBSSYLLN	MASTERS SERIES,LAT FILE,ATTACHED,LAM,B/F,1.5H,18DX30W,BLK MITERFOLD,BAR PULL,FIN BK,LK,NO TOE KICK PO115 <b>Options:</b> ,H-KM-LANDMARK WOOD, GRADE B ,HP-KM-LANDMARK WOOD, GRADE A ,TR-K-CHARCOAL, GRADE A ,LR-BL-BLACK, GRADE A	1	925.57	925.57
118	00	X5Y5-1916-BSSNLLN	MASTERS SERIES,WRDROBE,LAM,5H,19DX16W,BAR PULL,NO LK,LH,NO TOE KICK PO115 <b>Options:</b> ,H-KM-LANDMARK WOOD, GRADE B ,HP-KM-LANDMARK WOOD, GRADE A ,TR-K-CHARCOAL, GRADE A	1	599.24	599.24
119	00	XLWF-1930-JSNNN	MASTERS SERIES,CREDENZA TOP,LAM,19"DX30"W,EB3,NO GRAIN,NO GROMMET PO115 <b>Options:</b> ,H-KM-LANDMARK WOOD, GRADE B ,HP-KM-LANDMARK WOOD, GRADE A	1	99.78	99.78
120	00	EUF1-PF0B-21000	CLASSIC POWER MODULE,3 PORT,2 RECPT,1 USB,BLACK,6 CORD PO122	1	129.06	129.06
121	00	EUFB-0000-SB	CLASSIC POWER MODULE,BRKT,VERTICAL ABOVE WS,BLK PO122	1	30.96	30.96
122	00	KUAF-XXXX	TACKBOARD,WALL-MOUNTED,UNIVERSAL 30"H X 60" W,VARIABLE SIZE,EXACT PO122 <b>Options:</b> ,RR-372 ,30IN ,60IN	1	286.86	286.86
124	00	S7H-44-0H	MAARI SLED BASE, POLY SEAT, POLY BACK, NO ARM, PLASTIC GLIDE PO122 <b>Options:</b> ,TR-F-BLACK GRD A ,TR-F-BLACK GRD A	2	207.44	414.88
125	00	SCT-20-7115	VERY TASK CHAIR,FAB SEAT,MESH BK,4D ARMS,PLSTC BSE HD CTRS,BK LK, W/LUM, PO122 <b>Options:</b> (4H)-BLANKET GRD A ,4H-CC-COCOON GRD A (MS)-VERY TASK MESH GRD A ,MS-F-BLACK GRD A ,TR-F-BLACK GRD A ,TR-F-BLACK GRD A ,TR-F-BLACK GRD A	1	683.65	683.65
126	00	TA0M-1360-LF	PLANES,MODESTY PANEL,13INX60IN,LAM,FULL PO122 <b>Options:</b> ,H-KM-LANDMARK WOOD GRD B ,HP-KM-LANDMARK WOOD GRD A	1	168.30	168.30

**Project:** 40541  
**Proj Desc:** The Wood  
**Quote:** 40541.004  
**Status:** New

**Sold To:** 6637-00  
 City of Brooklyn Park  
 7100 Zane Ave N  
 Brooklyn Park, MN 55429  
 Attention: Brad Tullberg

**Bill To:** 6637-01  
 City of Brooklyn Park  
 5200 85th Avenue North  
 Brooklyn Park, MN 55443-4300  
 Attention: Accounts Payable

**Ship To:** 6637-00  
 City of Brooklyn Park  
 7100 Zane Ave N  
 Brooklyn Park, MN 55429  
 Attention: Brad Tullberg  
 Email: brad.tullberg@brooklynpark.org

Date Entered	Customer PO	Salesperson	FOB	Terms
09/02/2025		Natasha Fonville	D	Net 15 Days

Line	Loc	Item Number	Description	Order Qty	Unit Price	Extended
127	00	TAWB-0918	BELONG,UNIVERSAL,WIRE MANAGEMENT BASKET,9"HX18"W PO122	1	81.11	81.11
128	00	TCRN-3030-LJSNDN4	JIVE,TBL,RD,LAM,30"X30",EB3,STD,CO:NONE,DISC,N,29"H PO122 <b>Options:</b> ,H-8J-CHARCOAL, GRADE A ,HP-8J-CHARCOAL, GRADE A ,TR-K-CHARCOAL, GRADE A	1	502.20	502.20
129	00	TJRA-2970-LJSNCXN	UPSIDE,TABLE,29"X70",LAM,EB3,STD,NO CO,C-LEG,SINGLE STAGE, SIMPLE PADDLE PO122 <b>Options:</b> ,H-KM-LANDMARK WOOD, GRADE B ,HP-KM-LANDMARK WOOD, GRADE A ,TR-K-CHARCOAL, GRADE A	1	689.17	689.17
130	00	ULNL-1760-NSN	MASTERS SERIES,OSU,OPEN,LAM,LTR,17"HX60"W PO122 <b>Options:</b> ,H-KM-LANDMARK WOOD, GRADE B ,HP-KM-LANDMARK WOOD, GRADE A	1	724.13	724.13
131	00	X5FB-1830-NSBSSYLLN	MASTERS SERIES,LAT FILE,ATTACHED,LAM,B/F,1.5H,18DX30W,BLK MITERFOLD,BAR PULL,FIN BK,LK,NO TOE KICK PO122 <b>Options:</b> ,H-KM-LANDMARK WOOD, GRADE B ,HP-KM-LANDMARK WOOD, GRADE A ,TR-K-CHARCOAL, GRADE A ,LR-BL-BLACK, GRADE A	1	925.57	925.57
132	00	X5Y5-1916-BSSNLLN	MASTERS SERIES,WRDROBE,LAM,5H,19DX16W,BAR PULL,NO LK,LH,NO TOE KICK PO122 <b>Options:</b> ,H-KM-LANDMARK WOOD, GRADE B ,HP-KM-LANDMARK WOOD, GRADE A ,TR-K-CHARCOAL, GRADE A	1	599.24	599.24
133	00	XLWF-1930-JSNNN	MASTERS SERIES,CREDENZA TOP,LAM,19"DX30"W,EB3,NO GRAIN,NO GROMMET PO122 <b>Options:</b> ,H-KM-LANDMARK WOOD, GRADE B ,HP-KM-LANDMARK WOOD, GRADE A	1	99.78	99.78
134	00	EUF1-PF0B-21000	CLASSIC POWER MODULE,3 PORT,2 RECPT,1 USB,BLACK,6 CORD PO216	1	129.06	129.06
135	00	EUFB-0000-SB	CLASSIC POWER MODULE,BRKT,VERTICAL ABOVE WS,BLK PO216	1	30.96	30.96
136	00	KUAF-XXXX	TACKBOARD,WALL-MOUNTED,UNIVERSAL 30"H X 60" W,VARIABLE SIZE,EXACT PO216 <b>Options:</b> ,RR-372 ,30IN ,60IN	1	286.86	286.86
138	00	S7H-44-0H	MAARI SLED BASE, POLY SEAT, POLY BACK, NO ARM, PLASTIC GLIDE PO216 <b>Options:</b> ,TR-F-BLACK, GRADE A	2	207.44	414.88

**Project:** 40541  
**Proj Desc:** The Wood

**Quote:** 40541.004  
**Status:** New

**Sold To:** 6637-00  
 City of Brooklyn Park  
 7100 Zane Ave N  
 Brooklyn Park, MN 55429  
 Attention: Brad Tullberg

**Bill To:** 6637-01  
 City of Brooklyn Park  
 5200 85th Avenue North  
 Brooklyn Park, MN 55443-4300  
 Attention: Accounts Payable

**Ship To:** 6637-00  
 City of Brooklyn Park  
 7100 Zane Ave N  
 Brooklyn Park, MN 55429  
 Attention: Brad Tullberg  
 Email: brad.tullberg@brooklynpark.org

Date Entered	Customer PO	Salesperson	FOB	Terms
09/02/2025		Natasha Fonville	D	Net 15 Days

Line	Loc	Item Number	Description	Order Qty	Unit Price	Extended
139	00	SCT-20-7115	,TR-F-BLACK, GRADE A VERY TASK CHAIR,FAB SEAT,MESH BK,4D ARMS,PLSTC BSE HD CTRS,BK LK, W/LUM, PO216 <b>Options:</b> (4H)-BLANKET GRD A ,4H-CC-COCOON GRD A (MS)-VERY TASK MESH GRD A ,MS-F-BLACK GRD A ,TR-F-BLACK GRD A ,TR-F-BLACK GRD A ,TR-F-BLACK GRD A	1	683.65	683.65
140	00	TA0M-1360-LF	PLANES,MODESTY PANEL,13INX60IN,LAM,FULL PO216 <b>Options:</b> ,H-KM-LANDMARK WOOD GRD B ,HP-KM-LANDMARK WOOD GRD A	1	168.30	168.30
141	00	TAWB-0918	BELONG,UNIVERSAL,WIRE MANAGEMENT BASKET,9"HX18"W PO216	1	81.11	81.11
142	00	TCRN-3030-LJSNDN4	JIVE,TBL,RD,LAM,30"X30",EB3,STD,CO:NONE,DISC,N, 29"H PO216 <b>Options:</b> ,H-8J-CHARCOAL, GRADE A ,HP-8J-CHARCOAL, GRADE A ,TR-K-CHARCOAL, GRADE A	1	502.20	502.20
143	00	TJRA-2964-LJSNCXG	UPSIDE+,TABLE,29"X64",LAM,EB3,STD,NO CO,C- LEG,SINGLE STAGE, SIMPLE PADDLE PO216 <b>Options:</b> ,H-KM-LANDMARK WOOD GRD B ,HP-KM-LANDMARK WOOD GRD A ,TR-K-CHARCOAL GRD A	1	803.95	803.95
144	00	ULNL-1760-NSN	MASTERS SERIES,OSU,OPEN,LAM,LTR,17"HX60"W PO216 <b>Options:</b> ,H-KM-LANDMARK WOOD, GRADE B ,HP-KM-LANDMARK WOOD, GRADE A	1	724.13	724.13
145	00	X5FB-1830-NSBSSYLLN	MASTERS SERIES,LAT FILE,ATTACHED,LAM,B/F,1.5H,18DX30W,BLK MITERFOLD,BAR PULL,FIN BK,LK,NO TOE KICK PO216 <b>Options:</b> ,H-KM-LANDMARK WOOD, GRADE B ,HP-KM-LANDMARK WOOD, GRADE A ,TR-K-CHARCOAL, GRADE A ,LR-BL-BLACK, GRADE A	1	925.57	925.57
146	00	X5Y5-1916-BSSNLLN	MASTERS SERIES,WRDROBE,LAM,5H,19DX16W,BAR PULL,NO LK,LH,NO TOE KICK PO216 <b>Options:</b> ,H-KM-LANDMARK WOOD, GRADE B ,HP-KM-LANDMARK WOOD, GRADE A ,TR-K-CHARCOAL, GRADE A	1	599.24	599.24
147	00	XLWF-1930-JSNNN	MASTERS SERIES,CREDENZA TOP,LAM,19"DX30"W,EB3,NO GRAIN,NO GROMMET PO216 <b>Options:</b> ,H-KM-LANDMARK WOOD, GRADE B ,HP-KM-LANDMARK WOOD, GRADE A	1	99.78	99.78
148	00	HN-20RD	HINCHADA 20.75X20.75X18 SMALL ROUND OTTOMAN	2	357.42	714.84

**Project:** 40541  
**Proj Desc:** The Wood  
**Quote:** 40541.004  
**Status:** New

**Sold To:** 6637-00  
 City of Brooklyn Park  
 7100 Zane Ave N  
 Brooklyn Park, MN 55429  
 Attention: Brad Tullberg

**Bill To:** 6637-01  
 City of Brooklyn Park  
 5200 85th Avenue North  
 Brooklyn Park, MN 55443-4300  
 Attention: Accounts Payable

**Ship To:** 6637-00  
 City of Brooklyn Park  
 7100 Zane Ave N  
 Brooklyn Park, MN 55429  
 Attention: Brad Tullberg  
 Email: brad.tullberg@brooklynpark.org

Date Entered	Customer PO	Salesperson	FOB	Terms
09/02/2025		Natasha Fonville	D	Net 15 Days

Line	Loc	Item Number	Description	Order Qty	Unit Price	Extended
			PHASE 2 <b>Options:</b> QZ-CONCEALED GLIDE (STANDARD) ~OFS-OFS ~HALO-HALO - GRADE 2 3134190-LUSTRE X9-NO WELT X9-NO SELECTION X9-NO SELECTION - GRADE X9 X9-NO SELECTION - GRADE X9			
149	00	HN-20RD	HINCHADA - ROUND OTTOMAN PHASE 2	2	357.42	714.84
			<b>Options:</b> QZ-CONCEALED GLIDE (STANDARD) ~OFS-OFS ~HALO-HALO - GRADE 2 3134194-AURA X9-NO WELT X9-NO SELECTION X9-NO SELECTION - GRADE X9 X9-NO SELECTION - GRADE X9			
150	00	CC-M24CB	INTERMIX - CYLINDER BASE - LAMINATE PHASE 2	1	1,162.42	1,162.42
			<b>Options:</b> ~HPL-OFS HPL BLP-BLACK (BLP) RB-WIRE ACCESS DOOR			
151	00	CC-P6060RT	INTERMIX - TFL WOODGRAIN 2MM PP EDGE - SEATS 7 PHASE 2	1	393.76	393.76
			<b>Options:</b> CO2-LINEN (CO2) CO2-LINEN (CO2) QV-CUTOUT OVER 1ST BASE			
152	00	PS-69B	IN SURFACE POWER - - BLACK PHASE 2	1	163.30	163.30
153	00	ASK12226	INTERMIX - DEUCE BASES PHASE 2	1	1,454.52	1,454.52
			<b>Options:</b> H7A-WIRE MANAGEMENT BKO-ONYX BKO-ONYX			
154	00	PSH-16PP	IN SURFACE POWER - - SILVER POWDER COAT PHASE 2	2	179.86	359.72
155	00	CC-P14448RT	INTERMIX - TFL WOODGRAIN TOP WITH 2MM PP EDGE - SEATS 12 PHASE 2	1	842.26	842.26
			<b>Options:</b> CO2-LINEN (CO2) CO2-LINEN (CO2) ~3BA-CUTOUTS FOR 3 BASES QS-QT-CUTOUT ONLY BETWEEN 1ST & 2ND AND 2ND & 3RD			
156	00	88-42HYU-C	GATHR - GANGING MODULE, CENTER POSITION PHASE 2	1	3,229.20	3,229.20
			<b>Options:</b> ~HPL-HPL COP-LINEN (QUARTER GRAIN) GSKG-GRAY GASKET A8Y-CENTER POWER H8P-BLACK BKO-ONYX			

**Project:** 40541  
**Proj Desc:** The Wood  
**Quote:** 40541.004  
**Status:** New

**Sold To:** 6637-00  
 City of Brooklyn Park  
 7100 Zane Ave N  
 Brooklyn Park, MN 55429  
 Attention: Brad Tullberg

**Bill To:** 6637-01  
 City of Brooklyn Park  
 5200 85th Avenue North  
 Brooklyn Park, MN 55443-4300  
 Attention: Accounts Payable

**Ship To:** 6637-00  
 City of Brooklyn Park  
 7100 Zane Ave N  
 Brooklyn Park, MN 55429  
 Attention: Brad Tullberg  
 Email: brad.tullberg@brooklynpark.org

Date Entered	Customer PO	Salesperson	FOB	Terms
09/02/2025		Natasha Fonville	D	Net 15 Days

Line	Loc	Item Number	Description	Order Qty	Unit Price	Extended
157	00	88-42HYU-L	X9-NONE X9-NONE - GRADE X9 ~QTR-VENEER QUARTER - SUPER MATTE SMOAK-OAK SUPER MATTE PBL-LINER ~SPR-SPRADLING ~WHISPER-WHISPER - GRADE 3 3009835-BLACK WHI-2140 GATHR - GANGING MODULE, LEFT POSITION PHASE 2	1	4,162.54	4,162.54
			<b>Options:</b> ~HPL-HPL COP-LINEN (QUARTER GRAIN) GSKG-GRAY GASKET A8Y-CENTER POWER H8P-BLACK BKO-ONYX X9-NONE X9-NONE - GRADE X9 ~QTR-VENEER QUARTER - SUPER MATTE SMOAK-OAK SUPER MATTE ~QTR-VENEER QUARTER - SUPER MATTE SMOAK-OAK SUPER MATTE PBL-LINER ~SPR-SPRADLING ~WHISPER-WHISPER - GRADE 3 3009835-BLACK WHI-2140			
158	00	88-42HYU-R	GATHR - GANGING MODULE, RIGHT POSITION PHASE 2	1	4,162.54	4,162.54
			<b>Options:</b> ~HPL-HPL COP-LINEN (QUARTER GRAIN) GSKG-GRAY GASKET A8Y-CENTER POWER H8P-BLACK BKO-ONYX X9-NONE X9-NONE - GRADE X9 ~QTR-VENEER QUARTER - SUPER MATTE SMOAK-OAK SUPER MATTE ~QTR-VENEER QUARTER - SUPER MATTE SMOAK-OAK SUPER MATTE PBL-LINER ~SPR-SPRADLING ~WHISPER-WHISPER - GRADE 3 3009835-BLACK WHI-2140			
159	00	PS-GDB	GATHR - POWER DISTRIBUTION BLOCK PHASE 2	3	25.30	75.90
160	00	PS-MPW	GATHR - POWER INFEED PHASE 2	1	164.68	164.68
161	00	PS-MJ	GATHR - POWER JUMPER PHASE 2	2	44.16	88.32
			<b>Options:</b> 54-54"			
162	00	C02LNG0501	CLARETTE,LOUNGE,1 SEAT,ARMLESS FLEX ROOM 116	3	1,055.25	3,165.75
			<b>Options:</b> 1-GRADE 1 13119-ENTWINE BERRY STD-STANDARD GLIDE			
163	00	C02LNG0501	CLARETTE,LOUNGE,1 SEAT,ARMLESS	2	1,055.25	2,110.50

**Project:** 40541  
**Proj Desc:** The Wood  
**Quote:** 40541.004  
**Status:** New

**Sold To:** 6637-00  
 City of Brooklyn Park  
 7100 Zane Ave N  
 Brooklyn Park, MN 55429  
 Attention: Brad Tullberg

**Bill To:** 6637-01  
 City of Brooklyn Park  
 5200 85th Avenue North  
 Brooklyn Park, MN 55443-4300  
 Attention: Accounts Payable

**Ship To:** 6637-00  
 City of Brooklyn Park  
 7100 Zane Ave N  
 Brooklyn Park, MN 55429  
 Attention: Brad Tullberg  
 Email: brad.tullberg@brooklynpark.org

Date Entered	Customer PO	Salesperson	FOB	Terms
09/02/2025		Natasha Fonville	D	Net 15 Days

Line	Loc	Item Number	Description	Order Qty	Unit Price	Extended
			FLEX ROOM 116 <b>Options:</b> 1-GRADE 1 13124-ENTWINE SCARLET STD-STANDARD GLIDE			
164	00	C02LNG0901	CLARETTE,INSIDE CORNER FLEX ROOM 116 <b>Options:</b> 1-GRADE 1 13124-ENTWINE SCARLET STD-STANDARD GLIDE	1	1,318.05	1,318.05
165	00	N93GB2	FRINGE,GANGING CONNECTOR BRACKET,SET OF 2 FUSIONBREAKROOM	2	45.45	90.90
166	00	N93MBH2MSPX	FRINGE,MID BOOTH,2 SEAT,SINGLE-SIDE,PLINTH BASE,CONTRAST FUSIONBREAKROOM <b>Options:</b> 2-GRADE 2 11905-DOLCE PEACOCK 2-GRADE 2 11905-DOLCE PEACOCK 2-GRADE 2 11905-DOLCE PEACOCK 2-GRADE 2 11905-DOLCE PEACOCK G23BL-POWER GROMMET,BLACK,LEFT STD-STANDARD GLIDE	3	2,137.95	6,413.85
167	00	C02BKT0101	CLARETTE, GANGING BRACKET KIT INTERVENTION	1	61.20	61.20
168	00	C02LNG0601	CLARETTE, LOUNGE, 1 SEAT, RIGHT ARM INTERVENTION <b>Options:</b> 1-GRADE 1 13127-ENTWINE HARBOR STD-STANDARD GLIDE	1	1,176.75	1,176.75
169	00	C02LNG0701	CLARETTE, LOUNGE, 1 SEAT, LEFT ARM INTERVENTION <b>Options:</b> 1-GRADE 1 13127-ENTWINE HARBOR STD-STANDARD GLIDE	1	1,176.75	1,176.75
170	00	N10PSQ1414	TOSS,PILLOW,14DX14W,SQUARE INTERVENTION <b>Options:</b> F1-CLASSIC FILL 1-GRADE 1 13125-ENTWINE SQUASH	2	84.60	169.20
171	00	C02BKT0101	CLARETTE, GANGING BRACKET KIT MUSIC ROOM	3	61.20	183.60
172	00	C02LNG0501	CLARETTE, LOUNGE, 1 SEAT, ARMLESS MUSIC ROOM <b>Options:</b> 1-GRADE 1 13117-ENTWINE DEEP SEA STD-STANDARD GLIDE	2	1,055.25	2,110.50
173	00	C02LNG0501	CLARETTE, LOUNGE, 1 SEAT, ARMLESS MUSIC ROOM <b>Options:</b> 1-GRADE 1 13127-ENTWINE HARBOR STD-STANDARD GLIDE	1	1,055.25	1,055.25
174	00	C02LNG0701	CLARETTE, LOUNGE, 1 SEAT, LEFT ARM	1	1,176.75	1,176.75

**Project:** 40541  
**Proj Desc:** The Wood

**Quote:** 40541.004  
**Status:** New

**Sold To:** 6637-00  
 City of Brooklyn Park  
 7100 Zane Ave N  
 Brooklyn Park, MN 55429  
 Attention: Brad Tullberg

**Bill To:** 6637-01  
 City of Brooklyn Park  
 5200 85th Avenue North  
 Brooklyn Park, MN 55443-4300  
 Attention: Accounts Payable

**Ship To:** 6637-00  
 City of Brooklyn Park  
 7100 Zane Ave N  
 Brooklyn Park, MN 55429  
 Attention: Brad Tullberg  
 Email: brad.tullberg@brooklynpark.org

Date Entered	Customer PO	Salesperson	FOB	Terms
09/02/2025		Natasha Fonville	D	Net 15 Days

Line	Loc	Item Number	Description	Order Qty	Unit Price	Extended
			MUSIC ROOM			
		<b>Options:</b>	1-GRADE 1 13127-ENTWINE HARBOR STD-STANDARD GLIDE			
175	00	PHKL040	PHKL040 KILO ISLAND - SMALL CONFIGURATION KILO ISLAND - SMALL CONFIGURATION W 64.5", D 54.5", H 32", SH 16.5"	2	5,057.02	10,114.04
		<b>Options:</b>	PHASE 2 SOLO 2-INCLUDED SOLO 6-INCLUDED KNOLL INFINITE PEPPER-ORANGE			
176	00	HTFE015-BLP	FLOTE LOUNGE CHAIR - CONTRASTING WELT DETAIL FLOTE LOUNGE CHAIR - CONTRASTING WELT DETAIL LEG OPTION: BLACK PO	4	2,820.54	11,282.16
		<b>Options:</b>	PHASE 2 KNOLL HOURGLASS AEGEAN-466846-018 KNOLL HOURGLASS SPRING-466846-016 BLACK POWDER COAT			
177	00	FREIGHT - COMMON CARRIER	FREIGHT - COMMON CARRIER	1	2,813.36	2,813.36
178	00	TARIFFS & SURCHARGES	TARIFFS & SURCHARGES	1	1,366.44	1,366.44
179	00	FLEX-FLC-5414-30-G05	FLEX FLOOR, 90 DEGREE CURVE, 30"H (54" X 14")	2	3,139.08	6,278.16
		<b>Options:</b>	PHASE 2 09505230-MOMENTUM HYDE CV - PERIDOT			
180	00	FLEX-FLC-4014-20-G05	FLEX FLOOR, 90 DEGREE CURVE, 20"H, (40" X 14")	2	1,596.92	3,193.84
		<b>Options:</b>	PHASE 2 09504988-MOMENTUM HYDE CV - CANEWARE			
181	00	FLEX-FLS-5614-30-G05	FLEX FLOOR STRAIGHT MODULAR SEATING - 3H	1	1,594.46	1,594.46
		<b>Options:</b>	PHASE 2 09505230-MOMENTUM HYDE CV - PERIDOT			
182	00	FLEX-FLS-5614-20-G05	FLEX FLOOR STRAIGHT MODULAR SEATING - 2H	1	1,271.39	1,271.39
		<b>Options:</b>	PHASE 2 09504988-MOMENTUM HYDE CV - CANEWARE			
185	00	BY1-OTTOLG-GY	BUMPER LARGE OTTOMAN VESPER LIGHT GREY	1	481.25	481.25
		<b>Options:</b>	PHASE 2			
186	00	FREIGHT - COMMON CARRIER	FREIGHT - COMMON CARRIER FROM BLUDOT	1	1,461.83	1,461.83
187	00	HM1-CTRSTL-BK	HOT MESH BLACK / COUNTER STOOL	6	293.13	1,758.78
		<b>Options:</b>	PHASE 2			
188	00	HM1-CTRSTL-GG	HOT MESH GREY GREEN / COUNTER STOOL	2	293.13	586.26
		<b>Options:</b>	PHASE 1			
189	00	HM1-CTRSTL-YL	HOT MESH NATURAL YELLOW / COUNTER STOOL	2	293.13	586.26
		<b>Options:</b>	PHASE 2			
190	00	HM1-CTRSTL-YL	HOT MESH NATURAL YELLOW / COUNTER STOOL	8	293.13	2,345.04
		<b>Options:</b>	PHASE 2			

**Project:** 40541  
**Proj Desc:** The Wood

**Quote:** 40541.004  
**Status:** New

**Sold To:** 6637-00  
 City of Brooklyn Park  
 7100 Zane Ave N  
 Brooklyn Park, MN 55429  
 Attention: Brad Tullberg

**Bill To:** 6637-01  
 City of Brooklyn Park  
 5200 85th Avenue North  
 Brooklyn Park, MN 55443-4300  
 Attention: Accounts Payable

**Ship To:** 6637-00  
 City of Brooklyn Park  
 7100 Zane Ave N  
 Brooklyn Park, MN 55429  
 Attention: Brad Tullberg  
 Email: brad.tullberg@brooklynpark.org

Date Entered	Customer PO	Salesperson	FOB	Terms
09/02/2025		Natasha Fonville	D	Net 15 Days

Line	Loc	Item Number	Description	Order Qty	Unit Price	Extended
191	00	HM1-CTRSTL-YL	HOT MESH NATURAL YELLOW / COUNTER STOOL PHASE 2	9	293.13	2,638.17
192	00	HM1-SCHAIR-BK	HOT MESH CHAIR BLACK PHASE 2	3	205.63	616.89
193	00	HM1-SCHAIR-RD	HOT MESH CHAIR HUMBLE RED PHASE 2	2	205.63	411.26
194	00	HM1-SCHAIR-YL	HOT MESH CHAIR NATURAL YELLOW PHASE 2	4	205.63	822.52
195	00	LS1-SWWLNG-CA	LOOKESSEE SWIVEL LOUNGE CHAIR CAMEL LEATHER PHASE 2	4	2,008.13	8,032.52
196	00	LS1-SWWLNG-CA	LOOKESSEE SWIVEL LOUNGE CHAIR CAMEL LEATHER PHASE 2	1	2,008.13	2,008.13
197	00	NT1-TLSIDE-WH	NOTE TALL SIDE TABLE WHITE PHASE 2	1	345.63	345.63
198	00	LGCASFETABLE	WALL MOUNTED CAFE TABLE, LARGE- 24" - BLACK PHASE 2	2	585.37	1,170.74
		<b>Options:</b>	24" BLACK			
199	00	57440	YUKON 46" 9-DRAWER MOBILE STORAGE CABINET IN BLUE PHASE 2	1	426.71	426.71
200	00	FREIGHT - COMMON CARRIER	FREIGHT - COMMON CARRIER FROM HARBOR FREIGHT	1	244.11	244.11
201	00	BKC2631016	ELEMENT ARP RUG 53" X 59" COLOR: BLUE PHASE 2	1	496.00	496.00
202	00	FREIGHT - COMMON CARRIER	FREIGHT - COMMON CARRIER FROM LUMENS LIGHTING LUMENS LIGHT LIVING	1	92.00	92.00
203	00	09505230	MOMENTUM HYDE CV, PERIDOT 14 YARDS NEEDED PHASE 2	14	60.37	845.18
		<b>Options:</b>	RANDYS CUSTOM BOOTHS COM, ALEASHA CADWALLADER 5140 W BROADWAY AVE CRYSTAL, MN 55429			
204	00	FREIGHT - COMMON CARRIER	FREIGHT - COMMON CARRIER FROM MOMENTUM	1	133.33	133.33
205	00	BRUNSWICK	BRUNSWICK TABLE TENNIS CONVERSION TOP, SUITABLE FOR 7-8 POOL TABLE PHASE 2	1	532.59	532.59
206	00	FREIGHT - COMMON CARRIER	FREIGHT - COMMON CARRIER FROM K. E. PETERS BILLIARD SUPPLY PETERS BILLIARDS	1	141.43	141.43
207	00	BANQUETTE 3	8" VERTICAL CHANNEL BACK, PULLOVER TOP AND SIDES W/UNITARY SEAT (WITH 3 SECTIONS) UPHD IN COM FABRIC WITH MOME PHASE 2	1	5,231.71	5,231.71
208	00	FREIGHT - COMMON CARRIER	FREIGHT - COMMON CARRIER FROM RANDYS BOOTH CO INC	1	2,600.00	2,600.00
209	00	MURPHEYDESK	MURPHEY DESK AND WALL MOUTNED TABLE MATERIAL: ASHLAND DIMENSIONS: 20" X 16" PHASE 2	1	670.73	670.73



**Fluid Interiors**  
 100 North 6th Street  
 Suite 100A  
 Minneapolis, MN 55403  
 Phone: 612-746-8700  
 Fax: 612-746-8701  
 Email/Web: www.fluidinteriors.com

**Quotation**

**Project:** 40541  
**Proj Desc:** The Wood

**Quote:** 40541.004  
**Status:** New

**Sold To:** 6637-00  
 City of Brooklyn Park  
 7100 Zane Ave N  
 Brooklyn Park, MN 55429  
 Attention: Brad Tullberg

**Bill To:** 6637-01  
 City of Brooklyn Park  
 5200 85th Avenue North  
 Brooklyn Park, MN 55443-4300  
 Attention: Accounts Payable

**Ship To:** 6637-00  
 City of Brooklyn Park  
 7100 Zane Ave N  
 Brooklyn Park, MN 55429  
 Attention: Brad Tullberg  
 Email: brad.tullberg@brooklynpark.org

Date Entered	Customer PO	Salesperson	FOB	Terms
09/02/2025		Natasha Fonville	D	Net 15 Days

Line	Loc	Item Number	Description	Order Qty	Unit Price	Extended
210	00	W006677318	MACKINZI 55 LED COLUMN FLOOR LAMP BY ORREN ELLIS IN BLACK FINISH PHASE 2	1	73.54	73.54
211	00	W006677318	MACKINZI 55 LED COLUMN FLOOR LAMP BY ORREN ELLIS IN BLACK FINISH PHASE 2	1	73.54	73.54

Subtotal		273,931.19
Total Tax	<b>USD</b>	0.00
<b>TOTAL AMOUNT -</b>		<b>273,931.19</b>
<b>Deposit Required :</b>		<b>138,972.78</b>

**Project Notes:**

Brooklyn Park Teen & Youth Center



**Fluid Interiors**  
 100 North 6th Street  
 Suite 100A  
 Minneapolis, MN 55403  
 Phone: 612-746-8700  
 Fax: 612-746-8701  
 Email/Web: www.fluidinteriors.com

**Quotation**

**Project:** 40541  
**Proj Desc:** The Wood

**Quote:** 40541.004  
**Status:** New

**Sold To:** 6637-00  
 City of Brooklyn Park  
 7100 Zane Ave N  
 Brooklyn Park, MN 55429  
 Attention: Brad Tullberg

**Bill To:** 6637-01  
 City of Brooklyn Park  
 5200 85th Avenue North  
 Brooklyn Park, MN 55443-4300  
 Attention: Accounts Payable

**Ship To:** 6637-00  
 City of Brooklyn Park  
 7100 Zane Ave N  
 Brooklyn Park, MN 55429  
 Attention: Brad Tullberg  
 Email: brad.tullberg@brooklynpark.org

Date Entered	Customer PO	Salesperson	FOB	Terms
09/02/2025		Natasha Fonville	D	Net 15 Days

**Project:** 40541  
**Proj Desc:** The Wood  
**Quote:** 40541.004  
**Status:** New

**Sold To:** 6637-00  
 City of Brooklyn Park  
 7100 Zane Ave N  
 Brooklyn Park, MN 55429  
 Attention: Brad Tullberg

**Bill To:** 6637-01  
 City of Brooklyn Park  
 5200 85th Avenue North  
 Brooklyn Park, MN 55443-4300  
 Attention: Accounts Payable

**Ship To:** 6637-00  
 City of Brooklyn Park  
 7100 Zane Ave N  
 Brooklyn Park, MN 55429  
 Attention: Brad Tullberg  
 Email: brad.tullberg@brooklynpark.org

Date Entered	Customer PO	Salesperson	FOB	Terms
09/02/2025		Natasha Fonville	D	Net 15 Days

**This Quote will expire on:** September 17, 2025

**TERMS AND CONDITIONS**

**FLUID INTERIORS, LLC TERMS AND CONDITIONS (GOODS AND SERVICES)**

These Terms and Conditions ("Terms") are entered into by and between Fluid Interiors, LLC, a Minnesota limited liability company and its division (Christiansons by Fluid), (collectively "Fluid"), and the Buyer named below and are effective as of the Effective Date.

**APPLICABILITY AND SCOPE.** These Terms are the only terms and conditions that govern the sale of products or goods ("Products"), or the provision of design, project management, installation, and related services (collectively, "Services") by Fluid to Buyer. References to the "Agreement" shall mean these Terms and any Proposal or Quote supplied by Fluid and approved by Buyer (an "Order"), and any attachments to the Order.

**PURCHASE ORDERS.**

- a. Following the parties' execution of the initial Order, the parties may, from time-to-time, execute additional Orders contemplating the provision and receipt of new or expanded Products and Services provided under a prior Order.
- b. Design services will be included in the Order based on the signed approval drawings. Project management services to coordinate and oversee installations are required and will be included in the Order. Any additional design or project management services beyond those originally quoted in the Order will be billed hourly according to Fluid's standard rate schedule in effect at that time.

**NOT RETAIL.** Products are not stocked by Fluid. Products are specifically ordered for Buyer and are not returnable. It is understood and agreed that the Order is final and binding and cannot be canceled or modified except by mutual written consent of the parties.

**CHANGES.**

Fluid's order confirmation is final and binding and any subsequent changes are subject to Fluid's ability to conform and are dependent upon supplier approval. Buyer may request changes or modifications when needed however, these shall be treated as non-binding requests unless and until both Buyer and Fluid have agreed in writing of the changes and any change in costs related to product, shipping, restocking fee or other costs. Fluid will make every effort to accommodate change requests at little to no additional costs. Change in quantity or specification are subject to approval by Fluid and supplier. Any resultant charges from supplier would be paid by the Buyer. All changes in quantity or specification shall be delivered in writing. Fluid will not be held responsible for supplier's failure to accept any changes. Change orders, amendments or modifications will not nullify the agreement between Fluid and Buyer.

- a. If changes occur on the jobsite or installation site (the "Site") requiring additional work, Fluid will present a written "Field Change Order" specifying the additional Services and corresponding charges for Buyer's approval.

**PRICING & PAYMENT.**

- a. Prices quoted by Fluid are good for fifteen (15) days from the date of Fluid's quotation. Buyer shall purchase the Products and Services from Fluid at the prices ("Price(s)") set forth in the Order. Unless specifically stated, Prices do not include any sales, use, and excise taxes, and any other applicable taxes, duties, and charges of any kind on any amounts payable by Buyer. Buyer is responsible for all such charges, costs and taxes. Fluid will make commercially reasonable efforts to include applicable manufacturer tariffs and surcharges in the Price. Tariffs and surcharges that are not presented at time of the Order will be invoiced to the Buyer separately.
- b. For all orders 50% deposit and balance due Net 15 days from date of invoice, which will be issued monthly upon substantial completion of work for services and upon delivery of product from the manufacturer. A monthly service charge of 2 1/2% per month will apply to all delinquent payments and will be added to the balance outstanding. A credit application is required when 50% deposit is made. Should Buyer not want to complete a credit application or if a credit application is denied by Fluid, 100% deposit is due before an order can be placed. Fluid may suspend the delivery, provision or performance of any Products or Services if Buyer fails to pay any amounts when due under the Agreement.

**DELIVERY TERMS.**

- a. Fluid will inform Buyer of an estimated date of delivery and install for the Products ("Estimated Delivery Date") when Fluid receives an estimated shipping date from its supplier or the product manufacturer. Buyer agrees that the Estimated Delivery Date is an estimate, is not guaranteed, and is subject to change without notice. Lead times vary widely by manufacturer, series, finish, and Buyer's Customer's Own Material ("COM") fabric. Fluid shall not be liable for any delays in delivery, including without limitation due to availability of COM fabrics or any other materials. Fluid will take commercially reasonable steps to facilitate timely delivery or performance.
- b. Delivery and installation work will be performed by Fluid's staff during normal business hours Monday through Friday, unless otherwise agreed in writing by Fluid. Installations and Services done after normal business hours or on weekends or holidays will be subject to an additional overtime charges and subject to Fluid's written acceptance.
- c. Unless otherwise agreed in writing by the parties, Fluid shall deliver the Products FCA manufacturer's shipping point using the Product manufacturer's standard methods for packaging and shipping.
- d. If special packaging or handling is required, it will be an extra charge payable by the Buyer.
- e. Fluid reserves the right in its sole discretion, without liability or penalty, to progress invoice Orders. Buyer shall pay for the Products shipped whether such shipment is in whole or partial fulfillment of Buyer's Order.
- f. Safe and adequate storage space for the Products will be provided by the Buyer at its sole cost and expense. If the space provided is inadequate, requires excessive sorting, storage or is inconveniently located or on another floor, Fluid will invoice Buyer for the extra cost of such handling or moving.
- g. If delivery cannot be made because of building or Site conditions, or other reasons beyond Fluid's control, Products will be placed in storage in Fluid's warehouse or a public warehouse (at Fluid's sole option). Fluid will invoice Buyer for additional charges as applicable for, any storage, labor and delivery charges. Buyer understands, acknowledges, and agrees that Fluid will invoice 100% of the un-invoiced Product as of manufacturer ship date. Storage charges will be invoiced for Products held in Fluid's warehouse at the Buyer's request for over thirty (30) days, unless otherwise agreed to in writing by both

**Project:** 40541  
**Proj Desc:** The Wood  
**Quote:** 40541.004  
**Status:** New

**Sold To:** 6637-00  
 City of Brooklyn Park  
 7100 Zane Ave N  
 Brooklyn Park, MN 55429  
 Attention: Brad Tullberg

**Bill To:** 6637-01  
 City of Brooklyn Park  
 5200 85th Avenue North  
 Brooklyn Park, MN 55443-4300  
 Attention: Accounts Payable

**Ship To:** 6637-00  
 City of Brooklyn Park  
 7100 Zane Ave N  
 Brooklyn Park, MN 55429  
 Attention: Brad Tullberg  
 Email: brad.tullberg@brooklynpark.org

Date Entered	Customer PO	Salesperson	FOB	Terms
09/02/2025		Natasha Fonville	D	Net 15 Days

parties.

**JOB SITE & INSTALLATION SERVICES.**

- a. The Site must be ready to accept furniture with construction complete (ceiling grid and tile in, wall covering/paint done, carpet and baseboard finished, electrical/data work done, etc.) and the space free of trades (punch list trades only), as well as clean and free of debris. Adequate facilities for off-loading, staging, moving and handling of product shall be provided by Buyer. Sites not ready to accept furniture will be subject to additional fees. The Price is based on a single-phase installation, any additional phasing due to unfinished construction will result in additional fees. Fluid is not responsible to keep furniture installation area free from construction dust. Any cleaning Services provided by Fluid to remove dust and debris created by on-going construction activity, during or after Fluid's installation, will be invoiced to Buyer on a "Time and Materials" basis.
- b. Electric connections, heat, ventilation, hoisting and elevator service at the Site will be provided by Buyer without charge to Fluid. Carrying or moving Products up or down stairs is NOT included in the Services, unless noted otherwise.
- c. Fluid's ability to erect or assemble furniture knocked-down or to permanently attach, affix, or bolt in place movable furniture is dependent on requirements based on the location of the Site and Products.

**INSPECTION AND REJECTION OF DELIVERED PRODUCTS.**

- a. Buyer shall inspect the Products within seven (7) days of delivery of the Products to the Site ("Inspection Period"). Buyer will be deemed to have accepted the Products unless it notifies Fluid in writing of any Nonconforming Products during the Inspection Period and furnishes written evidence or other documentation as required by Fluid.
- b. "Nonconforming Products" means only the following: (i) Product shipped is different than identified in Buyer's Order; or (ii) Product's label or packaging incorrectly identifies its contents. Nonconforming Products does not include Products that have different variations in wood grain, finish, or dye lot; and Products may not be rejected on this basis. Slight variations in wood product grain or color due to product age or natural differences in graining structure are beyond the control of Fluid. Minor variations between finishes in products provided by single or multiple manufacturers are also considered to be acceptable. Fabrics and painted products are subject to dye lot differences, which can cause minor variations in color. Such slight variations are generally acceptable and are beyond the control of Fluid.
- c. If Buyer timely notifies Fluid of any Nonconforming Products, Fluid shall, in its sole discretion, work with manufacturer to (i) replace such Nonconforming Products with conforming Products or (ii) provide another acceptable remedy.
- d. Buyer acknowledges and agrees that the remedies set forth in this section are Buyer's exclusive remedies for the delivery of Nonconforming Products.

**TITLE, RISK OF LOSS, AND SECURITY INTEREST.** The risk of loss passes from the manufacturer to the Buyer upon shipment from manufacturers dock. Fluid does not take ownership of the Product but will work with affected parties should a loss occur in the preceding. As collateral security for the payment of the Price of the Products, Buyer grants to Fluid a lien on and security interest in and to all of the right, title, and interest of Buyer in, to and under the Products, wherever located, and whether now existing or hereafter arising or acquired from time to time, and in all accessions thereto and replacements or modifications thereof, as well as all proceeds (including insurance proceeds) of the foregoing. The security interest granted under this provision constitutes a purchase money security interest under the Minnesota Uniform Commercial Code. Failure to pay for Product may result in Fluid's repossession of the Product. Fluid shall have the right to repossess without court order all delivered Products for which payment in full has not been received. Buyer agrees to pay costs and expenses, including attorneys' fees resulting from actions taken under this section.

**INSURANCE.** During the term of this Agreement, Buyer shall at its own expense, maintain and carry insurance in full force and effect, which shall include, but is not limited to, commercial general liability insurance (including product liability) in a sum no less than \$100,000, workers' compensation, and property insurance for the Transit, Site and Storage of the Products, with financially sound and reputable insurers.

**WARRANTY DISCLAIMER.**

a. Fluid provides punch documentation to the Buyer during installation and no less frequent than at the end of the job. Punch consists of Fluid personnel inspecting all products installed per plan completing any adjustments required so that the finished product, as installed, is free from defect or installation concerns. Once punch documentation is created and agreed upon (signed/documented), it is considered final and no adjustments will be considered. Any punch items unable to be remedied at substantial completion of install will be documented separately. Fluid warrants their labor and installation for the first year, beginning day 1 after installation, which will be communicated to the buyer at the same time as punch sign off. Fluid does not make any warranties of product sold hereunder whatsoever, including any warranty of merchantability or warranty that the product is fit for any particular use or purpose. The Buyer shall rely exclusively upon warranties provided by the supplier of all products sold hereunder, which are passed through to Buyer when permissible and "as is". Fluid will assist Buyer in the event of any claims for defective material or workmanship that may be made during the warranty period stated by the supplier. If Fluid is requested to perform warranty work and subsequently is determined that the product is not covered by any supplier warranty, Buyer will be charged for services at the current labor and travel rate. b. WHILE FLUID MAY AGREE IN ITS SOLE DISCRETION TO REPLACE THE PRODUCT(S) OR REFUND THE PURCHASE PRICE FOR THE PRODUCT(S) AND TO THE EXTENT PERMITTED BY LAW, FLUID DISCLAIMS AND SHALL HAVE NO OTHER WARRANTY OBLIGATION WHATSOEVER, INCLUDING WITHOUT LIMITATION THE WARRANTY OF MERCHANTABILITY OR WARRANTY OF FITNESS FOR A PARTICULAR PURPOSE, WHETHER EXPRESS OR IMPLIED BY LAW. COURSE OF DEAL, WITH RESPECT TO THE PRODUCT(S) AND SERVICES, AND ANY OTHER CLAIMS, LOSSES, LIABILITIES, DAMAGES, COSTS OR EXPENSES ATTRIBUTABLE TO ANY FAILURE TO CONFORM TO ANY WARRANTY UNDER THESE TERMS WILL BE SOLELY AS PERMITTED UNDER THESE TERMS. FLUID IS NOT RESPONSIBLE FOR COSTS OR ANY DAMAGES THAT RESULT FROM USE OR MISUSE OF THE PRODUCT(S).

**CLAIMS AND LIMITATION OF LIABILITY.**

a. All claims shall be deemed waived unless made in writing and delivered to Fluid within seven (7) days after receipt of Products. Buyer shall afford Fluid

**Project:** 40541  
**Proj Desc:** The Wood  
**Quote:** 40541.004  
**Status:** New

**Sold To:** 6637-00  
 City of Brooklyn Park  
 7100 Zane Ave N  
 Brooklyn Park, MN 55429  
 Attention: Brad Tullberg

**Bill To:** 6637-01  
 City of Brooklyn Park  
 5200 85th Avenue North  
 Brooklyn Park, MN 55443-4300  
 Attention: Accounts Payable

**Ship To:** 6637-00  
 City of Brooklyn Park  
 7100 Zane Ave N  
 Brooklyn Park, MN 55429  
 Attention: Brad Tullberg  
 Email: brad.tullberg@brooklynpark.org

Date Entered	Customer PO	Salesperson	FOB	Terms
09/02/2025		Natasha Fonville	D	Net 15 Days

prompt and reasonable opportunity to inspect the Products, Site, or Services. Fluid reserves the right, at its sole discretion, but does not have the obligation, to remedy any claimed defect in the Products or to replace such Products. Buyer may not offset or otherwise reduce or restrict payment of any invoice due to a claim.

b. IN NO EVENT SHALL FLUID BE LIABLE TO BUYER OR ANY THIRD PARTY FOR ANY LOSS OF USE, LOSS OF REVENUE OR PROFIT, MANUFACTURING COSTS, DIMINUTION IN VALUE, LOSS OF PRODUCTS WILL, OR FOR ANY CONSEQUENTIAL, INDIRECT, INCIDENTAL, SPECIAL, EXEMPLARY, OR PUNITIVE DAMAGES WHETHER ARISING OUT OF BREACH OF CONTRACT, TORT (INCLUDING NEGLIGENCE), OR OTHERWISE, REGARDLESS OF WHETHER SUCH DAMAGES WERE FORESEEABLE AND WHETHER OR NOT FLUID HAS BEEN ADVISED OF THE POSSIBILITY OF SUCH DAMAGES, AND NOTWITHSTANDING THE FAILURE OF ANY AGREED OR OTHER REMEDY OF ITS ESSENTIAL PURPOSE.

c. IN NO EVENT SHALL FLUID'S AGGREGATE LIABILITY ARISING OUT OF OR RELATED TO THIS AGREEMENT, WHETHER ARISING OUT OF OR RELATED TO BREACH OF CONTRACT, TORT (INCLUDING NEGLIGENCE), OR OTHERWISE, EXCEED THE TOTAL OF THE AMOUNTS PAID TO FLUID FOR THE PRODUCTS AND SERVICES SOLD UNDER THE SPECIFIC ORDER AT ISSUE.

**INDEMNIFICATION.** Each Party shall indemnify, defend, and hold harmless to the other party and its affiliates and their representatives, directors, officers, employees, and agents from and against any and all third-party claims, demands, suits, actions, judgments, costs, and liabilities (including attorney's fees) caused by the negligent or willful acts or omissions of Buyer or its directors, officers, employees, contractors, subcontractors, or agents.

**TERMINATION.** In addition to any remedies that may be provided under these Terms, Fluid may terminate this Agreement with immediate effect upon written notice to Buyer, if Buyer: (a) fails to pay any amount when due under this Agreement and such failure continues for ten (10) days after Buyer's receipt of written notice of nonpayment; (b) has not otherwise performed or complied with any of these Terms, in whole or in part; (c) becomes insolvent, files a petition for bankruptcy or commences or has commenced against it proceedings relating to bankruptcy, receivership, reorganization, or assignment for the benefit of creditors; or (d) at its convenience and for any reason or no reason.

**COMPLIANCE WITH LAW.** Buyer shall comply with all applicable laws, regulations, and ordinances. Buyer shall maintain in effect all the licenses, permissions, authorizations, consents, and permits that it needs to carry out its obligations under this Agreement.

**FORCE MAJEURE.** No party shall be liable or responsible to the other party, nor be deemed to have defaulted under or breached this Agreement, for any failure or delay in fulfilling or performing any term of this Agreement (except for any obligations of Buyer to make payments to Fluid), when and to the extent such failure or delay is caused by or results from acts beyond the impacted party's ("Impacted Party") reasonable control, including, without limitation, the following force majeure events ("Force Majeure Event(s)": (a) acts of God; (b) flood, fire, earthquake, or explosion; (c) war, invasion, hostilities (whether war is declared or not), terrorist threats or acts, riot or other civil unrest; (d) government order, law, or actions; (e) embargoes or blockades in effect on or after the date of this Agreement; (f) national or regional emergency; (g) strikes, labor stoppages or slowdowns, or other industrial disturbances; (h) shortage of adequate power or transportation facilities; and (i) other events beyond the reasonable control of the Impacted Party. The Impacted Party shall resume the performance of its obligations as soon as reasonably practicable after the removal of the cause. In addition, any act or omission of Buyer or its agents, subcontractors, consultants, or employees that impedes or delays Fluid's performance will be a Force Majeure Event.

**GENERAL TERMS & CONDITIONS.**

- a. These Terms and the Agreement is the final expression of the agreement between the Buyer and Fluid and supersedes all prior or contemporaneous oral and written statements regarding the Order. The Agreement may only be modified in writing by Fluid, or by a revised acknowledgment duly issued by Fluid. Fluid rejects any additional terms, provisions, or obligations that are not contained in these Terms, the Proposal or Quote, and Buyer's acceptance of the Proposal or Quote. Any other or additional terms, provisions, or obligations in Buyer's acceptance are expressly rejected.
- b. The relationship between the parties is that of independent contractors. Nothing contained in this Agreement shall be construed as creating any form of joint enterprise, employment, or fiduciary relationship between the parties; and neither party shall have authority to contract for or bind the other party in any manner whatsoever.
- c. Buyer shall reimburse Fluid for all costs incurred in collecting any payments due to Fluid, including, without limitation, reasonable attorneys' fees and court costs.
- d. This Agreement is for the sole benefit of the parties hereto and their respective successors and permitted assigns; and, nothing herein, express or implied, is intended to or shall confer upon any other person or entity any legal or equitable right, benefit, or remedy of any nature whatsoever under or by reason of these Terms.
- e. All matters arising out of or relating to this Agreement are governed by and construed in accordance with the internal laws of the State of Minnesota without giving effect to any choice or conflict of law provision or rule (whether of the State of Minnesota or any other jurisdiction) that would cause the application of the laws of any jurisdiction other than those of the State of Minnesota. Any legal suit, action, or proceeding arising out of or relating to this Agreement shall be instituted in the federal or state courts of the State of Minnesota in each case located in Hennepin County and each party irrevocably submits to the exclusive jurisdiction of such courts in any such suit, action, or proceeding.
- f. All notices, requests, consents, claims, demands, waivers, and other communications hereunder (each, a "Notice") shall be in writing and addressed to the parties at the addresses set forth on the face of the Order or to such other address that may be designated by the receiving party in writing. All Notices shall be delivered by email, personal delivery, nationally recognized overnight courier (with all fees pre-paid), facsimile (with confirmation of transmission), or certified or registered mail (in each case, return receipt requested, postage prepaid). Except as otherwise provided in this Agreement, a Notice is effective only (a) upon receipt of the receiving party, and (b) if the party giving the Notice has complied with the requirements of this Section.
- g. If any term or provision of this Agreement is invalid, illegal, or unenforceable in any jurisdiction, such invalidity, illegality, or unenforceability shall not affect any other term or provision of this Agreement or invalidate or render unenforceable such term or provision in any other jurisdiction.
- h. Provisions of these Terms which by their nature should apply beyond their terms will remain in force after any termination or expiration of this Agreement.



**Fluid Interiors**  
 100 North 6th Street  
 Suite 100A  
 Minneapolis, MN 55403  
 Phone: 612-746-8700  
 Fax: 612-746-8701  
 Email/Web: www.fluidinteriors.com

**Project:** 40541  
**Proj Desc:** The Wood

**Quote:** 40541.004  
**Status:** New

**Sold To:** 6637-00  
 City of Brooklyn Park  
 7100 Zane Ave N  
 Brooklyn Park, MN 55429  
 Attention: Brad Tullberg

**Bill To:** 6637-01  
 City of Brooklyn Park  
 5200 85th Avenue North  
 Brooklyn Park, MN 55443-4300  
 Attention: Accounts Payable

**Ship To:** 6637-00  
 City of Brooklyn Park  
 7100 Zane Ave N  
 Brooklyn Park, MN 55429  
 Attention: Brad Tullberg  
 Email: brad.tullberg@brooklynpark.org

Date Entered	Customer PO	Salesperson	FOB	Terms
09/02/2025		Natasha Fonville	D	Net 15 Days

i. No waiver by Fluid of any of the provisions of this Agreement is effective unless explicitly set forth in writing and signed by Fluid. No failure to exercise, or delay in exercising, any right, remedy, power or privilege arising from this Agreement operates, or may be construed, as a waiver thereof. No single or partial exercise of any right, remedy, power or privilege hereunder precludes any other or further exercise thereof or the exercise of any other right, remedy, power, or privilege.

j. Buyer shall not assign any of its rights or delegate any of its obligations under this Agreement without the prior written consent of Fluid. Any purported assignment or delegation in violation of this Section is null and void. No assignment or delegation relieves Buyer of any of its obligations under this Agreement.

Subtotal	273,931.19
<b>Total</b>	0.00
	<b>273,931.19</b>

---

<b>Signature</b>	<b>Title</b>	<b>Date</b>
------------------	--------------	-------------

<b>City of Brooklyn Park Request for Council Consent Agenda</b>			
<b>Agenda Item:</b>	4.6	<b>Meeting Date:</b>	October 13, 2025
<b>Agenda Section:</b>	CONSENT	<b>Originating Department:</b>	Recreation and Parks
<b>Resolution:</b>	X	<b>Prepared By:</b>	Brad Tullberg, Recreation and Parks Director
<b>Ordinance:</b>	N/A		Marcus Culver, Operations & Maintenance Director
<b>Attachments:</b>	1	<b>Presented By:</b>	Brad Tullberg, Recreation & Parks Director
<b>Item:</b>	2026 Bonding Project Support for the Northwest Regional Athletic Facility Funding, Northwest Area Water Main Crossings and Northwest Area Water Tower		

**City Manager's Proposed Action:**

MOTION \_\_\_\_\_, SECOND \_\_\_\_\_, TO WAIVE THE READING AND ADOPT RESOLUTION #2024-\_\_\_\_ AUTHORIZING THE CITY MANAGER TO FILE AN UPDATED APPLICATION WITH THE MINNESOTA MANAGEMENT AND BUDGET OFFICE FOR 2026 STATE APPROPRIATIONS FUNDED FROM STATE GENERAL OBLIGATION BONDS.

**Overview:**

During the 2023 Minnesota Legislative session the City of Brooklyn Park was awarded a \$5M grant for the conversion of an ice arena into multi-court gymnasium space. In 2024, the language was amended to remove the conversion of an ice arena language and include the addition of a multi-court gymnasium. The cost and scope of the project have changed significantly, and staff applied to the Minnesota Management and Budget Office (MMB) for 2025 State Bonding, but most local projects were not awarded funding during the session.

MMB is accepting local government requests for state appropriations for capital improvement projects that the State Legislature will consider during the 2026 Legislative Session. All requests for appropriations funded by state general obligation bonds must be accompanied by a resolution of the governing body of the applicant.

The City of Brooklyn Park is seeking \$11 million in 2026 State of Minnesota bonding funds to design, construct, furnish, and equip the Northwest Regional Athletic Facility. This appropriation is in addition to the appropriation received in 2023 and includes money for improvements to entrances for improved facility access, exterior grounds improvements, and the addition of multicourt gymnasium space to serve as a regional multisport athletic and activities facility. The goal is to secure state bonding dollars for the Northwest Regional Athletic Facility, to create multi-court gymnasium space, improve the entrances and corridors, and create an outdoor community event space including a splash pad.

The City is also seeking \$4.5 million to install three 16-inch water main crossings in the northwest area of the City. Two of the lines would cross Highway 169 north of Trunk Highway 610 and one line would cross TH 610 just east of Jefferson Highway. These trunk water mains are required in order to develop the land west of Highway 169 and north of TH 610. This is an area that has been ripe for development for some time but has not been able to proceed due to lack of this critical infrastructure.

Additionally, the City is seeking \$10 million towards the construction of a water tower to serve existing and new development in the northwest area of the City. This 2 million gallon elevated water tank is necessary to expand the City's water storage capacity as well as provide sufficient water pressure as the Biotech Area and the area west of Highway 169 expands.

MMB is requesting these be placed in priority order based on the priorities of the City. Staff are recommending the Northwest Regional Athletic Facility be prioritized #1, Northwest Area Water Main Crossings be prioritized #2 and the Northwest Area Water Tower be prioritized #3.

**Primary Issues/Alternatives to Consider:** N/A

**Budgetary/Fiscal Issues:**

Staff is requesting approval authorizing the submission of requests for 2026 state appropriations funded from state general obligation bonds to assist in financing the Northwest Regional Athletic Facility, the Northwest Area Water Tower and the Northwest Area Water Main Crossings as a projects of regional and state significance. Staff are recommending the Northwest Regional Athletic Facility be prioritized #1, Northwest Area Water Main Crossings be prioritized #2 and the Northwest Area Water Tower be prioritized #3.

**Attachments:**

4.6A RESOLUTION

4.6B NORTHWEST AREA ATHLETIC FACILITY FACT SHEET

4.6C WATER INFRASTRUCTURE FACT SHEET

RESOLUTION #2026 -

AUTHORIZING THE CITY MANAGER TO FILE AN UPDATED APPLICATION WITH THE MINNESOTA MANAGEMENT AND BUDGET OFFICE FOR 2026 STATE APPROPRIATIONS FUNDED FROM STATE GENERAL OBLIGATION BONDS

WHEREAS, Minnesota Statutes section 16A.86 establishes the process by which local governments and political subdivisions may request state appropriations for capital improvement projects; and

WHEREAS, the Minnesota Management and Budget Office is accepting local government requests for state appropriations for capital improvement projects that the State Legislature will consider during the 2026 Legislative Session; and

WHEREAS, all requests for appropriations funded from state general obligation bonds must be accompanied by a resolution of the governing body of the applicant with the project priority number if submitting multiple requests; and

WHEREAS, local governments are encouraged to be selective in their requests and propose only the most important projects with clear regional or statewide significance; and

WHEREAS, the City of Brooklyn Park is seeking \$11 million in 2026 State of Minnesota bonding funds to design, construct, furnish, and equip the Northwest Regional Athletic Facility. This appropriation is in addition to the appropriation received in 2023 and includes money for improvements to entrances for improved facility access, exterior grounds improvements, and the addition of multicourt gymnasium space to serve as a regional multisport athletic and activities facility; and

WHEREAS, the City of Brooklyn Park has deemed; the number 1 priority being the Northwest Regional Athletic Facility; the number 2 priority being the Northwest Area Water Main Crossings; and the number 3 priority being the Northwest Area Water Tower; and

WHEREAS, the City of Brooklyn Park requires State bonding appropriations to provide financing to supplement City and other local funding to effectuate the design and construction of the aforementioned projects of regional and state significance.

NOW, THEREFORE BE IT RESOLVED, that the Brooklyn Park City Council assigns the project priority and project priority numbers to the following projects as follows:

1. Northwest Regional Athletic Facility
2. Northwest Area Water Main Crossings
3. Northwest Area Water Tower

NOW, THEREFORE BE IT FURTHER RESOLVED, that the Brooklyn Park City Council authorizes the submission of requests for 2026 state appropriations funded from state general obligation bonds to assist in financing the aforementioned projects of regional and state significance.

# Legislative Proposal 2025



*Promote community wellbeing with an enhanced Northwest Metro Regional Athletics Facility*

## The challenge

Since 1983, Brooklyn Park has been home to a regional northwest metro sports facility, attracting over 350,000 visitors annually.

However, with Brooklyn Park's population - especially among youth - growing sharply, demand for programs and space has soared. For over 20 years, the city has faced a shortage of gym space to support youth sports associations and adult recreation.

Positive, accessible recreation is a proven component of violence prevention and community wellbeing. At present, the facility's limited space and aging facilities fall short of fully meeting these needs. As Brooklyn Park strives to promote community safety, providing recreational outlets for young people is more critical than ever.



*The facility's current offerings, including two ice arenas, racquetball courts, a shared-use gymnasium (With the Minnesota National Guard), and banquet rooms, are aging and insufficient to meet community needs.*

## The proposal

The City of Brooklyn Park requests \$9.5 million to design, construct, furnish and equip the NW Metro Regional Athletics Facility, including the addition of a multi-court gymnasium, improved ADA-compliant entrances, expanded community event spaces, and upgraded parking.

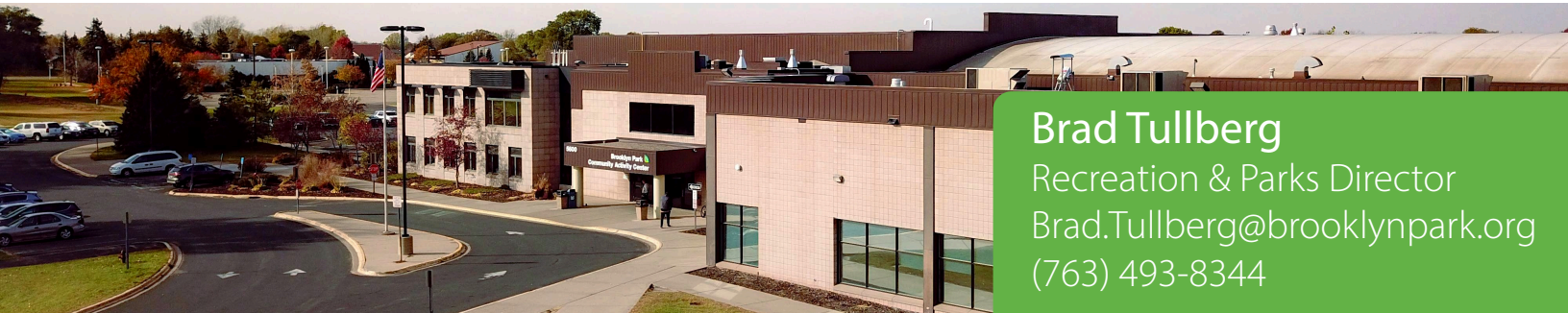
This project will support a dynamic regional multisport and cultural center, accommodating the community's diverse recreational and social needs.

## Why it matters

Expanding the existing facility will offer positive, healthy outlets for Brooklyn Park's young people and seniors alike, increasing access to offerings and reducing the need to travel outside the city for recreational opportunities.

The proposed renovations will provide much-needed gym space for youth athletics and increase access to recreational sports for all ages.

Additionally, enhanced exterior spaces will create a venue capable of hosting large cultural events, fostering connections within Brooklyn Park's rich, diverse community.



**Brad Tullberg**

Recreation & Parks Director

[Brad.Tullberg@brooklynpark.org](mailto:Brad.Tullberg@brooklynpark.org)

(763) 493-8344



*Enhanced entryway*

# Brooklyn Park grows champions.

The Northwest Metro Regional Athletics Facility will feature an attractive entryway designed to maximize safety for all. New multi-use courts will support pickleball, basketball, and more, including ample space for congregating, meetings, and large-scale events.



*Multi-use court space*



*Large event space*



*Exterior*

# Legislative Proposal 2025

*Bringing water infrastructure to the Northwest Area*

**Brooklyn  
Park**

## The challenge

Brooklyn Park's northwest area is a high-demand area consisting of 700 acres of land, with transportation access to Highway 169 and Trunk Highway 610. The anticipated development of a BioTech district in the area is expected to bring 10,000 new jobs and 3,000 housing units, a key strategy in addressing historic and current racial disparities in the city.

However, Brooklyn Park's water distribution system cannot meet the area's anticipated capacity and water pressure needs. With the barriers of both Hwy 169 and Hwy 610, extending water into this area adds significant cost to already high costs to provide this vital utility.

## The proposal



**Water main crossings**  
\$4.5 million

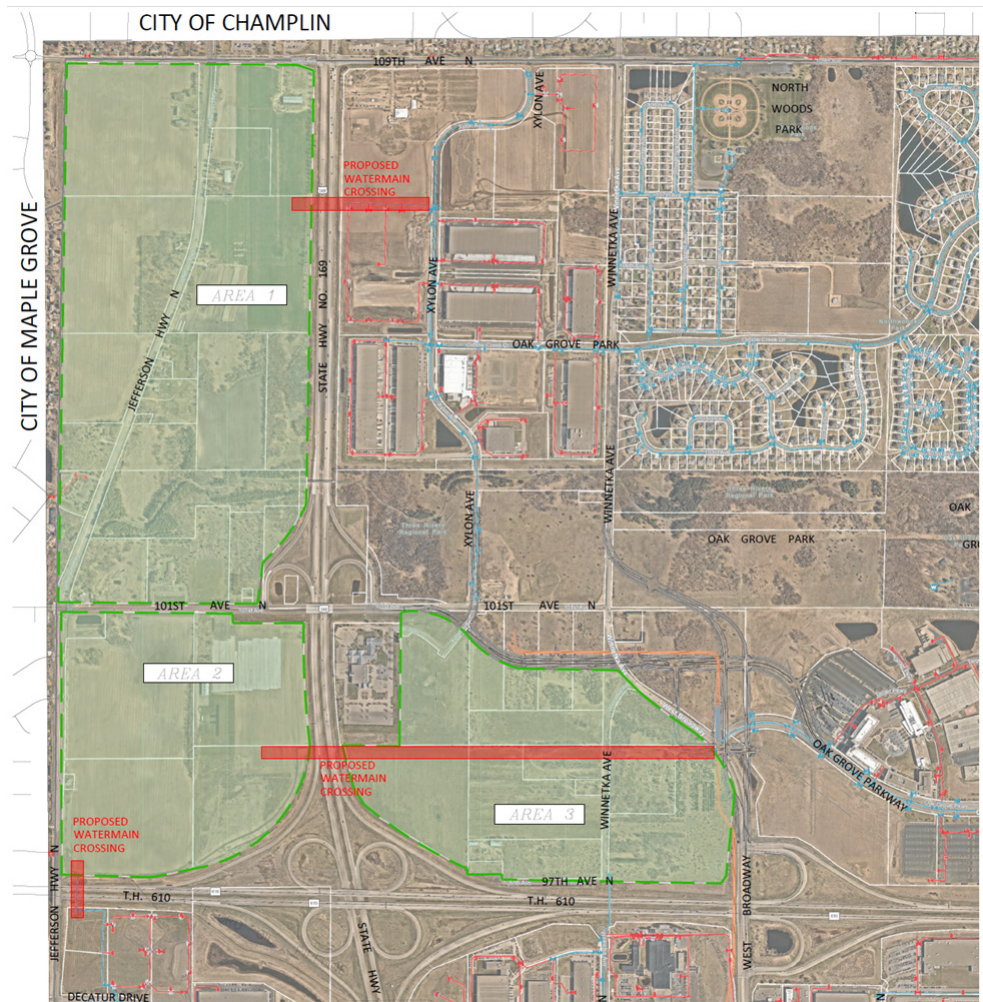
The City is proposing to install three 16-inch water main crossings in the northwest area. Two of the lines would cross Highway 169 north of TH 610 and one line would cross TH 610 just east of Jefferson Highway.

Providing all three crossings is vital to the ultimate need to loop the watermain system to provide redundancy and sufficient water pressure.



**Water tower**  
\$10 million

Additionally, the City must construct a two-million-gallon elevated water tank (water tower) in the area of Highway 169 and 101st Ave.



## Why it matters

The combination of this vital water infrastructure will provide the necessary infrastructure to open up the northwest area to development and help the City grow its tax base, improve the regional economy, and keep Brooklyn Park a top choice for residents for years to come.



**Marc Culver, City Engineer**

Marc.Culver@brooklynpark.org | (763) 493-8114