

Wednesday, August 21, 2024
Recreation & Parks Advisory Commission
Minutes

- 1. CALL TO ORDER/ROLL CALL - The Recreation & Parks Advisory Commission meeting was held at Mississippi Gateway Regional Park and was called to order by Chairperson Erickson at 6:00 PM**

Commission Members present:

Dwain Erickson, Chairperson
Latrina Caldwell, At-large
Doug Crandall, At-large
Mercy Matthews, West
Taylor Murray, East
Terry Parks, At-large
Kellina Quigley, At-large
Joshua Uloth, West

Klarissa Yu, Youth Liaison

Absent:

Deborah Lande, Central - Resigned
Vice-chair Judy Purcell
Miriam Osammor, East

Councilmember McGarvey

Aria Reickard, Youth Liaison

Brooklyn Park Staff present:

Brad Tullberg, Director of Recreation and Parks
Marcus Hill, Parks and Facilities Manager
Greg Hoag, Parks and Buildings Maintenance Manager
Jeanine Machan, Administrative Assistant

- 2. OPEN FORUM-PUBLIC COMMENT AND RESPONSE**

N/A

- 3. APPROVAL OF AGENDA**

**A Motion was made to Approve the August 21, 2024 amended agenda by Commissioner Uloth and second by Commissioner Parks.
Motion unanimously approved.**

- 4. APPROVAL OF MINUTES**

**A Motion was made to Approve the July 17, 2024 minutes by Commissioner Parks and second by Commissioner Crandall.
Motion unanimously approved.**

- 5. ACTION ITEMS**

NA

- 6. GENERAL INFORMATION - PRESENTATIONS**

6.1 MISSISSIPPI GATEWAY REGIONAL PARK PROJECT UPDATE

Matt Swenson from Three Rivers Park District provided a handout and guided a tour of the project.
Handout is attached.

- 7. OLD BUSINESS**

7.1 4.6 DEER HUNT ADDITION CC 7/22/2024

8. WRITTEN REPORTS

1. PROGRAM AND EVENTS UPDATE
2. PARK PROJECTS UPDATE
3. DIRECTORS REPORT

9. DISCUSSION ITEMS

10. VERBAL REPORTS AND ANNOUNCEMENTS

1. CITY COUNCIL UPDATE – Councilmember McGarvey
No Report
2. CITY HALL ENHANCEMENT TASK FORCE Commissioners Erickson and Matthews
No Report
3. COMMUNITY GOALS STEERING COMMITTEE UPDATE Commissioner Parks
No Report
4. KEY TOPICS FOR DISCUSSION AT THE NEXT RPAC MEETING
 - SEPTEMBER – BUDGET
 -
5. KEY DATES FOR FUTURE MEETINGS/EVENTS

11. ADJOURNMENT

A Motion was made by Commissioner Uloth to close the meeting, second by Commissioner Murray. Motion unanimously approved.

Adjourned by Chairperson Erickson at 7:30 PM

Submitted respectfully,
Jeanine Machan
Secretary

Attachments:

Mississippi Gateway Regional Park Master Plan



Three Rivers

PARK DISTRICT

Brooklyn Park 

Unique. United. Undiscovered.



Mississippi Gateway Regional Park master plan

September 20, 2018

The **mission** of Three Rivers Park District is to **promote environmental stewardship through recreation and education** in a natural resources-based park system.

Three Rivers Park District was established in 1957 after legislation was enacted in 1955 allowing for the activation of park districts whose primary duties are “acquisition, development and maintenance of large parks, wildlife sanctuaries, forest and other reservations, and means for public access to historic sites and to lakes, rivers and streams and to other natural phenomena” (Minnesota State Statutes, Chapter 398.07).

There are more than 10 million annual visits to more than 26,500 acres of park reserves, regional parks and special-use areas in Hennepin and five adjoining counties and 140 miles of regional trails. Current outdoor-recreation activities in regional parks and trails include camping, hiking, cross-country and downhill skiing, tubing, bicycling, in-line skating, horseback riding, nature interpretation, golfing, fishing and swimming. Three Rivers Park District also operates a natural resources management program, which administers the restoration and perpetuation of both native wildlife and plants in order to provide park and trail visitors opportunities for high-quality recreational experiences.

Board of Commissioners

DISTRICT 1

Penny Steele, Term Expires 12/31/20

Corcoran, Greenfield, Hanover, Independence, Long Lake, Loretto, Maple Plain, Medicine Lake, Medina, Minnetrista, Minnetonka Beach, Mound, New Hope, Orono (precincts 1, 3 & 4), Plymouth, Rockford, Rogers, Spring Park, St. Bonifacius, Wayzata

DISTRICT 2

Jennifer DeJournett, Term Expires 12/31/18

Brooklyn Park (all precincts except W1-0 and W1-R), Champlin, Dayton, Maple Grove, Osseo

DISTRICT 3

Daniel Freeman, Term Expires 12/31/20

Brooklyn Center, Brooklyn Park (only precincts W1-0 and W1-R), Crystal, Golden Valley, Hopkins (precinct 2), Robbinsdale, St. Anthony, St. Louis Park

DISTRICT 4

John Gunyou, Term Expires 12/31/18

Deephaven, Edina, Excelsior, Greenwood, Hopkins (all precincts except 2), Minnetonka, Orono (precinct 2), Richfield (all precincts except 6 & 9), Shorewood, Tonka Bay, Woodland

DISTRICT 5

John Gibbs, Term Expires 12/31/20

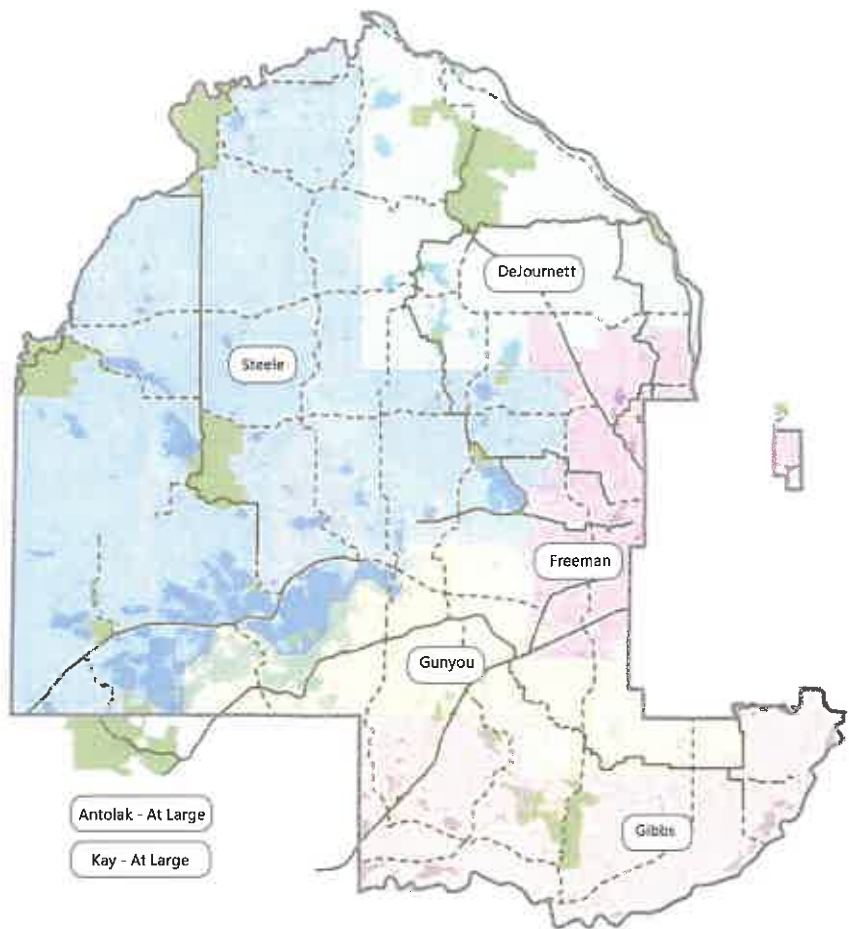
Bloomington, Chanhassen, Eden Prairie, Fort Snelling, Richfield (precincts 6 & 9)

Steven Antolak, Term Expires 12/31/20

Hennepin County Appointee - serves at large

Gene Kay, Term Expires 12/31/18

Hennepin County Appointee - serves at large



Cover Photo

Mississippi Gateway Regional Park education programming.

Photo Credit: Three Rivers Park District



ACKNOWLEDGEMENTS RECOGNIZING CONTRIBUTORS

Three Rivers Park District (Three Rivers) gratefully acknowledges the staff, elected officials, community members and other participants who contributed to the Mississippi Gateway Regional Park Master Plan. The Park District extends a special thank you to the individuals listed below who provided guidance, time, questions, and critical insight throughout the process.

External Agency Team

Karen Blaska, PLA
Anoka County

Dan Patterson
Hennepin County

Susan Overson, PLA
National Park Service

Alan Robbins-Fenger
National Park Service

Jan Youngquist, AICP
Metropolitan Council (former staff)

Michael Peterka
Metropolitan Council (former staff)

Raintry Salk
Metropolitan Council

Charlie Lehn
City of Champlin

Doug Snyder
Mississippi Watershed Mgmt. Org.

Kristin Fritschel
Champlin Brooklyn Park Academy

Alicia Uzarek
Friends of the Mississippi River

Maya Christensen
Friends of the Mississippi River

Brooklyn Park

Jody Yungers
Recreation & Parks Director

Josie Shardlow
Community Engagement Coordinator

Brad Tullberg
Parks & Facilities Manager

Greg Hoag
Park and Building Maintenance Manager

WSB & Associates (Consultant)

Jason Amberg, PLA
Principal

Jeff Feulner
Senior Landscape Architect

Samantha McKinney
Landscape Architect Designer

Breanne Rothstein
Planner

Rose Ryan (while employed at WSB)
Planner

Three Rivers Park District

Jennifer DeJournett
Board Member, Master Plan Liaison

Steve Antolak
Board Member, Master Plan Liaison

Boe R. Carlson
Superintendent & Secretary to Board

Thomas K. McDowell (Retired)
Associate Superintendent
Division of Recreation & Natural Resources

Jonathan Vlaming
Associate Superintendent
Division of Planning, Design & Technology

Kelly Grissman
Director of Planning

Denis Hahn
Director of Outdoor Education (retired)

John Moriarty
Senior Manager of Wildlife

Ann Rexine
Principal Planner

Stephen Shurson, PLA
Landscape Architect

Patty Maher
Outdoor Education Supervisor

Heather Kuikka
Planning Administrative Specialist



This page left intentionally blank

Recreation Development

The main recreation development area of the East Unit will be a highly developed and vibrant space centered around the new Mississippi Gateway Center. This area will include picnicking, Nature's Highline and Tree House (an elevated tree canopy walk), nature-based play area, a mini-Mississippi River play and education feature and areas to gather and socialize adjacent to the new building.

The River Flats Area (located in the East Unit, along river's edge) will offer improved picnicking, a non-motorized boat launch, fishing improvements and ADA access directly to the Mississippi River shoreline. The main recreation of the West Unit will include reservation picnicking, nature-based dog off-leash area and archery.

Beyond these spaces, the park becomes less and less developed. Field learning stations and nature interpretation nodes located throughout the park will provide designated spaces to interpret and experience nature first hand. The field learning stations will be designed to accommodate group education with teaching shelters and storage space and the nature interpretation nodes will likely be lighter touches on the landscape that can accommodate instructor led, group education as well as individual, self-guided experiences.

A new education classroom is planned for the most southerly area of the park providing opportunities to learn about nature in nature. This space will also serve as a warming hut in the winter season.

A trail system comprised of both paved and non-paved trails, new bathroom facilities and enhanced wayfinding will allow improved access and service throughout the park. A new beginner cross-country ski loop, area for snow-shoeing and maintained paved trail loop will support winter park use.

Education Programming

Mississippi Gateway Regional Park is planned to be one of the core education programming centers at Three Rivers. Programming will be offered multiple times a day including evenings and weekends to meet the community's needs. Instructor led programming will include teaching outdoor recreation such as cross-country skiing, fishing, kayaking, rafting and more as well as nature-based education focused on the Mississippi River and its dynamic ecosystem. Programming will also be offered off-site to better serve the needs of the greater community.

Natural Resource Plan

As Three Rivers' main park on the Mississippi River, this park is planned to receive a higher level of natural resource restoration than typically provided in regional parks. When complete, the park will be comprised of floodplain forest, prairie, oak savannah and wetland. Natural resource management including invasive species removal and controlled burns will be ongoing.



Mississippi Gateway Regional Park is envisioned as a stepping stone into nature. The intent is that the park will connect people to nature in a manner that they are comfortable ultimately transforming novice park visitors into environmental stewards. Source: Three Rivers Park District

VISITATION

Annual visitation is projected to reach 600,000 when fully developed. Park visitor make up is anticipated to be similar to the demographics of the area within a 15-minute drive time of the park, as well as Suburban Hennepin County.

OPERATIONS & MAINTENANCE

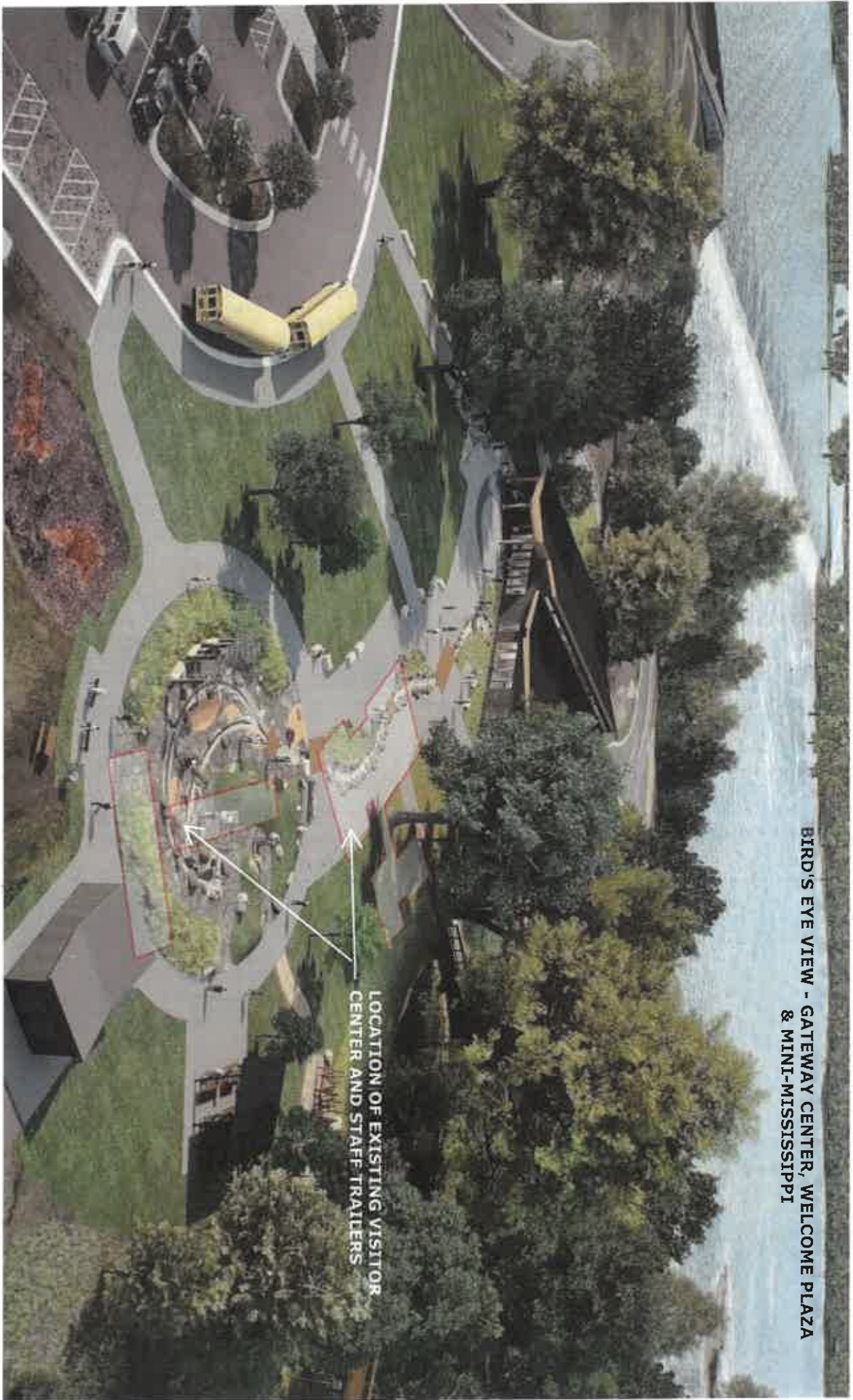
The master plan calls for the park to be operated and maintained as one cohesive park unit and consistent with the greater Three Rivers Park System. The annual operation and maintenance cost when fully complete is \$1.8 Million.

IMPLEMENTATION

Three Rivers and Brooklyn Park intend to work together to secure funding for this park through their respective capital improvement programs, grants, fundraising and partnerships.

Implementation will ultimately occur as funds are secured and at the discretion of Three Rivers Board of Commissioners and Brooklyn Park City Council. The total estimated cost for capital improvements including natural resource restoration and recreation development projects is \$25.5 Million.

**BIRD'S EYE VIEW - GATEWAY CENTER, WELCOME PLAZA
& MINI-MISSISSIPPI**



**LOCATION OF EXISTING VISITOR
CENTER AND STAFF TRAILERS**



GATEWAY CENTER - MAIN ENTRANCE



GATEWAY CENTER - RECEPTION



GATEWAY CENTER - EXHIBIT SPACE



GATEWAY CENTER - EXHIBIT SPACE

GATEWAY CENTER - REAR ELEVATION



GATEWAY CENTER - COMBINED CLASSROOMS



GATEWAY CENTER - SINGLE CLASSROOM



GATEWAY CENTER - LOWER LEVEL LOBBY/EQUIPMENT RENTAL





BIRD'S EYE VIEW - TREETOP TRAIL & NATURE PLAY

TREETOP TRAIL & NATURE PLAY



WEST UNIT SITE PLAN





LARGE RESERVABLE SHELTER



TRADITIONAL PLAY AREA

