

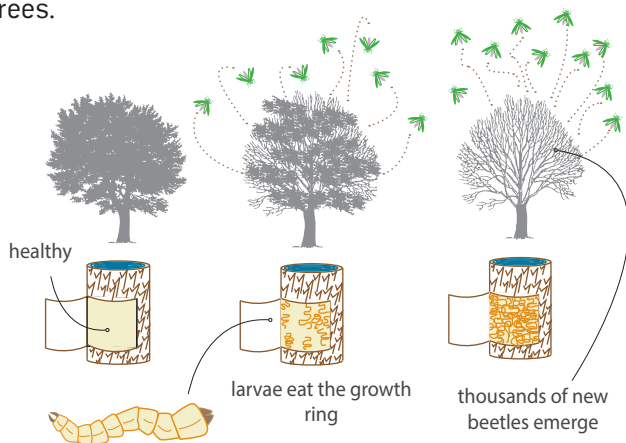


What is Emerald Ash Borer?

The Emerald Ash Borer (EAB) is an invasive beetle from Asia. It was first discovered in the United States during the summer of 2002 near Detroit, Michigan. EAB has quickly become one of the most destructive and costly forest insects in urban forest history.

EAB larvae feed on the inner bark of ash trees which disrupts the tree's ability to transport water and nutrients. Once an ash tree is infested, it has almost zero chance of survival. The only way to protect your tree is with treatment.

EAB populations can grow exponentially each year because the beetle has few natural predators and our ash trees have limited natural defenses. When EAB is not managed, annual ash tree deaths can quickly overwhelm the resources required to remove dead and dying trees.



A healthy ash tree will transport water through the current year's growth ring. The larvae of the beetles eat the growth rings under the bark. A heavily infested tree can no longer transport water and the top dies. The beetles will move on to the next ash tree.

Is EAB in My City?

EAB was confirmed in Brooklyn Park in August, 2017. Like most Minnesota cities, Brooklyn Park has an abundance of ash trees growing on public and private property. A 2010 DNR survey found more than 45,000 ash trees in Brooklyn Park. It is estimated that over 30 percent of trees in the Twin Cities area are ash trees.



What are My Choices if I have an Ash Tree?

If you have an ash tree, now is the time to decide what to do. Ash trees can be protected or removed. Brooklyn Park is encouraging residents to treat large, well-placed, healthy private ash trees as part of an EAB treatment program.

Considerations for Treatment:

- Tree size greater than 10" in diameter.
- Tree is not competing with other trees or infrastructure.
- Tree shows no more than 30% of canopy decline if infestation is suspected.

Treating an ash tree is more cost effective than removal and replacement, plus maintains the tree benefits and value of a mature tree to your property!



Protecting your ash tree for 20 years is less than the average cost to remove and replace it.



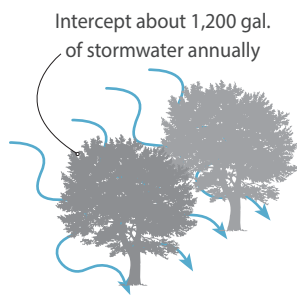
EAB larvae damage on ash tree.

Contact Rainbow Treecare to take advantage of Brooklyn Park's resident discount

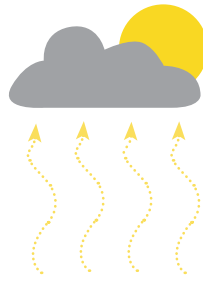
952-767-6920 | info@rainbowtreecare.com | www.rainbowtreecare.com/Brooklyn-Park

What are the Benefits of my Ash Tree?

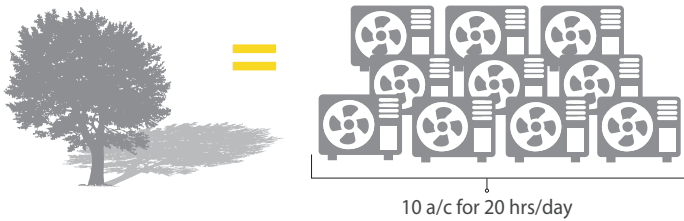
The environmental and economic value of trees is well documented. Mature ash trees provide a significant amount of valuable tree canopy in our community. For example, an average ash tree in Brooklyn Park will:



» **Reduce** storm flooding & keep **pollution** from rivers and lakes.



» **Reduce CO2** in the atmosphere by **600 lbs+** every year.



» **Produce** the cooling effect of **ten** room-size air conditioners operating **twenty** hours a day.



Ash trees are valuable within the community



The value of property can drop along with the beauty of the neighborhood when ash trees are lost.

What are the Advantages of Brooklyn Park's Program?

- The city has ensured that Rainbow Treecare meets the high standards required for a contractor.
- Rainbow Treecare has fulfilled the city's requirements on staff training, years of experience, and number of licensed applicators on staff.
- You can sign-up for an inspection with Rainbow Treecare any time of year.
- You will receive a property visit and consultation with an ISA certified arborist or a certified tree inspector.
- Ash tree protection is offered at a discounted rate as part of this city partnership.
- Our entire community benefits from the mature canopy



Treated

Untreated

To learn more about Brooklyn Park's Emerald Ash Borer Management Program, visit

<https://www.brooklynpark.org/emerald-ash-borer/>



Contact Rainbow Treecare to take advantage of Brooklyn Park's resident discount

952-767-6920 | info@rainbowtreecare.com | www.rainbowtreecare.com/Brooklyn-Park